



Making a Daily Difference

City of Norman

Transfer Station

3901 Chautauqua Ave. Norman, Oklahoma 73072

Attention: Stacey Baker

February 21, 2019

6101 W. Reno Ave. STE 200

Oklahoma City, OK. 73127

Matthew Huskins

M: 405-404-7970

matthew.huskins@convergent.com

Quotation: MH05174210P

RFP#:

License/Cert 1750

Reference: ACS and Camera Add

**This proposal and pricing is being provided under SW1048C State Contract
Terms and Conditions per SW1048C**

SCOPE OF WORK

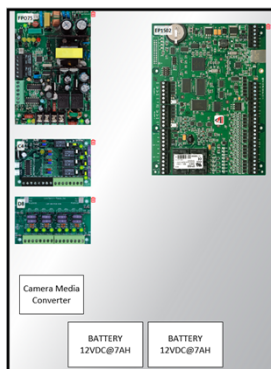
Installation of access control and CCTV at the Transfer Station 3901 Chautauqua Ave. Norman.

ACCESS CONTROL SYSTEM (ACS)

Convergent will install the hardware listed in the B.O.M to add readers to the new gate controller and to the store front entry door on the weight station office. See diagrams below.

HEAD-END

A Life Safety Power enclosure (E2M) will be wall mounted in the network room. The panel will have a SY-EP1502 installed for the readers. The camera I.P. over Copper base unit will also be installed in this enclosure for the Gate camera, this unit is required for the distance from the gate to the head-end exceeds 100m (300').



DOOR HARDWARE

GATE

A HySecurity Slide driver gate operator will be installed and the existing slide gate. Gate will be on a time code to open and close at a customer determined time, after hours. The following will be installed on the gate;

- Gate Controller
 - New Concrete Pad
 - Three (3) Sawcut Vehicle Detection Loops
 - Yelp SOS box
 - Conduit from weight station facility to gate location for Gate power and ACS. See diagram below.



FRONT OFFICE DOOR

The following hardware will be installed weight station building's store front door.

- Reader w/ Keypad
- Strike lock
- Deadlatch with push paddle and keyway
- RtE PIR
- Door Contact.

CCTV

Convergent will install Three (3) new I.P. cameras and program into Genetec.

CAMERAS

The following cameras will be installed in the locations indicated below.

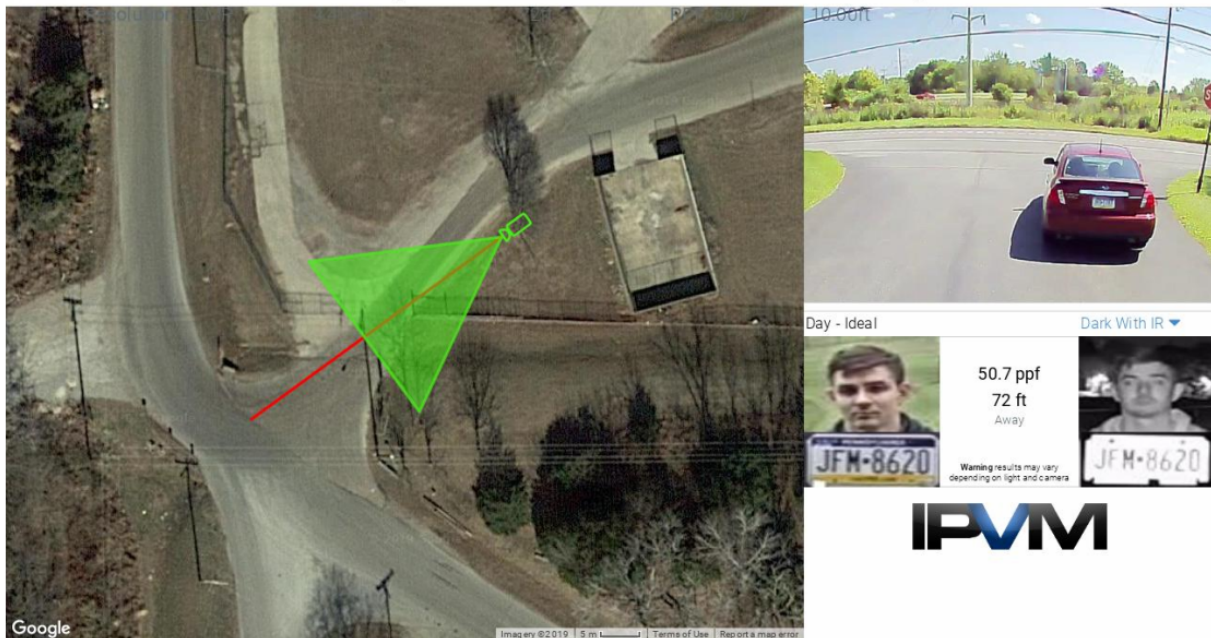


GATE

A new 12' 4" sq pole will be installed on the secure side of the gate approximately 50' back from the gate along the side of the road.

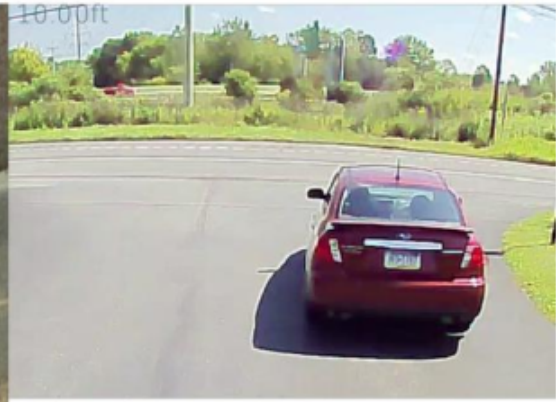
A PNM-9080R 4K IR camera will be mounted to a pole mounted SPB-300NB back box. The back box will house the I.P. over copper transmitter.

This camera will provide a view of the gate and area around gate, including reader pedestal area.



ENTRY SCALE

A PNV-9080R 4K camera will be wall mounted, see picture below. Camera will be wall mounted to facility. The weight of the view will be the scale area with secondary of drive up to scale and area past scale.



Day - Ideal

Dark With IR

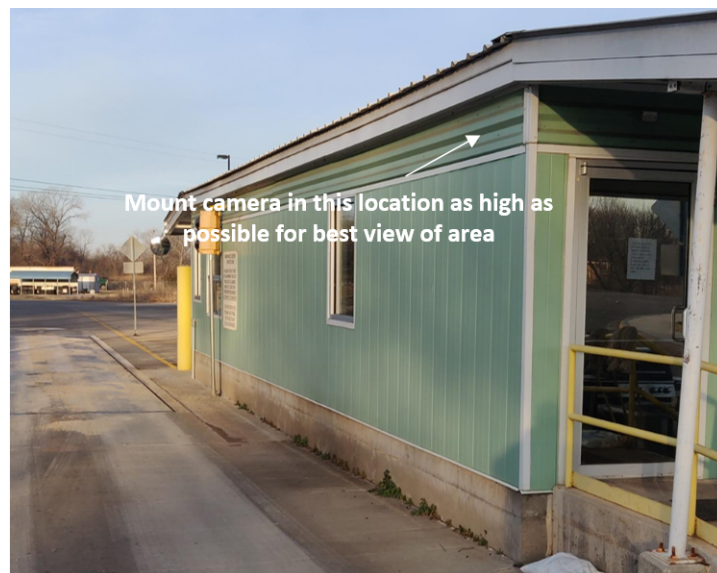


40.3 ppf
118 ft
Away

Warning results may vary
depending on light and
camera



IPVM



ENTRY AREA CAMERA

An XNV-6011 2MP dome camera will be ceiling mounted in the area indicated in diagram below. Camera will view individuals standing at the door and as much of the area around the door and ramp.



All cameras will be programmed into Genetec by Convergent. Tech will coordinate with customer on recording, and camera naming.

CABLE

Cables to gate will be the following types;

- CAT6 OSP with water block
 - For camera transmission
- Composite OSP with water block
 - 18/2 for gate controller
 - 22/6 OAS for reader

Building CAT6 will be plenum rated. All cable will be labeled with self-laminated machine printed labels rated for the environment.

NETWORK

City of Norman will provide the following network connections and I.P. addresses;

1. Gate Camera
2. Entry Camera – PoE port
3. Scale Camera – PoE port
4. SY-EP1502 Controller

MATERIALS

This proposal and pricing is being provided under SW1048C State Contract

Line	Qty	Part	Description	Unit Price	Extended Price
1	System ID: GSC-140117-585004				
2	--SOFTWARE				
3	1.00	GSC-OM-E-1C	GSC CAMERA LICENSING	\$ 240.03	\$ 240.03
4	1.00	ADV-CAM-E-1M	Genetec™ Advantage for 1 Omnicast Enterprise Camera – 1 month	\$ 3.69	\$ 3.69
5	1.00	ADV-RDR-E-1M	Genetec™ Advantage for 1 Synergis Enterprise Reader – 1 month	\$ 1.16	\$ 1.16
6	--HEAD-END HARDWARE				
7	1.00	FPO75-C4D8E2M	Power supply board 75W, 6A/12V or 3A/24V 4 relay lock control outputs fused at 3A per output 8 auxiliary DC outputs fused at 3A per output Enclosure, Size 18. (16W x 20H x 4.5D) with Mercury/Lenel backplate	\$ 352.70	\$ 352.70
8	1.00	Sy-EP1502	Mercury Intelligent Controller, 16MB RAM Ethernet 8In/4Out/2Rd (Software Connections included)	\$ 1,264.86	\$ 1,264.86
9	2.00	BT126	12V/7.0AH BATTERY	\$ 22.70	\$ 45.41
10	1.00	5140.12	POWER CORD, SJTW BLACK JACKET, 10FT LONG, 5-15P TO ROJ	\$ 16.96	\$ 16.96
11	1.00	TC-SUP7TEL15	SUPER7TEL15 7 OUTL 15'CORD	\$ 52.69	\$ 52.69
12	1.00	MISC-CONDUIT	MISCELLANEOUS MATERIALS / CONDUIT	\$ 33.78	\$ 33.78
13	--ACS HARDWARE				
14	GATE				
15	1.00	921PTNNEKO0000	MultiCLASS SE RPK40	\$ 304.49	\$ 304.49
16	1.00	PM-369C	36" PEDSTL,PAD MNT,STL,BLK	\$ 144.58	\$ 144.58
17	1.00	STUD-ANCHOR-625	Stud Anchor Kit (for existing construction)	\$ 74.32	\$ 74.32
18	1.00	VK-VE5X5PNL	VE5X5 W/PANEL INFRONT	\$ 122.96	\$ 122.96
19	1.00	3T-ASRB1	2 AMP UL LISTED RELAY BOARD	\$ 13.50	\$ 13.50
20	1.00	MISC-CONDUIT	MISCELLANEOUS MATERIALS / CONDUIT	\$ 33.78	\$ 33.78
21	FRONT DOOR				
22	1.00	921PTNNEKO0000	MultiCLASS SE RPK40	\$ 304.49	\$ 304.49
23	1.00	R8-451036262	DEAD LATCH 1 1/8 BACKSET RH	\$ 62.15	\$ 62.15
24	1.00	R8-459040062	PADDLE OPERATOR PUSH TO RIGHT	\$ 78.36	\$ 78.36
25	1.00	OL-7400335	ELECTRIC STRIKE, 12/24 AC/DC,	\$ 156.74	\$ 156.74
26	1.00	DS160	REQUEST TO EXIT PIR	\$ 66.59	\$ 66.59

Line	Qty	Part	Description	Unit Price	Extended Price
27	1.00	1078C-N	CONTACT RECESSED STEEL DOOR	\$ 7.59	\$ 7.59
28	--CCTV				
29	GATE				
30	1.00	SP-12	4-INCH SQUARE POLE 12-FT HEIGHT, ALUMINUM, ANODIZED BRONZE, CAP, HAND HOLE 18-INCHES ABOVE BASE.	\$ 708.11	\$ 708.11
31	1.00	STRONGFOR M-18-5	STRONG POLE FORM	\$ 202.70	\$ 202.70
32	1.00	STRONGFOR M-18-5-D	18" x 5' STRONG POLE FORM	\$ 52.70	\$ 52.70
33	1.00	PNV-9080R	Network Camera, Vandal Resistant, IR Dome, Day/Night, H.265/H.264/MJPEG, 4000 x 3000 Resolution, F1.6 Varifocal/P-Iris 4.5 to 10 MM Lens, 128 GB, 24 VAC/12 VDC, PoE	\$ 985.80	\$ 985.80
34	1.00	SBP-300HM6	MEDIUM CAP ADAPTER (ALUMINUM)	\$ 28.43	\$ 28.43
35	1.00	SBP-300WM1	ACCESSORY, WALL MOUNT - IVORY	\$ 45.84	\$ 45.84
36	1.00	SBP-300NB	INSTALL BACK BOX FOR	\$ 179.11	\$ 179.11
37	1.00	CLFE1EOC	1-CH EXTENDER REMOTE UNIT	\$ 251.59	\$ 251.59
38	1.00	CLRFE1EOCP/M	MINI COPPERLINE 1 CH ETHERNET	\$ 251.59	\$ 251.59
39	1.00	CNGE1IPS	Industrial Gigabit Power over Ethernet Midspan Injector, 10/100/1000T(X), Compatible with IEEE802.3at	\$ 181.72	\$ 181.72
40	2.00	576-115-001	CAT6 BOOTED PATCH CORD 1FT - YELLOW	\$ 1.20	\$ 2.41
41	2.00	MISC-CONDUIT	MISCELLANEOUS MATERIALS / CONDUIT	\$ 33.78	\$ 67.57
42	ENTRY SCALE				
43	1.00	PNV-9080R	Network Camera, Vandal Resistant, IR Dome, Day/Night, H.265/H.264/MJPEG, 4000 x 3000 Resolution, F1.6 Varifocal/P-Iris 4.5 to 10 MM Lens, 128 GB, 24 VAC/12 VDC, PoE	\$ 985.80	\$ 985.80
44	1.00	SBP-300HM6	MEDIUM CAP ADAPTER (ALUMINUM)	\$ 28.43	\$ 28.43
45	1.00	SBP-300WM1	ACCESSORY, WALL MOUNT - IVORY	\$ 45.84	\$ 45.84
46	ENTRY AREA				
47	1.00	XNV-6011	WISENET X IP OUT VANDAL, 2MP	\$ 238.22	\$ 238.22
48	--CABLE				
49	1.00	775600-110DB	CATAGORY 6 CABLE, WATER BLOCK, NOT DIRECT BURY,	\$ 262.16	\$ 262.16
50	1.00	4461111WBT	4 Element Composite Cable Non-Plenum Black-Jacket	\$ 1,058.11	\$ 1,058.11
51	1.00	MISC-CONDUIT	MISCELLANEOUS MATERIALS / CONDUIT	\$ 33.78	\$ 33.78
52	4.00	OR-KSSMB2	SMB, KEYSTONE, 2 PORT	\$ 2.96	\$ 11.84
53	8.00	OR-KS6A-44	TECH CHOICE KEYSTONE JACK CAT6 YELLOW	\$ 7.16	\$ 57.30
54	4.00	R5-C6PCYW7	7' CAT6 PATCH CORD YELLOW	\$ 3.04	\$ 12.16

Equipment Total	\$ 9,072.04
Total Labor/Other Costs	\$ 68,041.11
Subcontractor	\$ 60,945.95
Freight	\$ 100.00
Warranty	\$ 273.00
Total Project Price	\$ 77,486.15

Clarifications and Exclusion

1. All work proposed herein, shall be performed during normal business hours Monday through Friday 8:00 am - 5:00 pm.
2. Lift pricing is included.
3. Low voltage wiring shall be installed via open air code approved methods.
4. Provision or installation of conduit, wire, boxes, fittings or other electrical installation materials unless specifically listed under Inclusions or Bill of Materials.
5. Permits or associated fees are not included.
6. Customer to provide static IP addresses and network connections.
7. Customer to provide a secured staging & storage area for project related materials.
8. Pricing assumes that electronic Auto CAD files are available from customer for our use in creating submittal drawings.