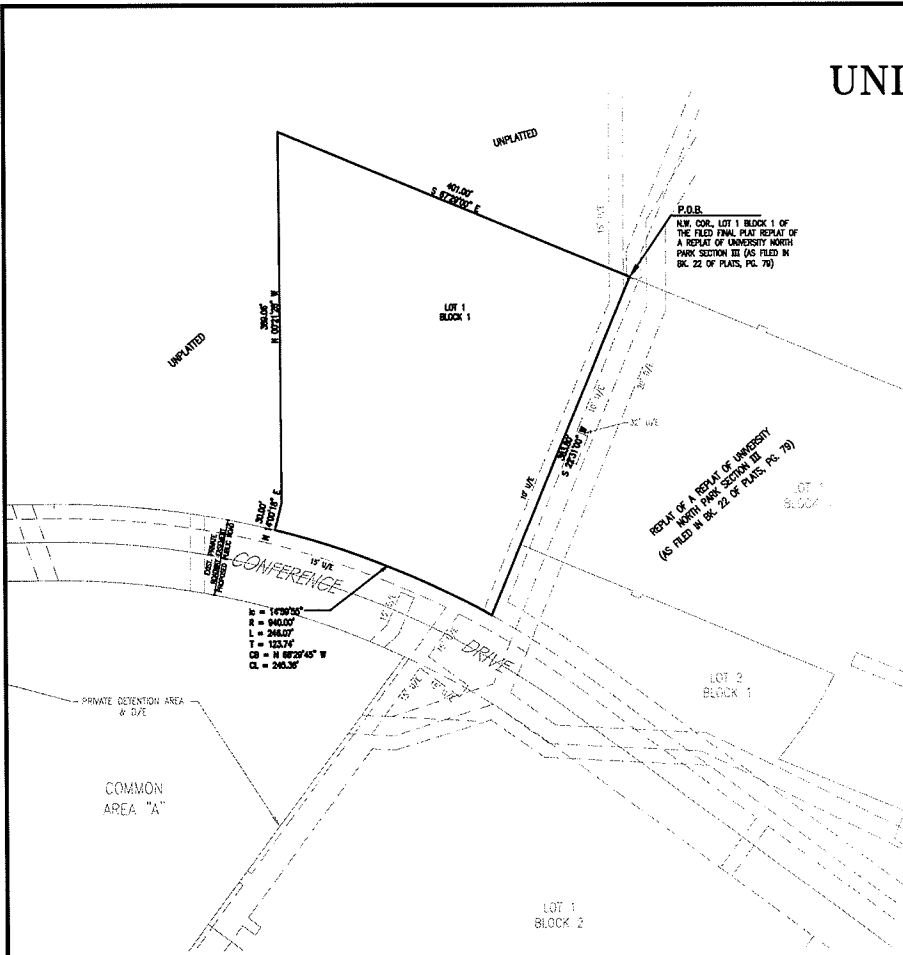


# FINAL PLAT UNIVERSITY NORTH PARK SECTION X

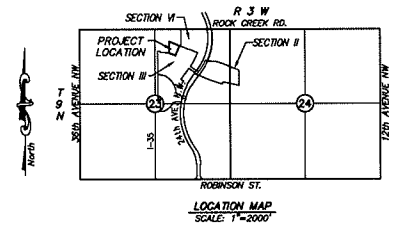
A PLANNED UNIT DEVELOPMENT  
BEING A PART OF THE N.E. ¼ OF SECTION 23, T 9 N, R 3 W, INDIAN MERIDIAN  
NORMAN, CLEVELAND COUNTY, OKLAHOMA



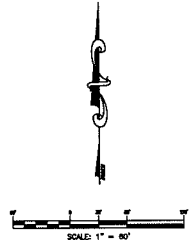
**P.O.B.**  
N.W. COR., LOT 1 BLOCK 1 OF  
THE FILED FINAL PLAT REPEAT OF  
A REPEAT OF UNIVERSITY NORTH  
PARK SECTION III (AS FILED IN  
BK. 22 OF PLATS, PG. 79)

REPEAT OF A REPEAT OF UNIVERSITY  
NORTH PARK SECTION III  
(AS FILED IN BK. 22 OF PLATS, PG. 79)

H = 14792.75'  
R = 840.07'  
L = 246.07'  
T = 123.34'  
CB = N 89°28'45" W  
CL = 246.35'



- NOTES:**
1. THIS PLAT MEETS THE OKLAHOMA MINIMUM STANDARDS FOR THE PRACTICE OF LAND SURVEYING AS ADOPTED BY THE OKLAHOMA STATE BOARD OF REGISTRATION FOR PROFESSIONAL ENGINEERS AND LAND SURVEYORS.
  2. THE BEARING OF SOUTH 89°28'45" WEST ON THE SOUTH LINE OF THE SOUTHWEST QUARTER OF SECTION 23 (EASTERLY LINE OF ROBINSON STREET) WAS USED AS THE BASIS OF BEARING FOR THIS SURVEY.
  3. EXCEPT AS SHOWN OTHERWISE ALL EASEMENTS SHALL BE CENTERED ON LOT LINES.
  4. RESTRICTIVE COVENANTS AND CONDITIONS SHALL AFFECT ALL LOTS.
  5. EASEMENTS SHOWN HEREON BY SPECIFIC RECORDING INFORMATION ARE SHOWN FOR REFERENCE PURPOSES ONLY AND ARE NOT DEDICATED PURSUANT TO THIS FINAL PLAT.
  6. THE UNIT OF MEASUREMENT SHOWN FOR ALL DIMENSIONS ON THE FINAL PLAT IS FEET.



BENCH MARK  
BRASS CAP AT  
ELEV. =

D/E = DRAINAGE EASEMENT  
P/D/E = PEDESTRIAN EASEMENT  
LNA = LIMITS OF NO ACCESS  
U/E = UTILITY EASEMENT  
B/L = BUILDING LINE  
-1000- = ADDRESS

TOTAL LOTS = 1

ENGINEER OF RECORD  
**SMC Consulting Engineers, P.C.**  
815 WEST MAIN STREET - OKLAHOMA CITY, OKLAHOMA 73106  
PHONE (405) 528-7716  
CERTIFICATE OF AUTHORIZATION NO. 484 EXPIRES JUNE 30, 2013

**SHEET 2 OF 2**

ENGINEERS SURVEYORS PLANNERS  
**SMITH ROBERTS BALDISCHWILER, LLC**  
100 NE 9th STREET - OKLAHOMA CITY, OKLAHOMA 73104 - TELEPHONE (405) 940-7000  
CERTIFICATE OF AUTHORIZATION NO. 3848 EXPIRES JUNE 30, 2013

UNIVERSITY NORTH PARK SECTION X  
A PLANNED UNIT DEVELOPMENT