

PRELIMINARY PLAT
211 BOYD
A PLANNED UNIT DEVELOPMENT
A PART OF THE N.E. 1/4, SECTION 31, T9N, R2W, I.M.
NORMAN, CLEVELAND COUNTY, OKLAHOMA

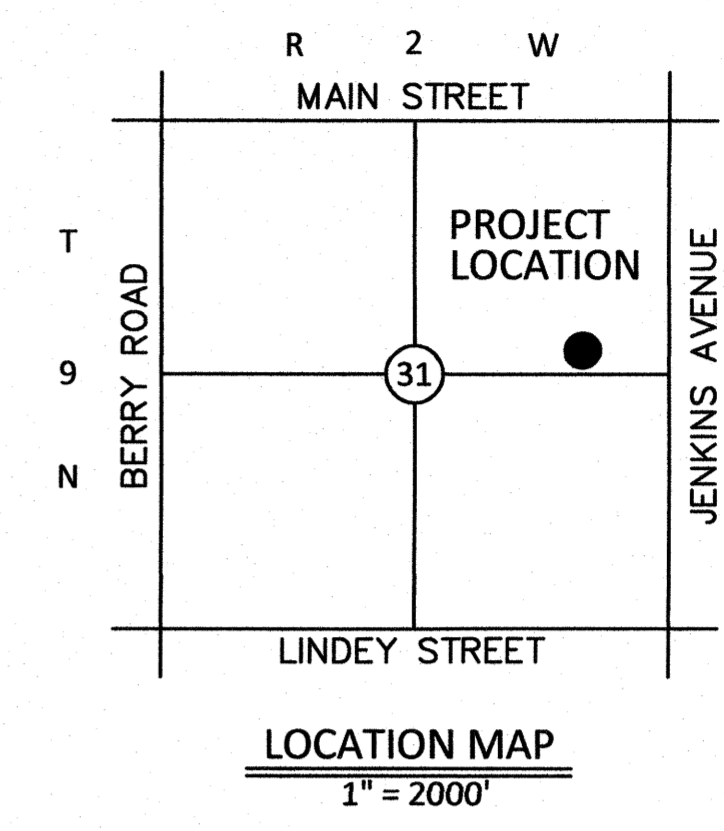
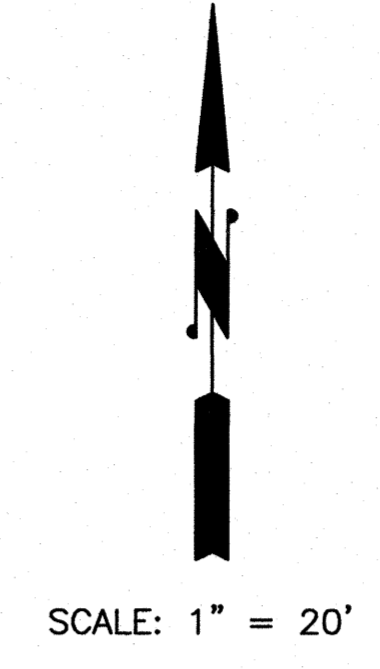
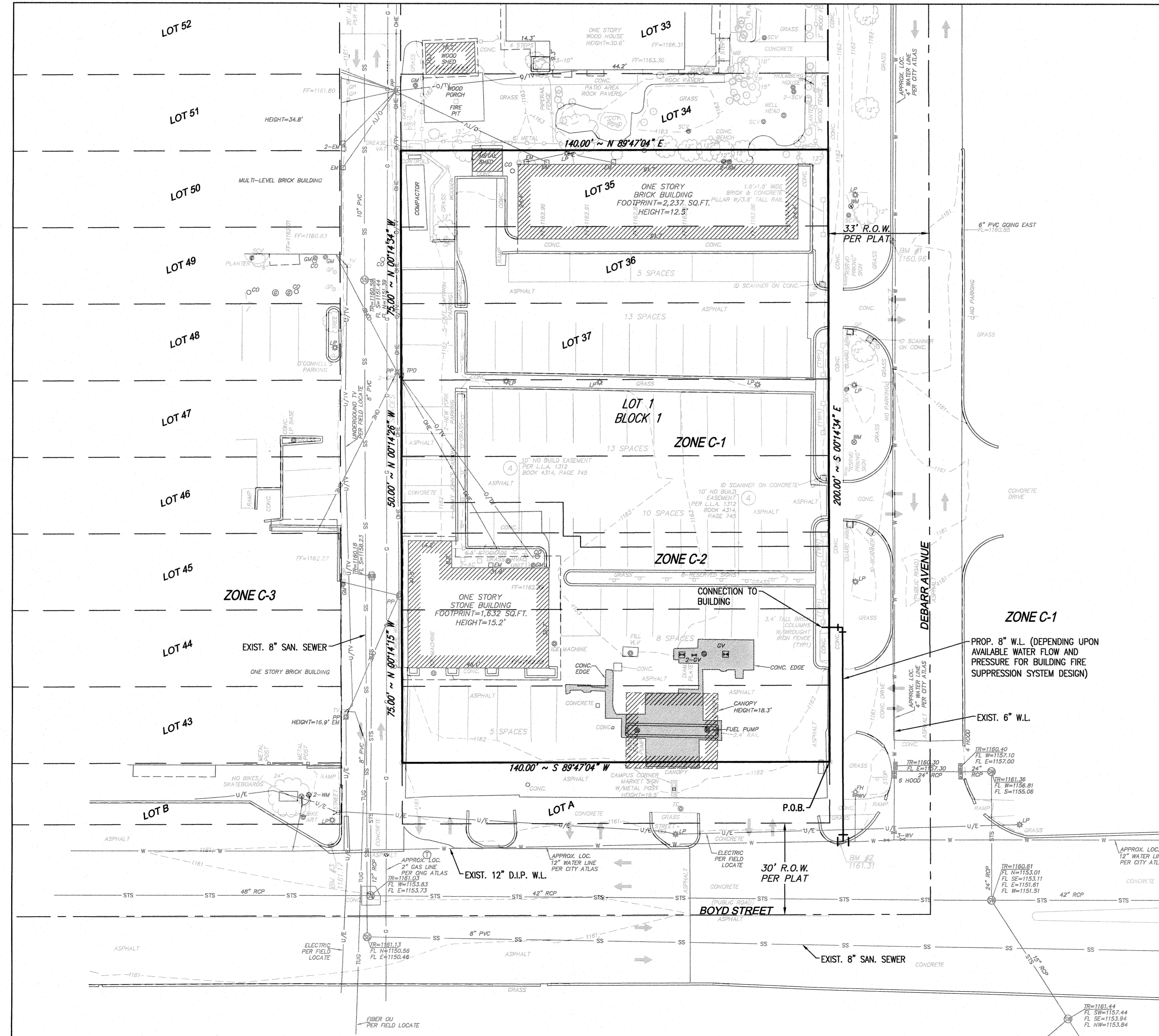
LEGAL DESCRIPTION:

Being a tract of land lying in the N.E. 1/4 of Section 31, T9N, R2W, of the Indian Meridian, Norman, Cleveland County, Oklahoma, being more particularly described as follows:

BEGINNING at the Southeast corner of Lot 42A, Block 2, as shown on the recorded Lot Line Adjustment 1312 (recorded in Book 4314, Page 745);

THENCE South 89°47'04" West a distance of 140.00 feet;
 THENCE North 00°14'15" West a distance of 75.00 feet;
 THENCE North 00°14'26" West a distance of 50.00 feet;
 THENCE South 89°48'11" West a distance of 0.01 feet;
 THENCE North 00°14'34" West a distance of 75.00 feet;
 THENCE North 89°47'04" East a distance of 140.00 feet;
 THENCE South 00°14'34" East a distance of 200.00 feet to the POINT OF BEGINNING.

Said tract contains 27,999 square feet, or 0.643 acres, more or less.



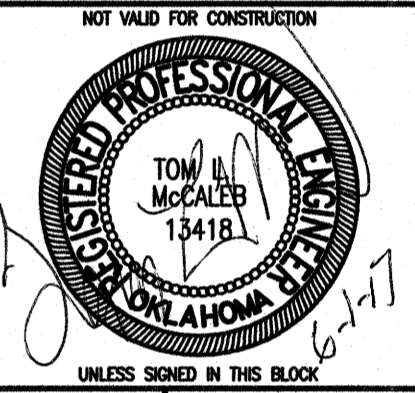
- NOTES:**
1. FIRE HYDRANTS WILL BE LOCATED AND INSTALLED IN ACCORDANCE WITH THE FINAL PLANS AND THE CITY OF NORMAN STANDARDS AND SPECIFICATIONS. ADDITIONAL FIRE HYDRANTS MAY BE REQUIRED ON THE INTERIORS OF THE LOTS TO PROVIDE FACADE COVERAGE AS WELL AS MEET DISTANCE LIMITATIONS BETWEEN THE FDC TO HYDRANT
 2. ALL SIDEWALKS WILL BE CONSTRUCTED IN ACCORDANCE WITH THE FINAL PLANS AND THE CITY OF NORMAN STANDARDS AND SPECIFICATIONS.
 3. REFER TO DRAINAGE REPORT FOR SPECIFIC DATA.
 4. PROPOSED WATERLINE ARE 8-INCH. (DEPENDING UP AVAILABLE WATER FLOW AND PRESSURE FOR BUILDING FIRE SUPPRESSION SYSTEM DESIGN).
 5. EXISTING STRUCTURES TO BE REMOVED.

Tom L. McCALEB
 TOM L. McCALEB, P.E. NO. 13418

*** FOR COMPLETE DRAINAGE CALCULATIONS SEE DRAINAGE REPORT. ALL STORM SEWER PIPES SHOWN ARE RCP (EQUIVALENT CMP WILL BE ALLOWED)**

© SMC CONSULTING ENGINEERS, P.C. ALL RIGHTS RESERVED. THESE DOCUMENTS MAY NOT BE USED FOR ANY PURPOSES WITHOUT PRIOR WRITTEN PERMISSION FROM SMC CONSULTING ENGINEERS, P.C.

OWNER / DEVELOPER
 329 Partners II, Limited Partnership
 P.O. Box 1184
 Norman, Oklahoma 73070



211 BOYD
W. BOYD ST. & DEBARR AVE.
NORMAN, OKLAHOMA

SMC	SMC Consulting Engineers, P.C. 815 West Main - Oklahoma City, OK 73106 PH: 405-232-7715 Fax: 405-232-7659	Project No.	6125.00
		Date	4/27/17
S	Oklahoma Certificate of Registration No. CA 464 EEP 06/29/2017	Scale	1" = 20'
		Drawn By	D.G.
E	Oklahoma State Board of Professional Engineers	Engineer	Tom L. McCALEB
		P.E. Number	13418
C	S	Revision	4/17/17
		Date	4/28/17

PROJECT NO.: 6125.00
 DATE: 4/27/17
 SCALE: 1" = 20'
 DRAWN BY: D.G.
 ENGINEER: TOM L. McCALEB
 P.E. NUMBER: 13418

Preliminary Plat
 SHEET NO.
1