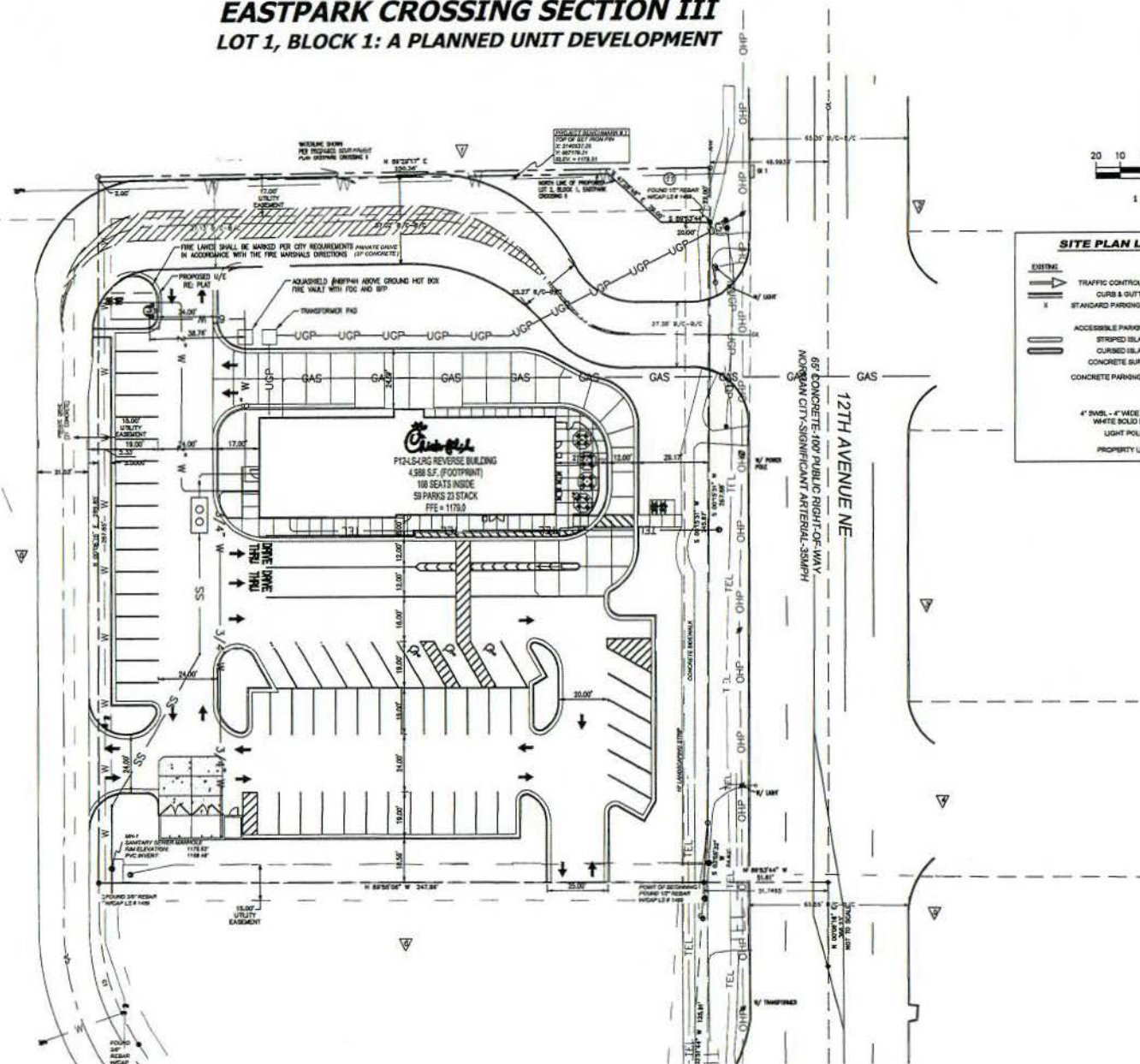


**FINAL SITE DEVELOPMENT PLAN  
EASTPARK CROSSING SECTION III  
LOT 1, BLOCK 1: A PLANNED UNIT DEVELOPMENT**



**SITE PLAN LEGEND**

EXISTING	PROPOSED
TRAFFIC CONTROL ARROW	TRAFFIC CONTROL ARROW
CURB & GUTTER	CURB & GUTTER
STANDARD PARKING QUANTITY	STANDARD PARKING QUANTITY
ACCESSIBLE PARKING SPACE	ACCESSIBLE PARKING SPACE
STRIPED ISLAND	STRIPED ISLAND
CURBED ISLAND	CURBED ISLAND
CONCRETE PARKING SURFACE	CONCRETE PARKING SURFACE
4" SWEL - 4" WIDE SINGLE WHITE SOLID LINE	4" SWEL - 4" WIDE SINGLE WHITE SOLID LINE
LIGHT POLE	LIGHT POLE
PROPERTY LINE	PROPERTY LINE

REVISIONS	DATE	DESCRIPTION

CLIENT  
**Oldacre McDonald, LLC**  
CONTACT: MARK McDONALD / 678-238-6444  
3441 Green Hills Village Drive, Suite 401, Marietta, GA 30067

**GREYDEN**  
ENGINEERING  
1000 Peachtree Street, NE, Suite 300  
Atlanta, Georgia 30309  
PH: 770-573-6801 FAX: 678-302-6362



LAND DISTURBANCE PLANS  
**LANDLORD WORK FOR CHICK-FIL-A DEVELOPMENT**  
LOCATED IN A PART OF THE NE 1/4 OF THE SE 1/4 OF SEC. 16, T. 24 N., R. 14 W.,  
18E STREET CROSSING SEC. PARCELS 1, 2, 3 & 10E 15E 16E  
**FINAL DEVELOPMENT PLAN**

DATE	06/11/17
JOB NO.	17-018
DRAWN	SM
CHECKED	RAO
SCALE	AS SHOWN
SHEET	C200