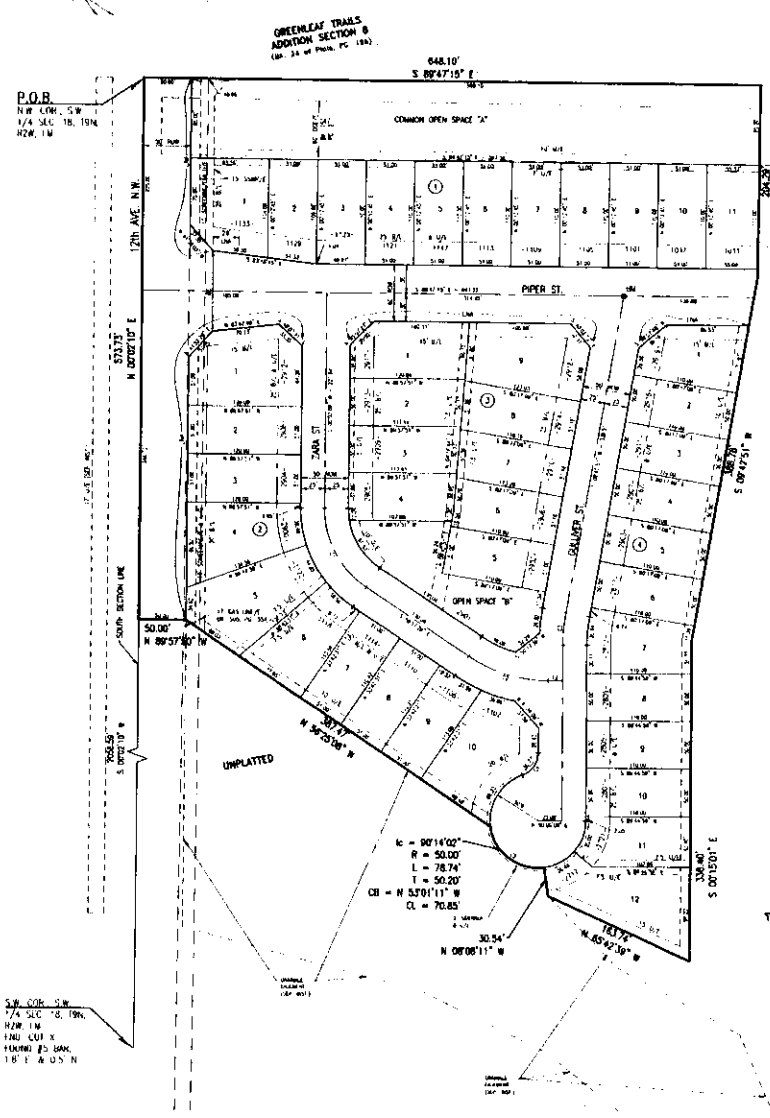
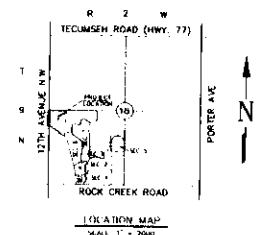


FINAL PLAT
TRAILWOODS WEST
 BEING A PART OF THE S.W. 1/4, SECTION 18, T9N, R2W I.M.
 NORMAN, CLEVELAND COUNTY, OKLAHOMA



TRAILWOODS ADDITION SECTION 8
 (Ord. 24 of Public, PG. 30)

TRAILWOODS ADDITION SECTION 8
 (Ord. 24 of Public, PG. 31)

LEGAL DESCRIPTION

A tract of land lying in the Southeast Quarter (SW/4) of Section Eighteen (18), Township Nine North (9N) Range Ten West (10W), in the Indian Meridian, Norman, Cleveland County, Oklahoma, and being more particularly described as follows:

COMMENCEMENT at the Southeast corner of said SW/4, THENCE North 02°02'10" East along the West line of said SW/4 a distance of 2028.39 feet to the POINT OF BEGINNING.

THENCE continuing North 82°02'10" East a distance of 525.73 feet to the Northwest corner of said SW/4, THENCE South 89°47'19" East along said North line a distance of 498.19 feet, THENCE South 02°27'25" West a distance of 544.25 feet, THENCE South 89°47'19" West a distance of 208.78 feet, THENCE South 02°15'04" East a distance of 138.40 feet, THENCE North 89°42'37" West a distance of 183.74 feet, THENCE North 08°08'11" West a distance of 33.54 feet to a point on a 20-foot tapered curve, THENCE around a curve to the right having a radius of 50.00 feet (said curve subtended by a chord which bears North 19°17'11" West a distance of 47.83 feet) and an arc length of 78.74 feet, THENCE North 78°25'08" West a distance of 387.47 feet, THENCE North 89°51'50" West a distance of 303.05 feet to the POINT OF BEGINNING.

-Said tract contains 456,447 square feet, or 10.462 acres, more or less.

SCALE: 1" = 60'
 TOTAL LOTS = 42

BASE OF BEARING FOR THIS FINAL PLAT IS S 02°02'10" W AS SHOWN ON THE WEST LINE OF SEC. 18

CURVE TABLE

STATION	BEARING	DISTANCE	CHORD BEARING	CHORD DISTANCE
1	N 82°02'10" E	2028.39	N 82°02'10" E	2028.39
2	N 82°02'10" E	525.73	N 82°02'10" E	525.73
3	S 89°47'19" E	498.19	S 89°47'19" E	498.19
4	S 02°27'25" W	544.25	S 02°27'25" W	544.25
5	S 89°47'19" W	208.78	S 89°47'19" W	208.78
6	S 02°15'04" E	138.40	S 02°15'04" E	138.40
7	N 89°42'37" W	183.74	N 89°42'37" W	183.74
8	N 08°08'11" W	33.54	N 08°08'11" W	33.54
9	N 19°17'11" W	47.83	N 19°17'11" W	47.83
10	N 78°25'08" W	78.74	N 78°25'08" W	78.74
11	N 89°51'50" W	303.05	N 89°51'50" W	303.05
12	N 82°02'10" W	303.05	N 82°02'10" W	303.05

LINE TABLE

STATION	BEARING	DISTANCE
1	N 82°02'10" E	2028.39
2	N 82°02'10" E	525.73
3	S 89°47'19" E	498.19
4	S 02°27'25" W	544.25
5	S 89°47'19" W	208.78
6	S 02°15'04" E	138.40
7	N 89°42'37" W	183.74
8	N 08°08'11" W	33.54
9	N 19°17'11" W	47.83
10	N 78°25'08" W	78.74
11	N 89°51'50" W	303.05
12	N 82°02'10" W	303.05

STORM DRAINAGE DETENTION FACILITY EASEMENT

STORM DRAINAGE DETENTION FACILITY EASEMENTS ARE HEREBY ESTABLISHED AS SHOWN TO PROVIDE FOR THE COLLECTION OF SURFACE WATER AND CONDUCTION AS APPROVED BY THE CITY ENGINEER. THIS EASEMENT SHALL BE MAINTAINABLE WITHIN THE DRAINAGE DETENTION FACILITY EASEMENT SHALL BE THE SOLE DUTY AND RESPONSIBILITY OF THE PROPERTY OWNERS. ACCORDING TO THE PLAT OF "SUNBELTWAY BELT" HOMELANDS MAINTENANCE IS RECEIVED OR SUBJECT TO OTHER DISCRETION, CIRCUMSTANCES AND IS DETERMINED TO BE A BURDEN OR INJURY TO PUBLIC WELFARE BY THE CITY ENGINEER. MAINTENANCE MAY BE PERFORMED BY THE GOVERNING JURISDICTION WITH COSTS ASSIGNED TO AND PAID BY THE CITY ENGINEER. MAINTENANCE OF THE FACILITY SHALL BE THE RESPONSIBILITY OF THE PUBLIC WORKS DEPARTMENT. THE PUBLIC WORKS DEPARTMENT SHALL HAVE THE RIGHT TO ENTER UPON THE EASEMENT FOR PURPOSES OF INSPECTING, MAINTAINING AND CONDUCTING MAINTENANCE OF THE FACILITY UNDER THE SUPERVISION AND CONTROL OF THE PUBLIC WORKS DEPARTMENT. PROPERTY OWNERS SHALL BE RESPONSIBLE FOR THE FACILITY. THE EASEMENT SHALL BE CONSIDERED AS A BURDEN UPON THE EASEMENT PROVIDED THE EASEMENT DOES NOT INTERFERE WITH THE FUNCTION OF THE DETENTION FACILITY.

- SSW/E = SANITARY SEWER EASEMENT
- ROW = RIGHT OF WAY
- D/E = DRAINAGE EASEMENT
- PE/E = PEDESTRIAN EASEMENT
- EMA = LIMITS OF ROAD ACCESS
- U/E = UTILITY EASEMENT
- B/L = BUILDING LINE
- 1000- = ADDRESS

DATE: JANUARY 11, 2011
 SMC Consulting Engineers, P.C.
 815 W. Main Street
 Oklahoma City, OK 73106
 PH: (405) 232-7715
 Oklahoma Engineer Reg. # 8-30-2021

NOTE: THE UNIT OF MEASUREMENT SHOWN FOR ALL DIMENSIONS ON THE FINAL PLAT IS U.S. SURVEY FEET.

TRAILWOODS WEST
 A PLANNED UNIT DEVELOPMENT
 FINAL PLAT SHEET 2 OF 2