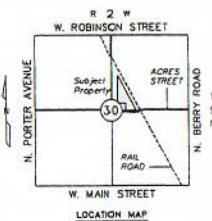
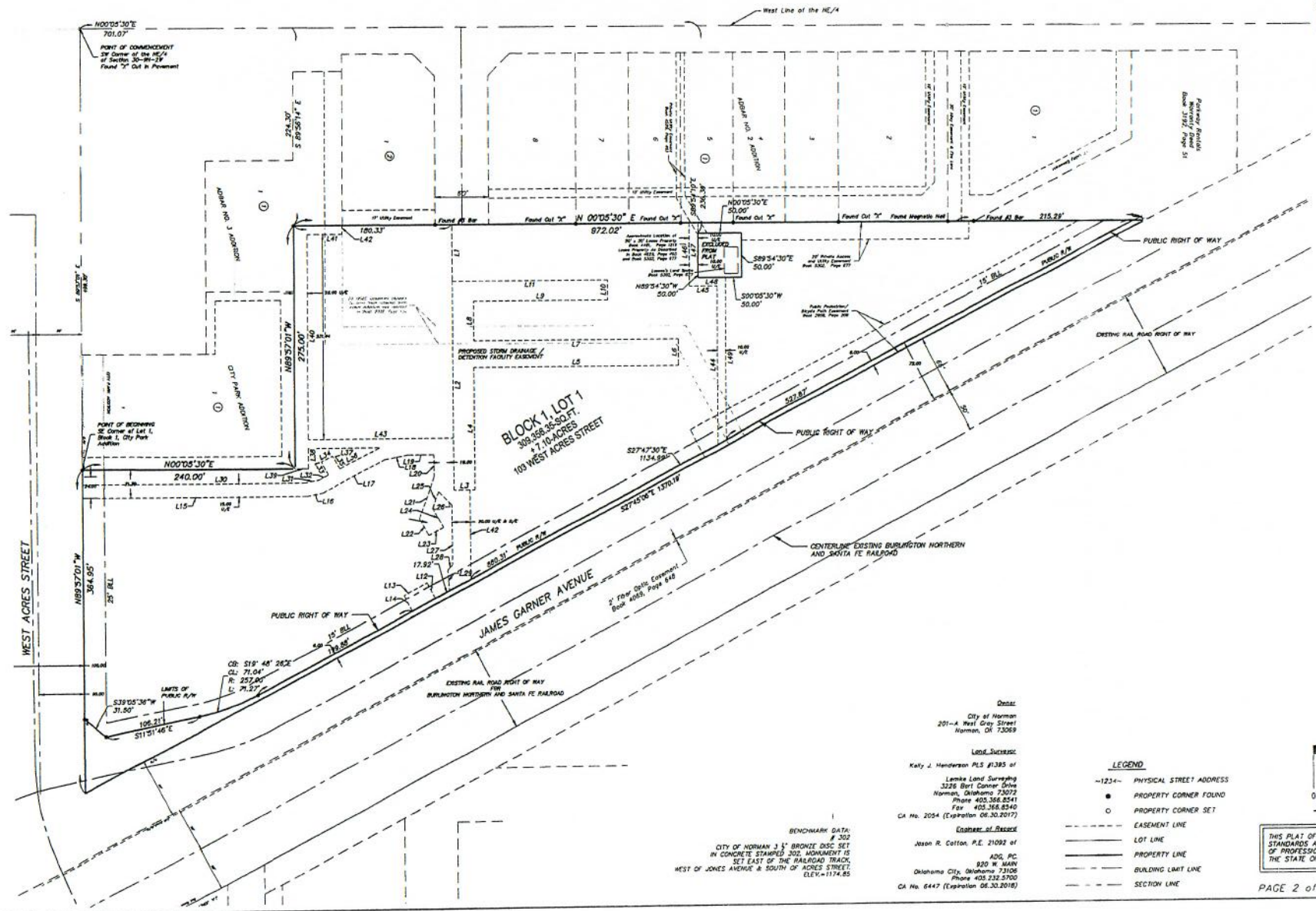


**FINAL PLAT OF NORMAN PUBLIC LIBRARY CENTRAL**  
 A FINAL PLAT OF PART OF THE NE/4, SECTION 30, TOWNSHIP 9 NORTH, RANGE 2 WEST,  
 OF THE INDIAN MERIDIAN, NORMAN, CLEVELAND COUNTY, OKLAHOMA



**LINE TABLE**

| Line # | LENGTH (FT) | BEARING     |
|--------|-------------|-------------|
| L1     | 648.2       | N89°00'00"W |
| L2     | 218.2       | N89°00'00"W |
| L3     | 233.2       | N89°00'00"W |
| L4     | 152.7       | N89°00'00"W |
| L5     | 224.9       | N89°00'00"W |
| L6     | 294.2       | N89°00'00"W |
| L7     | 214.4       | N89°00'00"W |
| L8     | 432.8       | N89°00'00"W |
| L9     | 150.2       | N89°00'00"W |
| L10    | 233.2       | N89°00'00"W |
| L11    | 178.5       | N89°00'00"W |
| L12    | 200.0       | S27°45'00"W |
| L13    | 360.0       | S27°45'00"W |
| L14    | 263.6       | N27°45'00"E |
| L15    | 252.9       | N89°00'00"W |
| L16    | 18.7        | N11°30'00"E |
| L17    | 182.2       | N27°45'00"E |
| L18    | 277.2       | N11°30'00"E |
| L19    | 28.0        | N89°00'00"W |
| L20    | 23.8        | N89°00'00"W |
| L21    | 18.7        | N27°45'00"E |
| L22    | 230.8       | N89°00'00"W |
| L23    | 18.0        | N89°00'00"W |
| L24    | 238.8       | S27°45'00"W |
| L25    | 18.5        | N27°45'00"E |
| L26    | 212.2       | N89°00'00"W |
| L27    | 481.0       | N89°00'00"W |
| L28    | 7.8         | S43°00'00"E |
| L29    | 238.0       | N27°45'00"E |
| L30    | 251.0       | N89°00'00"W |
| L31    | 18.8        | N27°45'00"E |
| L32    | 62.0        | S27°45'00"W |
| L33    | 23.0        | S27°45'00"W |
| L34    | 15.0        | S27°45'00"W |
| L35    | 22.4        | S27°45'00"W |
| L36    | 3.8         | N89°00'00"W |
| L37    | 101.7       | N89°00'00"W |
| L38    | 181.2       | N89°00'00"W |
| L39    | 17.8        | S27°45'00"W |
| L40    | 22.4        | S27°45'00"W |
| L41    | 3.8         | N89°00'00"W |
| L42    | 101.7       | N89°00'00"W |
| L43    | 181.2       | N89°00'00"W |
| L44    | 17.8        | S27°45'00"W |
| L45    | 3.8         | S27°45'00"W |
| L46    | 101.7       | N89°00'00"W |
| L47    | 181.2       | N89°00'00"W |
| L48    | 17.8        | S27°45'00"W |
| L49    | 3.8         | S27°45'00"W |
| L50    | 101.7       | N89°00'00"W |



**BLOCK 1 LOT 1**  
 389,268.85 SQ. FT.  
 1.710-ACRES  
 100 WEST ACRES STREET

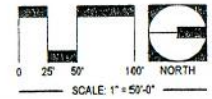
**Date:**  
 City of Norman  
 201-A West Gray Street  
 Norman, OK 73069

**Land Surveyor:**  
 Katy J. Henderson PLS #1385 of  
 Landmark Land Surveying  
 3226 Bret Corner Drive  
 Norman, Oklahoma 73072  
 Phone 405.368.8541  
 Fax 405.368.8340  
 CA No. 2054 (Expiration 06.30.2017)

**Engineer of Record:**  
 Jason R. Cotton, P.E. 21092 of  
 A.D.S., P.C.  
 800 W. MAIN  
 Oklahoma City, Oklahoma 73106  
 Phone 405.232.5700  
 CA No. 6447 (Expiration 06.30.2018)

**BENCHMARK DATA:**  
 # 302  
 CITY OF NORMAN 3 1/2" BRONZE DISC SET  
 IN CONCRETE STAMPED 302. MONUMENT IS  
 SET EAST OF THE RAILROAD TRACK,  
 WEST OF JONES AVENUE & SOUTH OF ACRES STREET.  
 ELEV.=1174.65

- LEGEND**
- 1234- PHYSICAL STREET ADDRESS
  - PROPERTY CORNER FOUND
  - PROPERTY CORNER SET
  - EASEMENT LINE
  - LOT LINE
  - PROPERTY LINE
  - BUILDING LIMIT LINE
  - SECTION LINE



THIS PLAT OF SURVEY MEETS THE MINIMUM TECHNICAL STANDARDS AS ADOPTED BY THE BOARD OF LICENSURE OF PROFESSIONAL ENGINEERS AND LAND SURVEYORS FOR THE STATE OF OKLAHOMA.