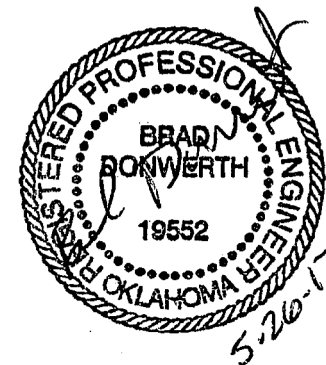


*CAMPUS CORNER BANNER  
ASP AVE. AND W. BOYD ST.  
NORMAN, OKLAHOMA*

*Prepared by  
GROSSMAN & KEITH ENGINEERING CO.  
10408 GREENBRIAR PLACE  
Oklahoma City, OK 73159  
(405) 691-3213*



INDEX

<u>SHEET NO.</u>	<u>DESCRIPTION</u>
S-1	TITLE SHEET
S-2	LOCATION MAP & NOTES
S-3	PLAN & ELEVATION
S-4	CONNECTION DETAILS
S-5	SIGHT DISTANCE DIAGRAM

<b>GROSSMAN &amp; KEITH ENGINEERING COMPANY</b> 10408 GREENBRIAR PLACE - OKLAHOMA CITY, OKLAHOMA PH: 691-3213 FAX: 691-3214 CA. #74 EXPIRES 6-30-2018				
REVISIONS:		DESIGN:	DRAWN:	SHT. NO.
DATE				S-1

**BUILDING CODE:**

2009 INTERNATIONAL BUILDING CODE INCLUDING STATE AND LOCAL AMENDMENTS.

**DESIGN LOADS:**

WIND LOAD: 90 mph, EXPOSURE C, IMPORTANCE FACTOR = 1.00

**STRUCTURAL STEEL NOTES:**

1. STRUCTURAL STEEL PLATES, ANGLES, SMOOTH ROD, ETC. SHALL CONFORM TO ASTM A36. Fy = 36,000 PSI. STRUCTURAL HOLLOW SECTIONS SHALL CONFORM TO ASTM A500 GRADE B. Fy = 46,000 PSI.
2. ALL THREADED ROD SHALL BE 5/8" Ø AND CONFORM TO ASTM F1554 GRADE 55.
3. ALL DIMENSIONS MUST BE FIELD VERIFIED PRIOR TO CONSTRUCTION. VERIFY ALL LAYOUT DIMENSIONS AND ELEVATIONS AT NEW CONSTRUCTION AND CORRELATE TO EXISTING CONDITIONS.
4. WELDING SHALL BE ELECTRIC SHIELDED ARC PROCESS, DONE BY A CERTIFIED WELDER APPROVED BY THE BUILDING DEPARTMENT, WITH E70.XX WELDING ELECTRODES IN ACCORDANCE WITH AWS D1.1.
5. STEEL PLATES BEARING ON BRICK SHALL BE DRY PACKED WITH A HIGH STRENGTH GROUT TO PROVIDE FOR FULL BEARING.
6. ALL STRUCTURAL STEEL SHALL BE SHOP PRIMED. AT COMPLETION OF ERECTION, ALL EXPOSED METAL SHALL BE PAINTED. FABRICATION AND ERECTION SHALL BE IN ACCORDANCE WITH THE CURRENT EDITIONS OF THE AISC "CODE OF STANDARD PRACTICE FOR STEEL BUILDINGS AND BRIDGES" AND THE AISC "LOAD AND RESISTANCE FACTOR DESIGN SPECIFICATION FOR STRUCTURAL STEEL BUILDINGS".
7. ALL WORK FOR INSTALLATION OF STRUCTURAL STEEL SHALL CONFORM TO ALL APPLICABLE OSHA SAFETY LAWS AND CODES.

**GALVANIZED CABLE AND HARDWARE NOTES:**

1. 5/16" - 7x19 GALVANIZED AIRCRAFT CABLE SHALL HAVE A MINIMUM BREAKING STRENGTH OF 9,800 LBS.
2. CABLE CLIPS FOR 5/16" CABLE SHALL BE GALVANIZED.
3. THIMBLES FOR 5/16" CABLE SHALL BE GALVANIZED.

**GROUT NOTE:**

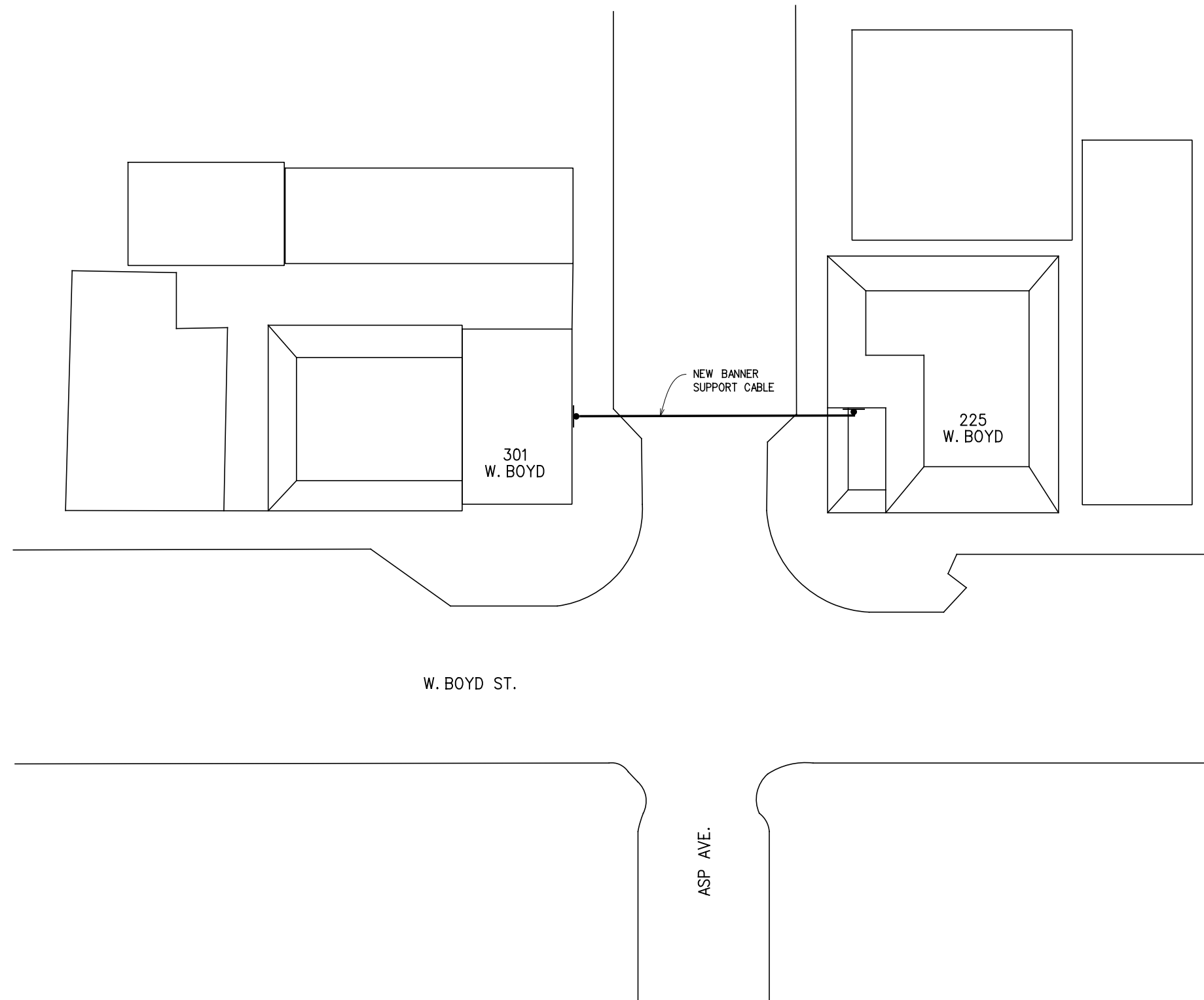
1. STRUCTURAL STEEL BEARING ON THE BRICK WALL SHALL BE DRY PACKED WITH AN APPROVED HIGH STRENGTH NON-METALIC NON-SHRINK GROUT.

**SILICONE CAULK NOTE:**

1. SILICONE CAULK SHALL BE USED TO WATERPROOF ALL EDGES OF THE PLATES. CAULK AROUND ALL PLATES BOTH INSIDE AND OUTSIDE.

**CAUTION**

COORDINATE ANY CLOSING OF LANE(S) ON ASP AVENUE FOR THE INSTALLATION OF THE CABLE WITH THE TRAFFIC DEPARTMENT.



LOCATION MAP

**GROSSMAN & KEITH ENGINEERING COMPANY**  
 10408 GREENBRIAR PLACE - OKLAHOMA CITY, OKLAHOMA  
 PH: 691-3213 FAX: 691-3214  
 CA. #74 EXPIRES 6-30-2018

**LOCATION MAP & NOTES**



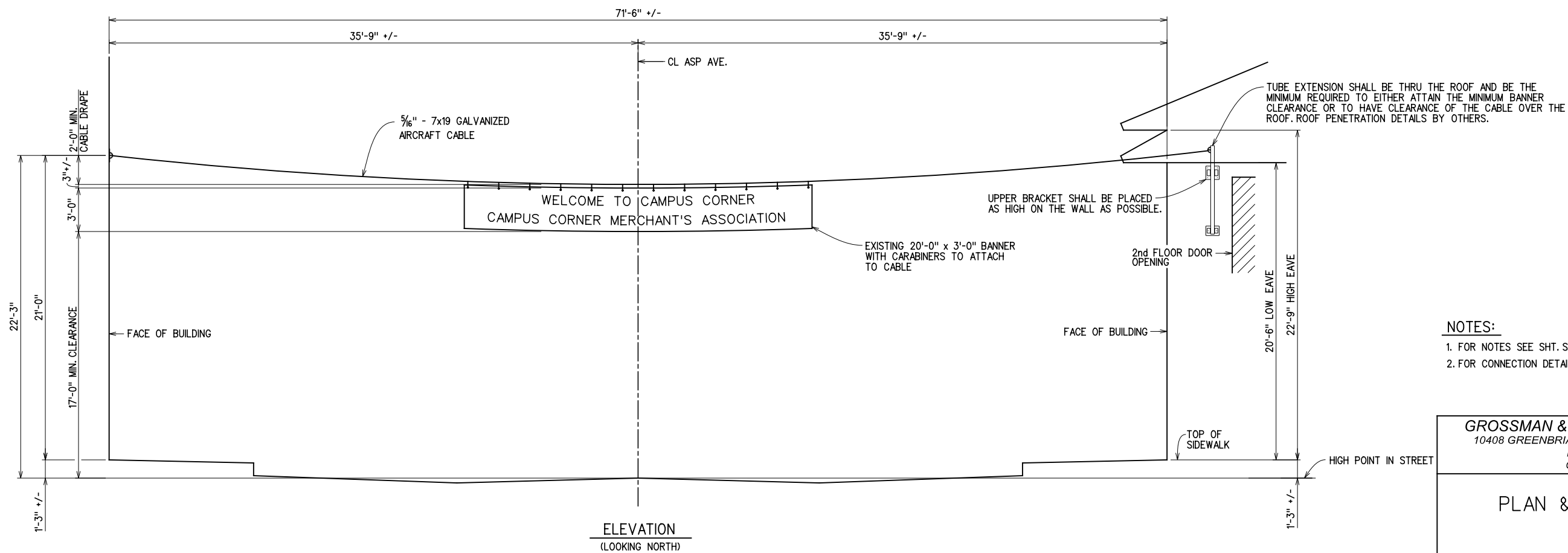
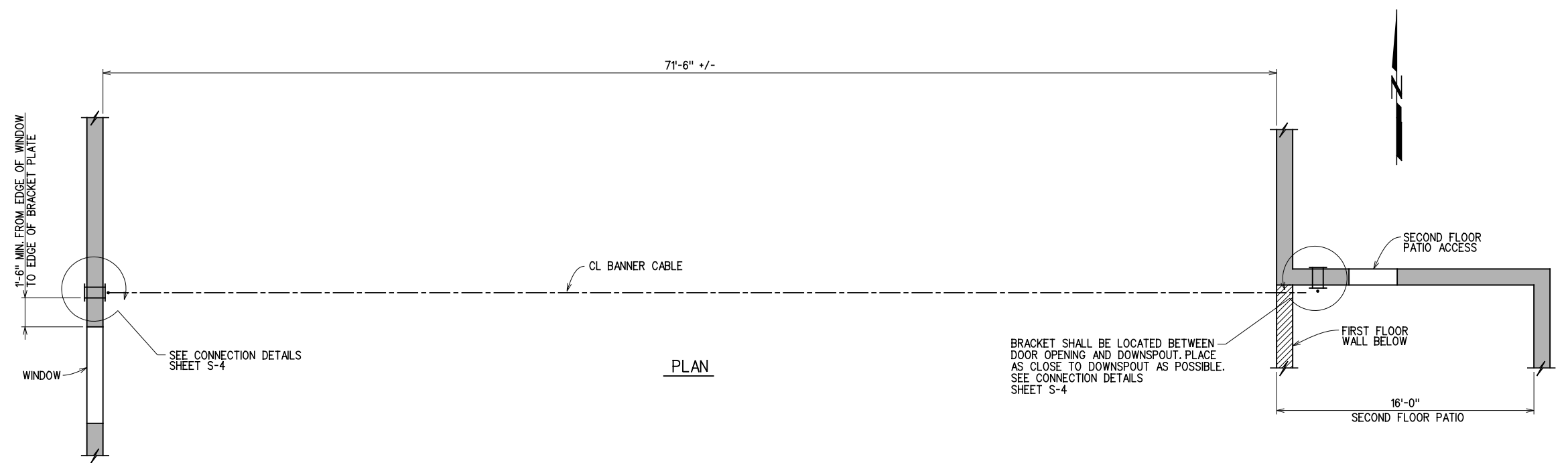
REVISIONS:		DESIGN:	DRAWN:	SHT.NO.
DATE				S-2

X:\Misc\BOYD BANNER\S-2.dgn

5/26/2017

X:\Misc\BOYD BANNER\S-3.dgn

5/26/2017



**NOTES:**

- 1. FOR NOTES SEE SHT. S-2.
- 2. FOR CONNECTION DETAILS SEE SHT. S-4.

**GROSSMAN & KEITH ENGINEERING COMPANY**  
 10408 GREENBRIAR PLACE - OKLAHOMA CITY, OKLAHOMA  
 PH: 691-3213 FAX: 691-3214  
 CA. #74 EXPIRES 6-30-2018

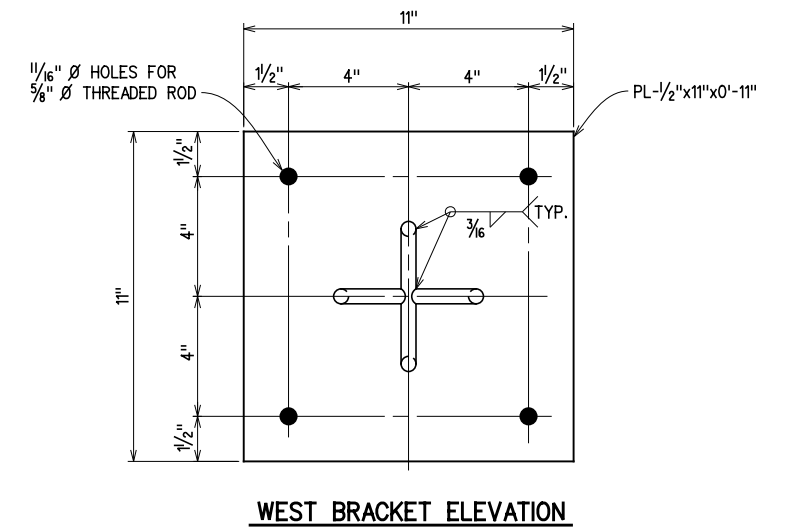
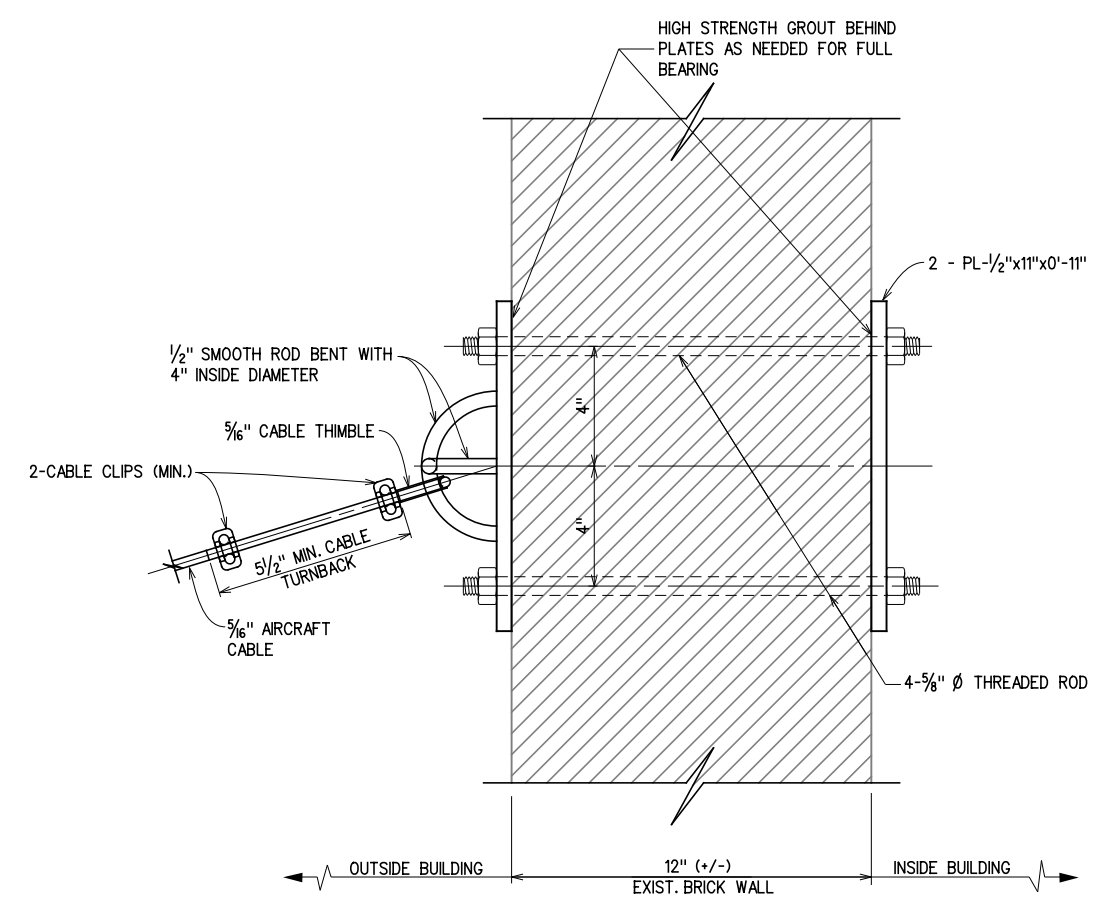
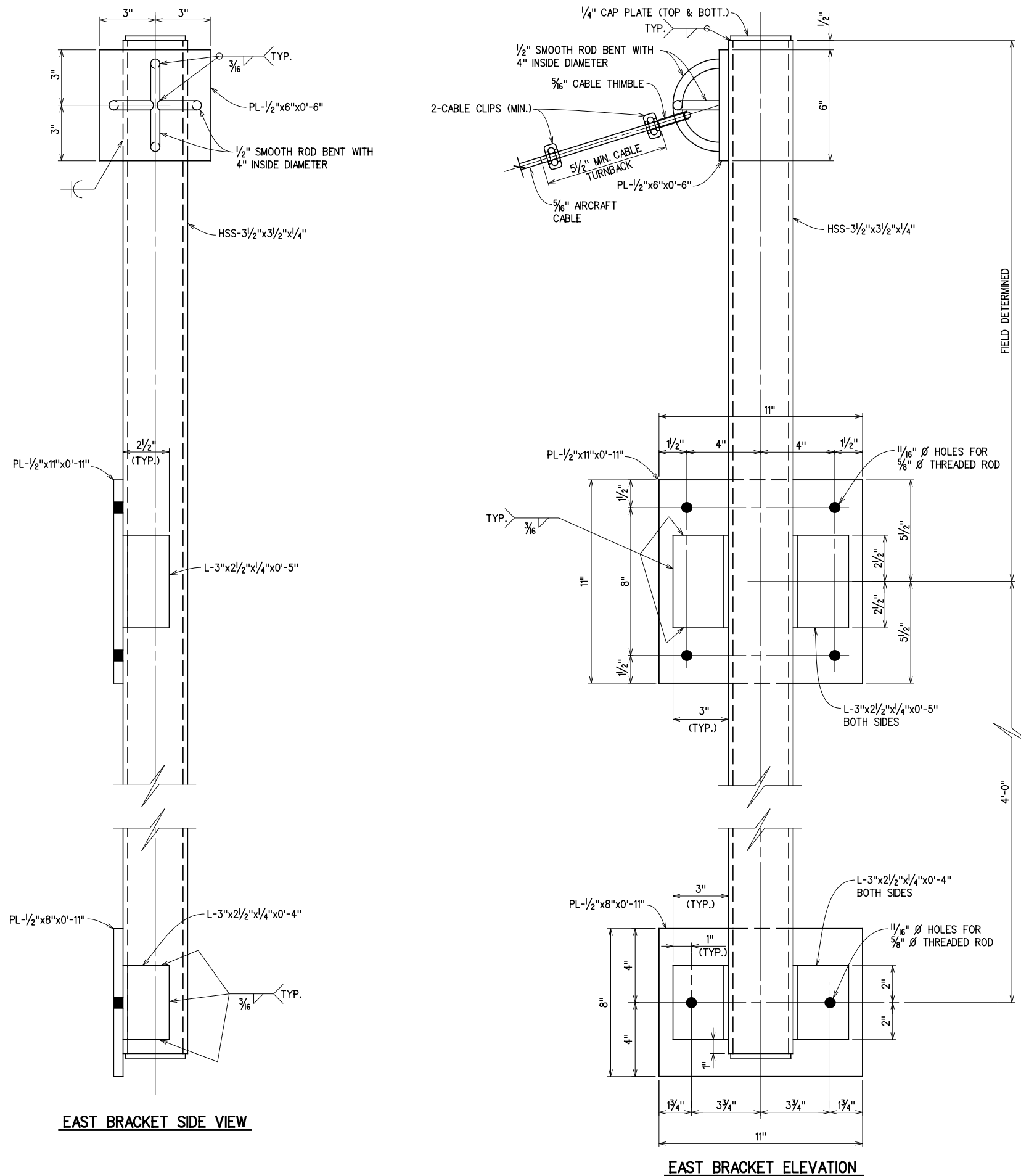
**PLAN & ELEVATION**



REVISIONS:		DESIGN:	DRAWN:	SHT. NO.
DATE				S-3

X:\Misc\BOYD\_BANNER\S-4.dgn

5/26/2017



**NOTES:**

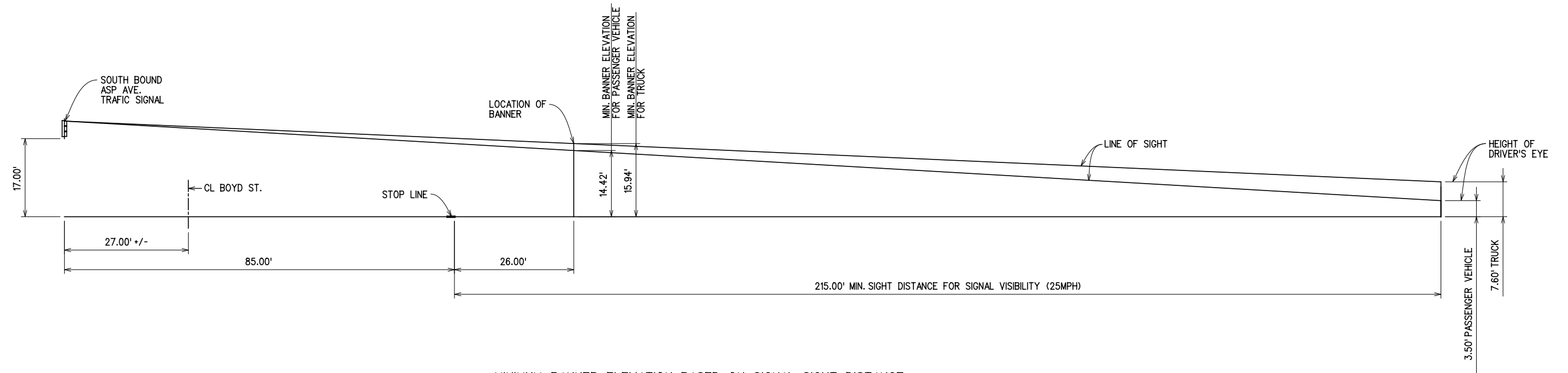
1. FOR NOTES SEE SHT. S-2.

**GROSSMAN & KEITH ENGINEERING COMPANY**  
10408 GREENBRIAR PLACE - OKLAHOMA CITY, OKLAHOMA  
PH: 691-3213 FAX: 691-3214  
CA. #74 EXPIRES 6-30-2018

<b>CONNECTION DETAILS</b>			
REVISIONS:	DESIGN:	DRAWN:	SHT. NO.
DATE:			S-4



X:\Misc\BOYD\_BANNER\S-3.dgn  
5/26/2017



MINIMUM BANNER ELEVATION BASED ON SIGNAL SIGHT DISTANCE

GROSSMAN & KEITH ENGINEERING COMPANY  
10408 GREENBRIAR PLACE - OKLAHOMA CITY, OKLAHOMA  
PH: 691-3213 FAX: 691-3214  
CA. #74 EXPIRES 6-30-2018

SIGHT DISTANCE DIAGRAM



REVISIONS:		DESIGN:	DRAWN:	SHT.NO.
DATE				S-5