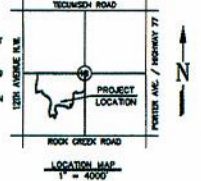
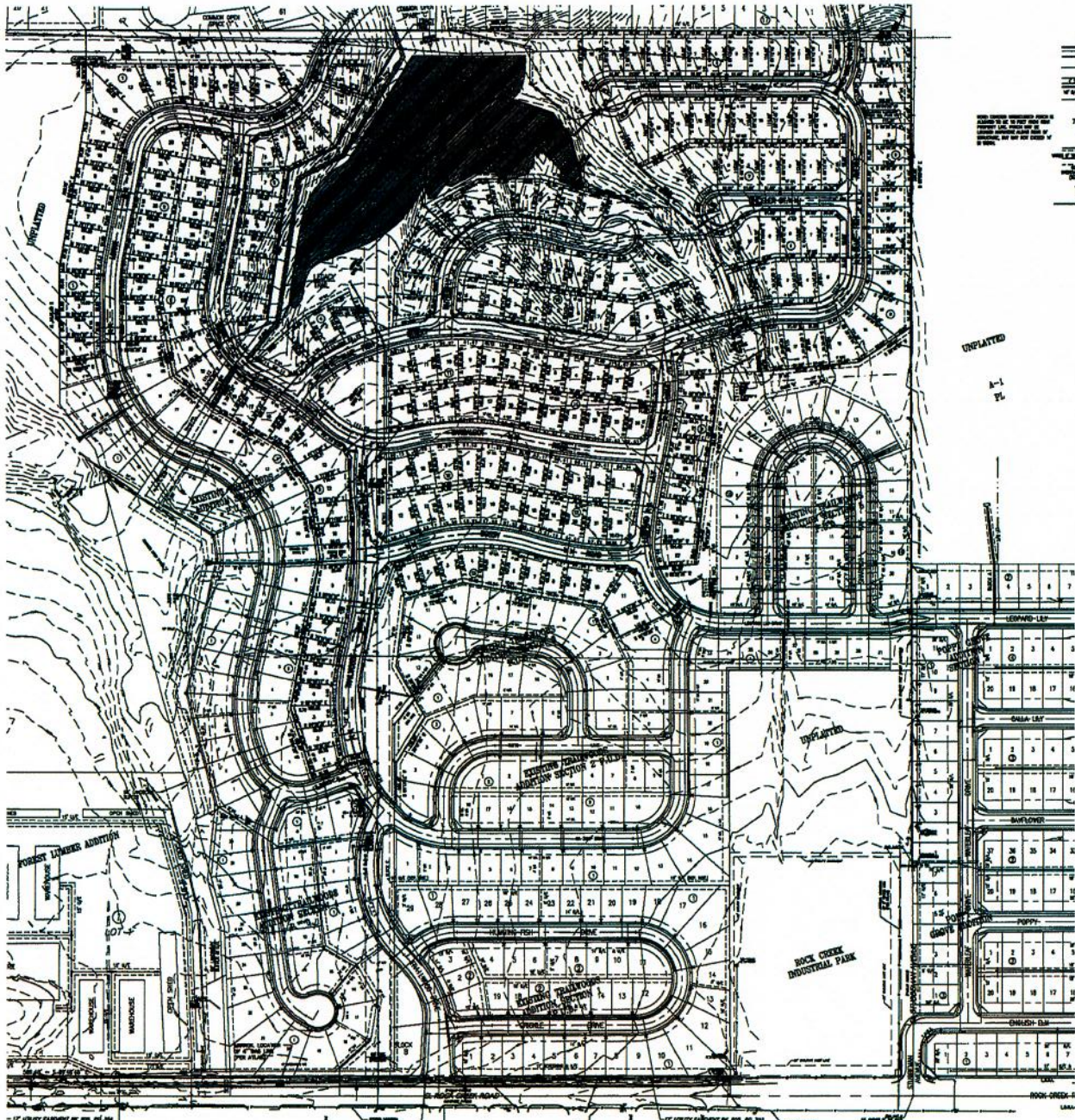


PRELIMINARY PLAT

TRAILWOODS ADDITION

A PLANNED UNIT DEVELOPMENT
A PART OF THE S.W. 1/4, SECTION 18, T9N, R2W, I.M.
NORMAN, CLEVELAND COUNTY, OKLAHOMA



- NOTES:
- EXISTING ZONING PERMITS.
 - ALL PUBLIC UTILITIES SHALL BE DEIGNED IN ACCORDANCE WITH THE CITY OF NORMAN SPECIFICATIONS.
 - ALL STREETS SHALL BE DEIGNED IN ACCORDANCE WITH THE CITY OF NORMAN SPECIFICATIONS.
 - ALL PUBLIC UTILITIES SHALL BE IN ACCORD WITH SPECIFICATIONS.
 - ALL SANITARY SEWER LINES TO BE 6\"/>

Legal Description

A part of land being in the Southeast Quarter (SE 1/4) of Section 18, Township 9 North, Range 2 West, I.M. 2076, of the Indian Meridian, Norman, Cleveland County, Oklahoma, and being more particularly described as follows:

COMMENCED at the S.E. corner of said SE 1/4 of Section 18, THENCE South 07°51'49\"/>

SCALE: 1\"/>

STORM DRAINAGE DEDICATION FACILITY AGREEMENT

STORM DRAINAGE FACILITY FACILITIES ARE HEREBY CONSIDERED AS GIVEN TO THE CITY OF NORMAN FOR THE SERVICE OF STORM DRAINAGE WORKS CONSIDERED AS APPROVED BY THE CITY ENGINEER. ALL IMPROVEMENTS UNDER THE STORM DRAINAGE FACILITY DEDICATION SHALL BE THE RESPONSIBILITY OF THE OWNER OF THE PROPERTY INTERESTED IN THE FACILITY. THE CITY OF NORMAN WILL MAINTAIN AND OPERATE THE FACILITY AT ALL TIMES. THE CITY OF NORMAN WILL NOT BE RESPONSIBLE FOR THE MAINTENANCE AND OPERATION OF THE FACILITY IF THE FACILITY IS NOT MAINTAINED AND OPERATED IN ACCORDANCE WITH THE SPECIFICATIONS AND STANDARDS OF THE CITY OF NORMAN. THE CITY ENGINEER SHALL HAVE THE RIGHT TO OVERSEE THE DEDICATION OF THE FACILITY. THE FACILITY SHALL BE MAINTAINED AND OPERATED IN ACCORDANCE WITH THE SPECIFICATIONS AND STANDARDS OF THE CITY OF NORMAN. THE CITY ENGINEER SHALL HAVE THE RIGHT TO OVERSEE THE DEDICATION OF THE FACILITY. THE FACILITY SHALL BE MAINTAINED AND OPERATED IN ACCORDANCE WITH THE SPECIFICATIONS AND STANDARDS OF THE CITY OF NORMAN. THE CITY ENGINEER SHALL HAVE THE RIGHT TO OVERSEE THE DEDICATION OF THE FACILITY.

LEGEND

--- 12\"/>

--- 18\"/>

OWNER/DEVELOPER

TERRA VERDE DEVELOPMENT, L.L.C.
1320 NORTH PORTER
NORMAN, OK 73071
(405) 364-1152

DESIGNED BY :

S/MC Consulting Engineers, P.C.
815 W. MAIN
OKLAHOMA CITY, OK 73108
(405) 232-7715

55.402 ACRES
232 LOTS
4.21 LOTS PER ACRE

PRELIMINARY PLAT
TRAILWOODS ADDITION
A PLANNED UNIT DEVELOPMENT
ROCK CREEK RD. & 12TH AVE. N.W.
NORMAN, OKLAHOMA

S/MC Consulting Engineers, P.C.
815 W. MAIN
OKLAHOMA CITY, OK 73108
PH: 405-232-7715 FAX: 405-232-7715

S/MC	
DATE REVISED	REASON FOR CHANGE
PROJECT NO.	
SHEET NO. 1 OF 1	

