

**LEGAL DESCRIPTION**

A tract of land situated within the Northwest Quarter (NW/4) of Section Three (3), Township Eight North (T8N), Range Two West (R2W) of the Indian Meridian (I.M.), Cleveland County, Oklahoma, being more particularly described by metes and bounds as follows:

COMMENCING at the Northwest corner NW/4, thence  
 S00°54'11"E along the East line of said NW/4 a distance of 580.07 feet to the POINT OF BEGINNING, thence:

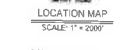
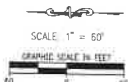
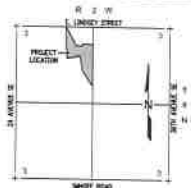
1. N13°56'16"W a distance of 686.36 feet, thence
2. N89°58'42"W a distance of 508.18 feet, thence
3. S40°08'12"W a distance of 417.85 feet, thence
4. S00°42'26"W a distance of 323.88 feet, thence
5. N00°47'26"W a distance of 120.04 feet, thence
6. N89°23'34"E a distance of 6.62 feet, thence
7. N00°47'48"W a distance of 171.20 feet, thence
8. N89°54'48"W a distance of 33.81 feet, thence
9. N00°08'12"E a distance of 726.54 feet to a point on the North line of said NW/4, thence

10. S27°29'37"E a distance of 729.74 feet, thence
11. N89°58'29"E a distance of 222.93 feet, thence
12. N00°01'32"W a distance of 77.49 feet, thence
13. N89°58'29"E a distance of 110.00 feet, thence
14. S02°01'32"E a distance of 10.00 feet, thence
15. N89°58'29"E a distance of 249.88 feet to the POINT OF BEGINNING.

Said tract contains 776,968 Sq Ft or 17.84 Acres, more or less.

CURVE TABLE					LINE TABLE			
CURVE #	LENGTH	RADIUS	DELTA	CHORD DIRECTION	CHORD LENGTH	LINE #	LENGTH	DIRECTION
C1	183.84	52.00	170°19'10"	N7°04'58"W	103.99	L1	10.00	S00°01'32"E
C2	36.88	35.00	06°02'24"	S49°56'49"W	35.20	L2	27.98	S89°12'34"W
C3	11.68	79.00	00°04'22"	S88°48'22"W	11.07	L3	0.62	N89°12'34"E
C4	181.62	52.00	230°07'03"	S62°40'18"W	102.40	L4	32.81	N89°51'48"W
C5	28.34	35.00	046°23'50"	N23°10'23"E	27.57	L5	25.00	N7°50'34"W
						L6	21.18	S0°12'34"W

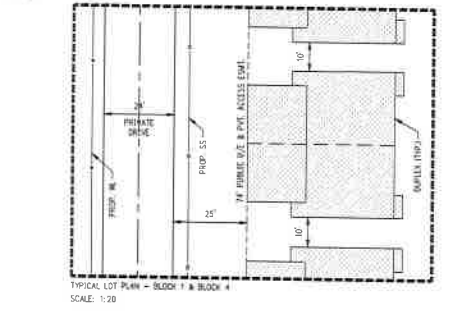
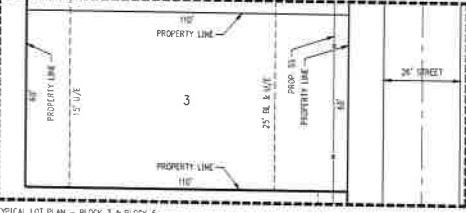
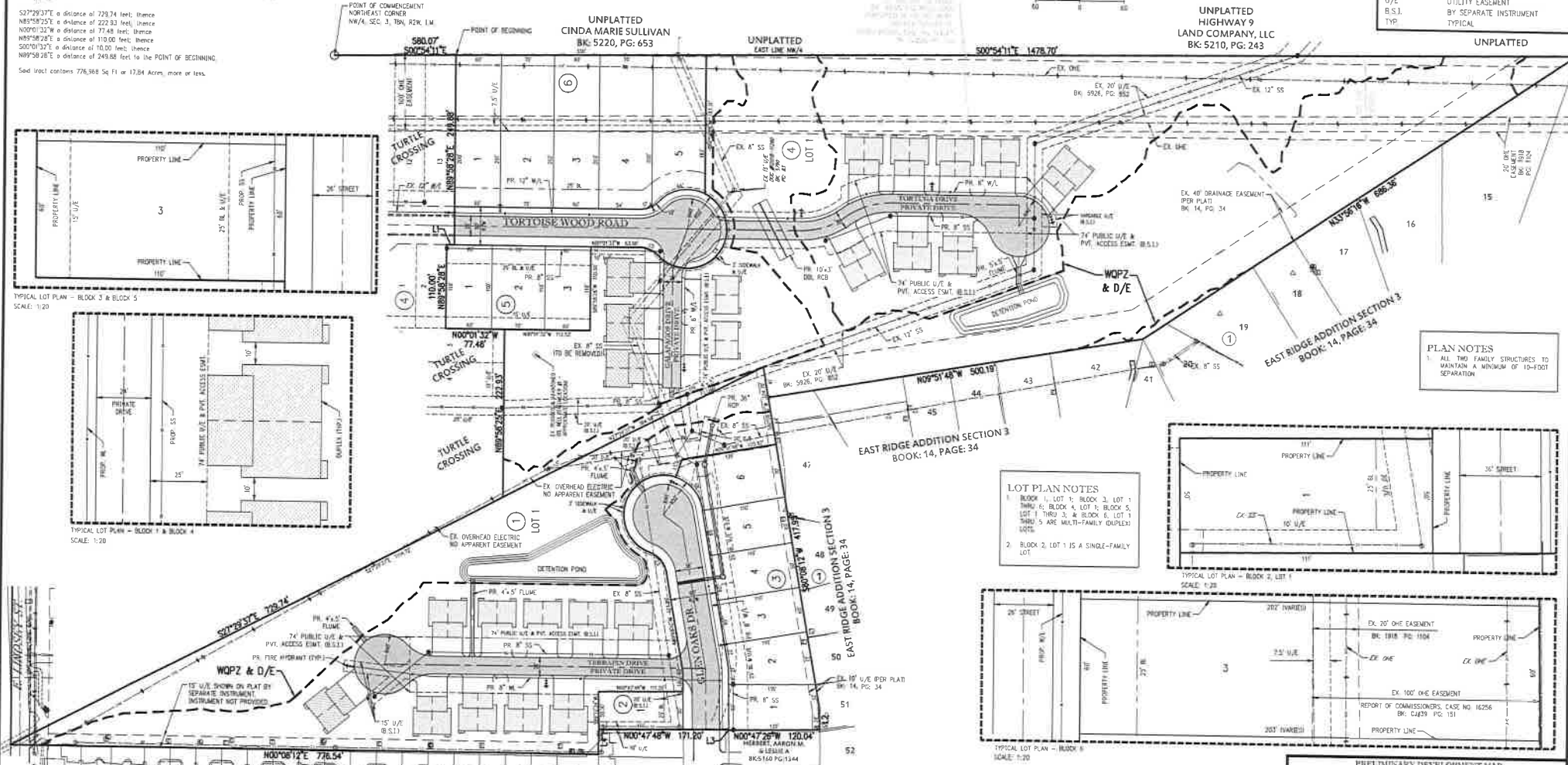
PRELIMINARY DEVELOPMENT MAP  
 OF  
**TURTLE CROSSING**  
 A Part of the NW/4 of Section 3, T8N, R2W, I.M.  
 Norman, Cleveland County, Oklahoma



PROJECT OWNER AND DEVELOPER:  
 Hussein Forzaneh  
 PO Box 720088  
 Norman, Oklahoma  
 73070  
 PH: 405.692.2222  
 FAX: 405.793.6024

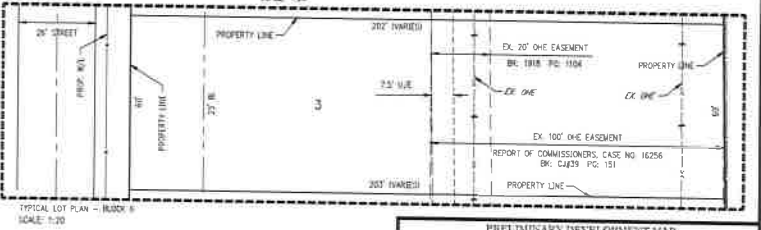
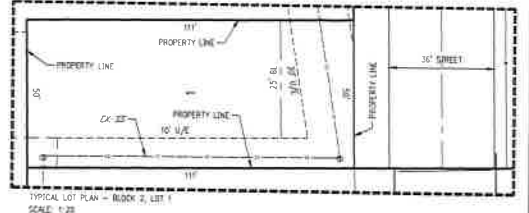
**LEGEND**

BL	BUILDING LIMIT LINE
D/E	DRAINAGE EASEMENT
EX	EXISTING
L.N.A	LIMITS OF NO ACCESS
R/W	RIGHT-OF-WAY
U/E	UTILITY EASEMENT
B.S.I.	BY SEPARATE INSTRUMENT
TYP.	TYPICAL



**LOT PLAN NOTES**

1. BLOCK 1, LOT 1; BLOCK 3, LOT 1 THRU 5; BLOCK 4, LOT 1; BLOCK 5, LOT 1 THRU 3; & BLOCK 6, LOT 1 THRU 5 ARE MULTI-FAMILY DUPLEX LOTS.
2. BLOCK 2, LOT 1 IS A SINGLE-FAMILY LOT.



**PLAN NOTES**

1. ALL TWO FAMILY STRUCTURES TO MAINTAIN A MINIMUM OF 10-FOOT SEPARATION.

PRELIMINARY DEVELOPMENT MAP  
**TURTLE CROSSING - EXHIBIT B**

**Craffon Tull**  
 CIVIL ENGINEERING & SURVEYING  
 405.727.2222

SHEET NO: 1 of 1  
 DATE: 02/26/2021  
 PROJECT NO: 216022-00