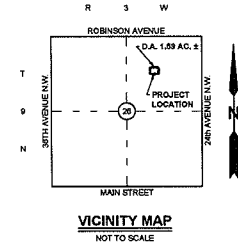
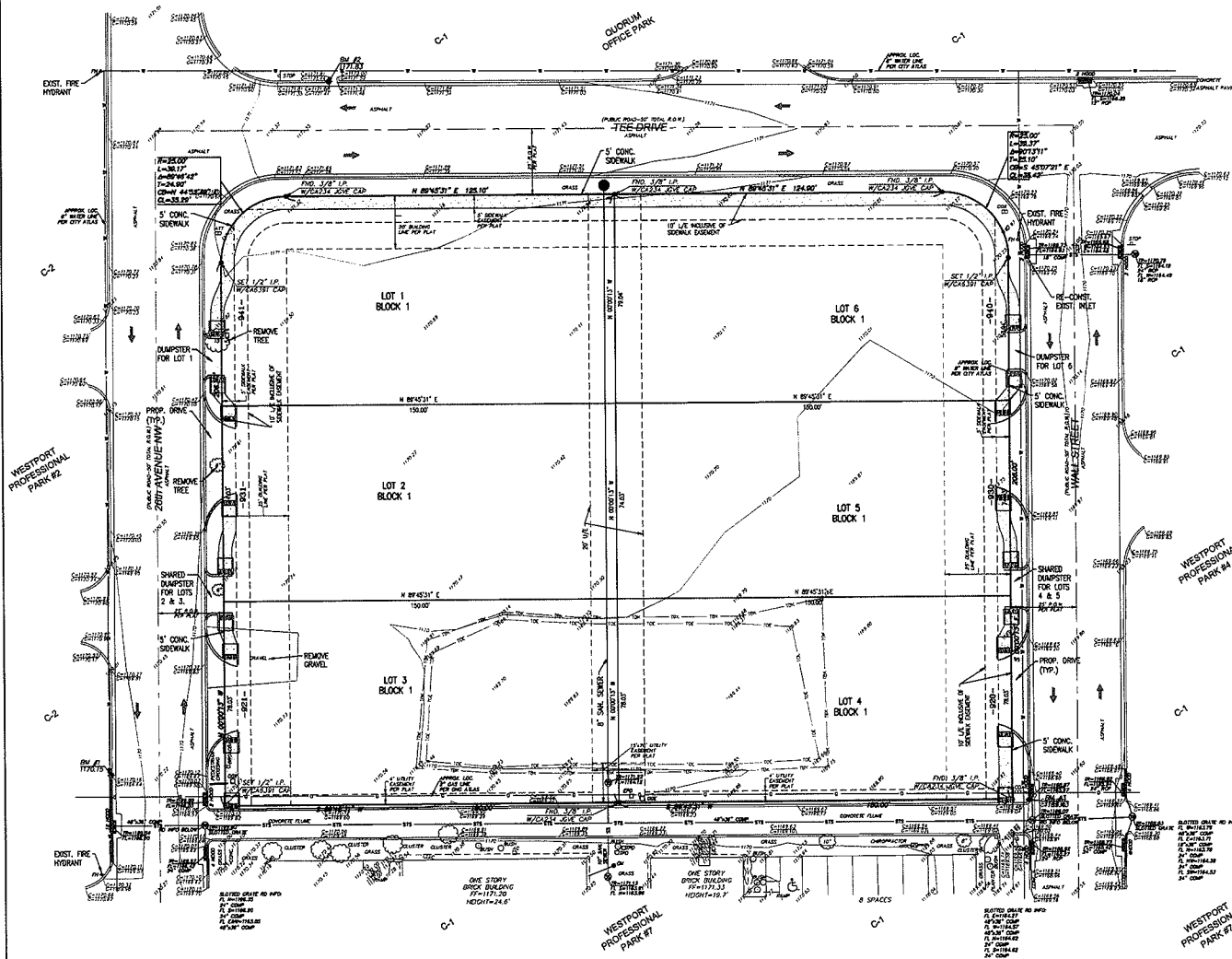


PRELIMINARY PLAT
A REPLAT OF LOTS 1 AND 2, BLOCK 14,
WESTPORT PROFESSIONAL PARK SECTION FOUR
A PART OF THE N.E. 1/4, SECTION 26, T9N, R3W I.M.
NORMAN, CLEVELAND COUNTY, OKLAHOMA



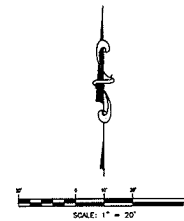
LEGAL DESCRIPTION

LOT 1 AND LOT 2, BLOCK 14, WESTPORT PROFESSIONAL PARK SECTION 4, NORMAN, CLEVELAND COUNTY, OKLAHOMA ACCORDING TO THE RECORDED PLAT THEREOF.

NOTES:

1. ALL PUBLIC UTILITIES SHALL BE IN A DEDICATED EASEMENT.
2. ALL SANITARY SEWER SHALL BE 8", UNLESS OTHERWISE NOTED.
3. EXISTING ZONING IS C-1.
4. LANDSCAPING WILL MEET OR EXCEED NORMAN ORDINANCES.
5. THE SITE PLAN IS CONCEPTUAL. FINAL FIRE PROTECTION WATER LINES WILL BE DESIGNED, IF NECESSARY, AT SUBMISSION OF BUILDING PERMIT FOR EACH LOT.
6. IF THE BUILDINGS REQUIRE SPRINKLER PROTECTION THE DISTANCE BETWEEN THE FDC AND THE NEAREST HYDRANT SHALL BE LIMITED BASED ON THE MOUNTING LOCATION.
7. LOT LINE ADJUSTMENT NO. 1334 FILED OF RECORD OCTOBER 17, 2007, DOC # 8 2007 46887 OK. NS 4412 PG. 53-67, FOR ALL PURPOSES, IT CREATES ONE LOT.

-1000- ADDRESSES



BENCHMARK - BM 1	BENCHMARK - BM 2	BENCHMARK - BM 3
117015	117183	116943
LOT "C" ON TOP OF CURB	LOT "C" ON TOP OF CURB	LOT "C" ON TOP OF CURB
N. SIDE OF 26th AVENUE N.W.	N. SIDE OF TEE DRIVE	N. SIDE OF WALL STREET
N. OF S.W. PROPERTY CORNER	N. OF N.W. PROPERTY CORNER	E. OF S.E. PROPERTY CORNER

© SMC CONSULTING ENGINEERS, P.C. ALL RIGHTS RESERVED. THESE DOCUMENTS MAY NOT BE USED FOR ANY PURPOSES WITHOUT PRIOR WRITTEN PERMISSION FROM SMC CONSULTING ENGINEERS, P.C.

OWNER/DEVELOPER:
CITY OF NORMAN
550 OLIVE OAK CT.
NORMAN, OK 73069
PH: (405) 623-8463

A REPLAT OF LOTS 1 AND 2, BLOCK 14,
WESTPORT PROFESSIONAL PARK SECTION FOUR

26th AVENUE N.W. & TEE DRIVE
NORMAN, OKLAHOMA

SMC
SMC Consulting Engineers, P.C.
1100 N. 17th Street, Suite 200
Norman, Oklahoma 73069
Phone: (405) 623-8463
Fax: (405) 623-8464
E-Mail: info@smc-engineers.com

PROJECT NO. 53362
DATE: 08/04/15
SCALE: 1" = 80'
DRAWN BY: RMC
CHECKED BY: L. BACKER
P.E. NUMBER: 13415

PRELIMINARY PLAT

SHEET NO.
1