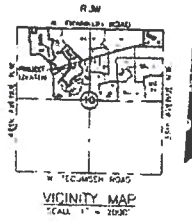
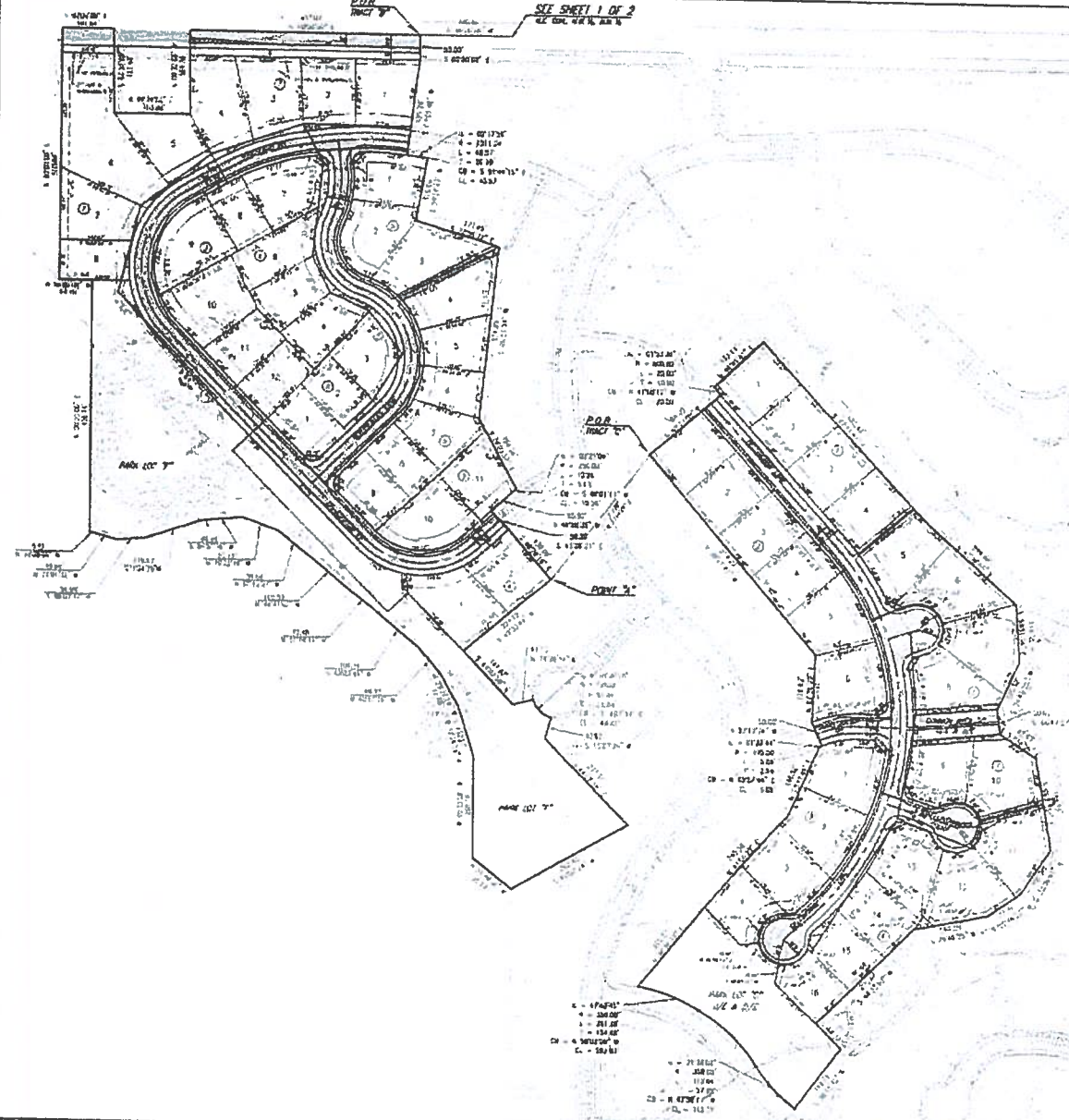


SEE SHEET 1 OF 2
 C.K. DIST. 24 N. 24 E. 24

PRELIMINARY PLAT
CARRINGTON PLACE ADDITION
 A PART OF THE N.W. 1/4, SECTION 10, T9N, R3W, I.M.
 NORMAN, CLEVELAND COUNTY, OKLAHOMA



APPROVED FOR RECORDING
 BY THE DEPARTMENT OF REVENUE
 OKLAHOMA

ENGINEER
 CARRINGTON PLACE, L.L.C.
 1201 N. PORTER AVE
 NORMAN, OK 73069
 PH (405) 241-1111



CARRINGTON PLACE
 ADDITION SECTION 14
 FRANKLIN RD. & 36th AVE. N.W.
 NORMAN, OKLAHOMA

SMC
 Soil Mapping & Construction, P.C.
 1117 S. W. 10th St. #102
 Norman, Oklahoma 73069
 PH: 405-241-1111

PREPARED AND FILED BY:
 DATE:
 FILED IN:
 PUBLIC RECORDS & SURVEYS
 CIVIL ENGINEER