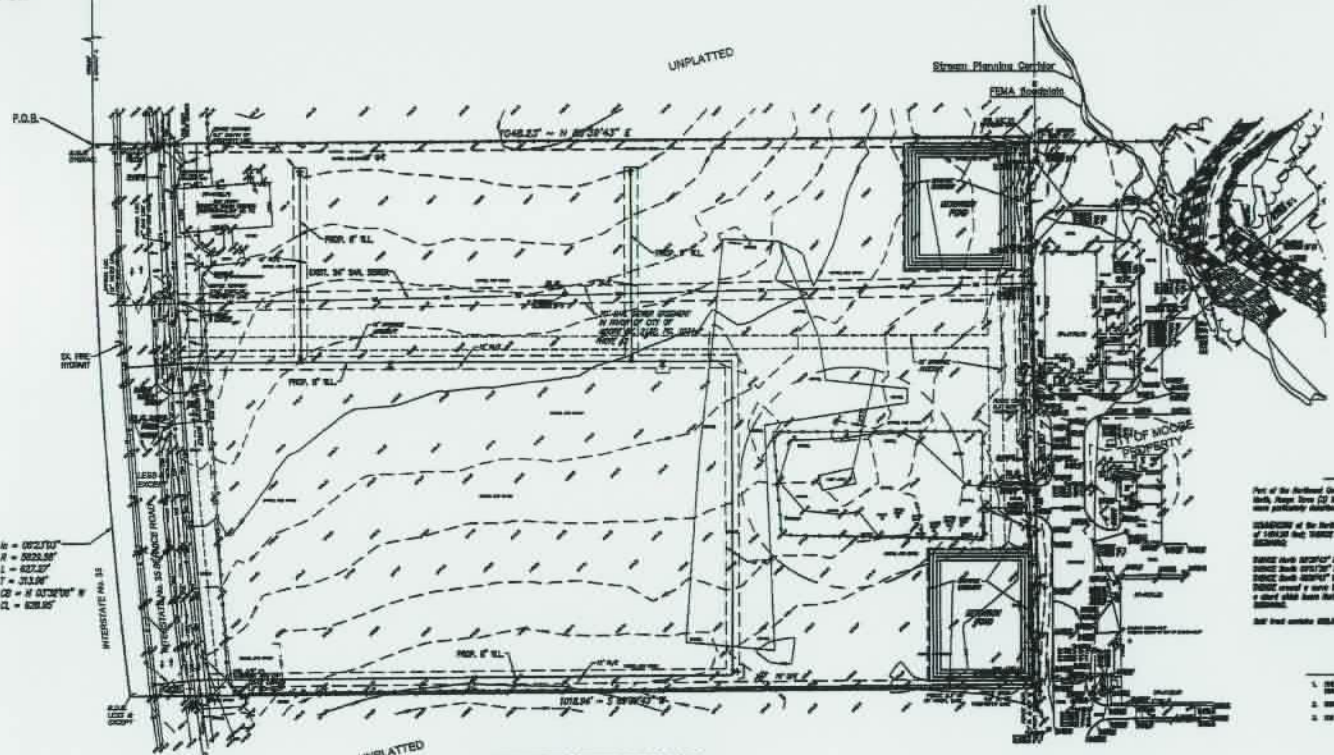


PRELIMINARY PLAT
EVANS ENTERPRISES ADDITION
 A PART OF THE N.W. 1/4 OF SECTION 35, T10N, R3W, L.M.
 NORMAN, CLEVELAND COUNTY, OKLAHOMA



P.O.C.
 P.E. W.P. OR
 A.E. LONER
 A.E. QUARTER
 SECTION 35
 T.10N. R.3W. L.M.



$h = 012.110'$
 $R = 3829.88'$
 $L = 822.27'$
 $T = 313.00'$
 $Q1 = N 02.2010' W$
 $Q2 = 828.82'$

INTERSTATE No. 35

LEGAL DESCRIPTION
 Part of the North-East Quarter (NE 1/4) of Section 35, Township 10N, Range 3W, L.M. 35, Cleveland County, Oklahoma, more particularly described as follows:
 COMMENCE at the North-East corner of said NE 1/4, THENCE North 89°20'00" East a distance of 1000.00 feet; THENCE South 89°20'00" East a distance of 1000.00 feet to the POINT OF BEGINNING.
 THENCE South 89°20'00" East a distance of 1000.00 feet;
 THENCE South 89°20'00" East a distance of 1000.00 feet;
 THENCE South 89°20'00" East a distance of 1000.00 feet to a point on a non-adjacent corner;
 THENCE curved a curve to the S.W. having a radius of 1000.00 feet (said curve subtended by a chord which bears North 89°20'00" East a distance of 1000.00 feet to the POINT OF BEGINNING.
 Said tract contains 100.0000 acres that or 142.27 acres, more or less.

- NOTES**
1. ALL WORK SHALL BE DONE AND APPROVED BY THE CITY ENGINEER.
 2. WORK SHALL BE DONE IN ACCORDANCE WITH THE CITY ENGINEER'S SPECIFICATIONS.
 3. THE WORK SHALL BE DONE IN ACCORDANCE WITH THE CITY ENGINEER'S SPECIFICATIONS.

STORM WATERSHED DETENTION FACILITY FOOTPRINT

STORM WATERSHED DETENTION FACILITY FOOTPRINTS ARE HEREBY ESTABLISHED AS SHOWN TO PROVIDE FOR DETENTION OF STORM SURFACE WATER AND CONSTRUCTED AS APPROVED BY THE CITY ENGINEER. ALL MAINTENANCE FROM THE STORM WATERSHED DETENTION FACILITY FOOTPRINT SHALL BE THE SOLE DUTY AND RESPONSIBILITY OF THE PROPERTY OWNER(S) IN THE PART OF SAID ENTERPRISES ADDITION. MAINTENANCE IS INCLUDED OR EXCLUDED TO STORM WATERSHED DETENTION FACILITY AND IS DEEMED TO BE A MATTER OF PUBLIC SAFETY BY THE CITY ENGINEER. CORRECTIVE MAINTENANCE MAY BE PERFORMED BY THE CONTRACTOR ASSIGNED WITH CONSTRUCTION TO AND BORN UPON SAID PROPERTY OWNER(S). OFFICIALS REPRESENTING THE ENGINEERING DIVISION, PUBLIC WORKS DIVISION, SHALL HAVE THE RIGHT TO ENTER UPON THE FACILITY FOR PURPOSES OF PERIODIC INSPECTION AND/OR CORRECTIVE MAINTENANCE OF THE FACILITY. UPON RECEIVING WRITTEN APPROVAL FROM THE ENGINEERING DIVISION, PUBLIC WORKS DIVISION, PROPERTY OWNER(S) MAY CONDUCT IMPROVEMENTS WITHIN THE FOOTPRINT, PROVIDED THE IMPROVEMENT DOES NOT INTERFERE WITH THE FUNCTION OF THE DETENTION FACILITY.

S.M.C. ENGINEERING, P.C.
 1000 WESTERN BLVD.
 SUITE 100
 NORMAN, OKLAHOMA 73069
 (405) 824-1111

OWNER / DEVELOPER
 EVANS ENTERPRISES INC.
 1000 WESTERN BLVD.
 SUITE 100
 NORMAN, OK 73069

DESIGNED BY
 S.M.C. ENGINEERING, P.C.
 1000 WESTERN BLVD.
 SUITE 100
 NORMAN, OK 73069
 (405) 824-1111

OKLAHOMA REGISTERED PROFESSIONAL ENGINEER
 No. 10000
 S.M.C. ENGINEERING, P.C.
 1000 WESTERN BLVD.
 SUITE 100
 NORMAN, OK 73069

EVANS ENTERPRISES ADDITION
6707 INTERSTATE DR.
NORMAN, OKLAHOMA

SMC
 S.M.C. ENGINEERING, P.C.
 1000 WESTERN BLVD.
 SUITE 100
 NORMAN, OK 73069
 (405) 824-1111

PRELIMINARY PLAT
 SHEET NO. 1