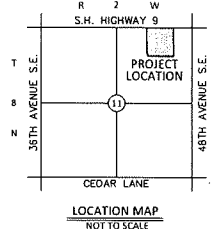
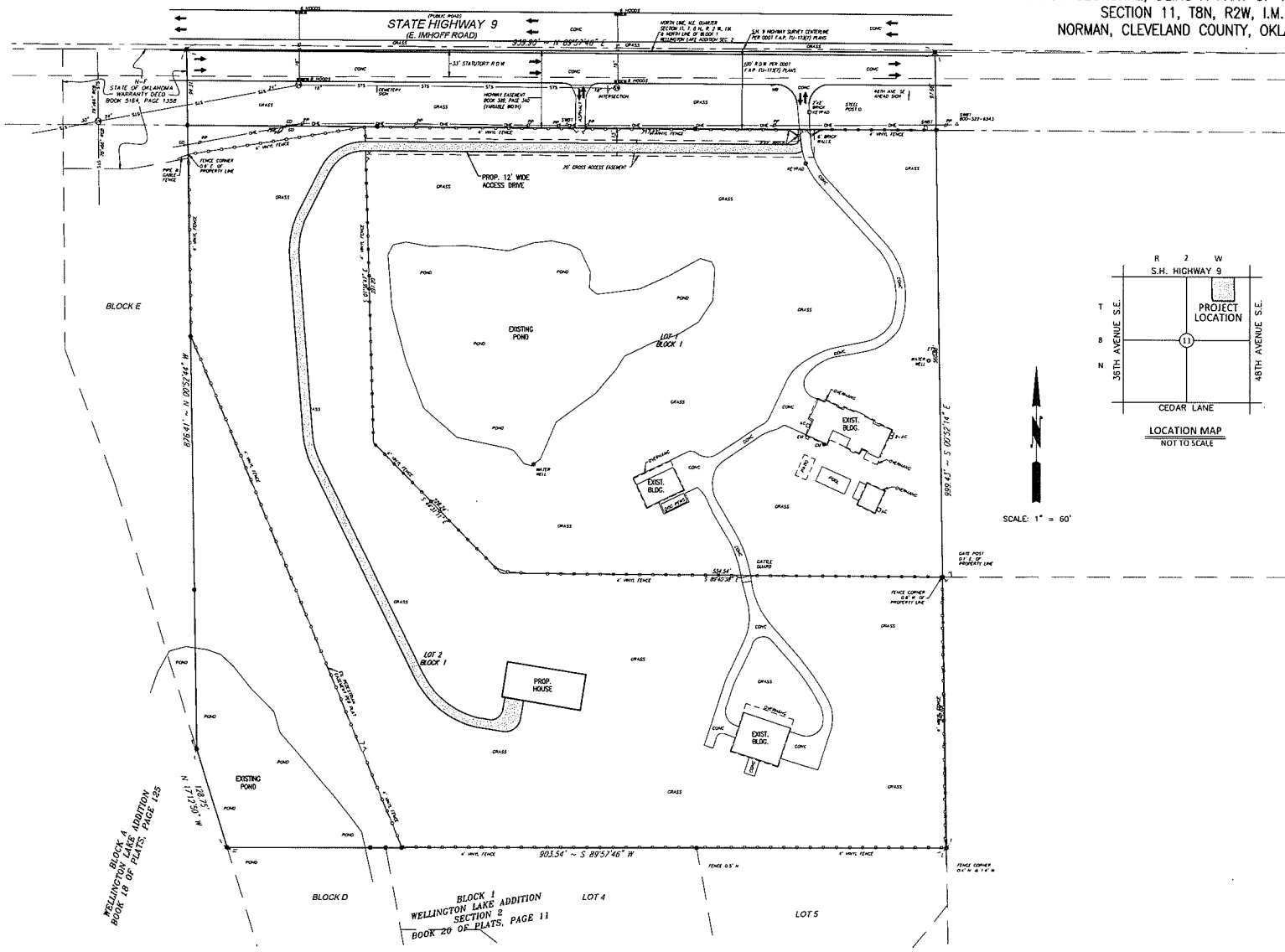


SITE PLAN
PM ADDITION
A REPLAT OF LOT 14, BLOCK 1 OF WELLINGTON LAKE
ADDITION SECTION 2, BEING A PART OF THE N.E. 1/4,
SECTION 11, T8N, R2W, I.M.
NORMAN, CLEVELAND COUNTY, OKLAHOMA



WELLINGTON LAKE ADDITION
BOOK 18 OF PLATS, PAGE 128

BLOCK 1
WELLINGTON LAKE ADDITION
SECTION 2
BOOK 20 OF PLATS, PAGE 11

© SMC CONSULTING ENGINEERS, P.C. ALL RIGHTS RESERVED THESE DOCUMENTS ARE NOT TO BE USED FOR ANY PURPOSES WITHOUT PRIOR WRITTEN PERMISSION FROM SMC CONSULTING ENGINEERS, P.C.

OWNER / DEVELOPER
Pepper, L. & Kalle Martin
4000 E. Highway 9
Norman, Oklahoma 73065

ENGINEER
SMC Consulting Engineers, P.C.
815 W. Main Street
Oklahoma City, Oklahoma 73106

PM ADDITION

38th AVE. S.E. & HWY. 9
NORMAN, OKLAHOMA

SMC
SMC CONSULTING ENGINEERS, P.C.
1111 N. W. 10th Street
Oklahoma City, Oklahoma 73106
P.O. Box 10000
Oklahoma City, Oklahoma 73153
PHONE: (405) 241-1111
FAX: (405) 241-1112
WWW: www.smce.com

PROJECT NO. 181200
DATE: 06/22/2011
SCALE: 1" = 60'
DRAWN BY: JAC
ENGINEER: P.C. HANCOCK

SITE PLAN

SHEET NO.
1