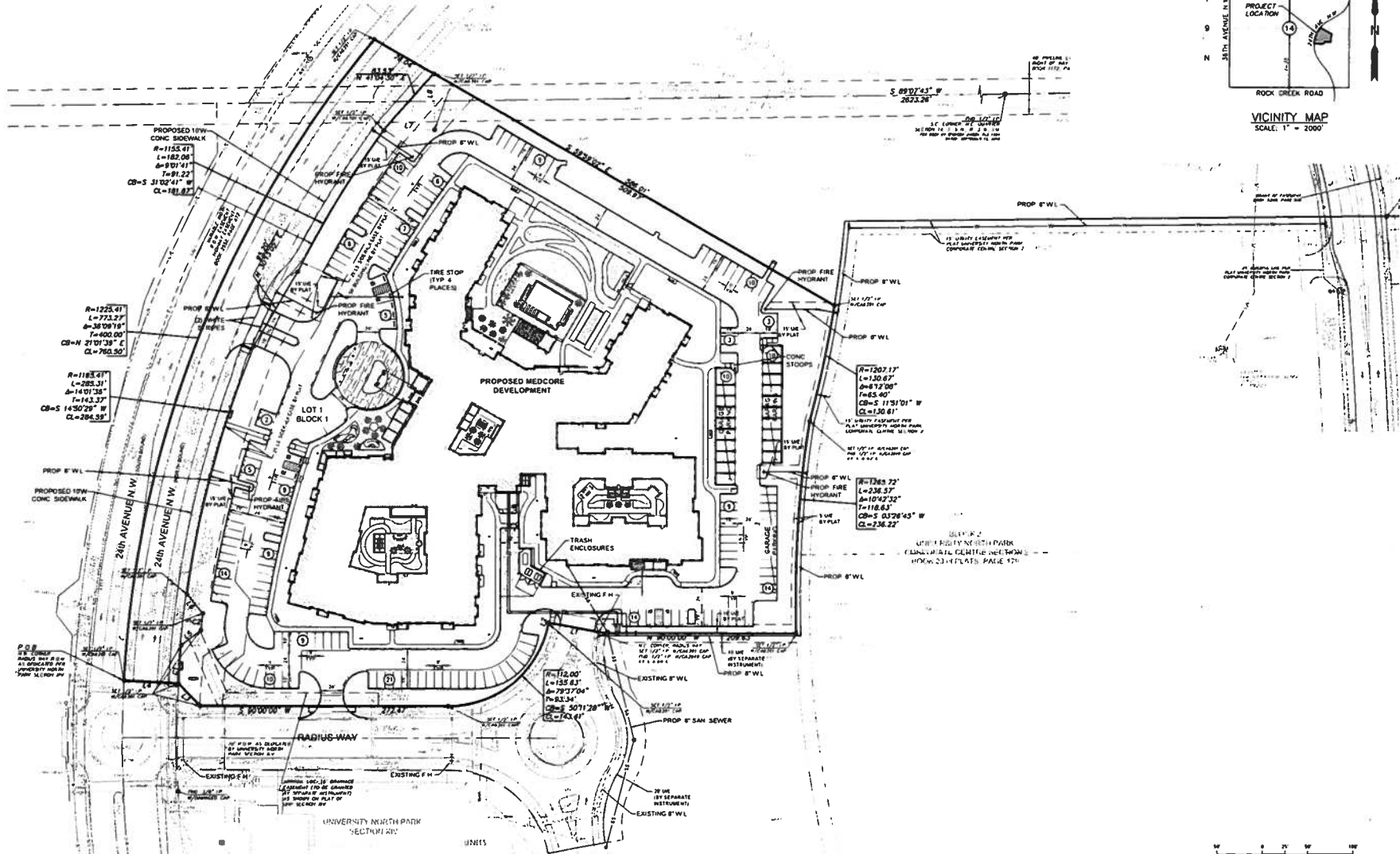
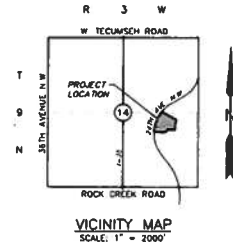


FINAL SITE DEVELOPMENT PLAN
UNIVERSITY NORTH PARK SECTION XVI
 A PLANNED UNIT DEVELOPMENT
 A PART OF THE E. 1/2, SECTION 14, T9N, R3W, I.M.
 NORMAN, CLEVELAND COUNTY, OKLAHOMA



I, THE ENGINEER, HEREBY CERTIFY THAT I AM A LICENSED PROFESSIONAL ENGINEER IN THE STATE OF OKLAHOMA AND THAT I AM THE DESIGNER OF THE ABOVE DESCRIBED PROJECT AND THAT I AM A MEMBER OF THE PROFESSIONAL ENGINEERS SOCIETY OF OKLAHOMA.

UNIVERSITY NORTH PARK SECTION XVI
RADIUS WAY & 24TH AVE. N.W.
NORMAN, OKLAHOMA

SMC
 Consulting Engineers, P.C.
 1100 N. UNIVERSITY BLVD., SUITE 200
 NORMAN, OKLAHOMA 73069
 PHONE: (405) 831-7111 FAX: (405) 831-7110
 LICENSE NO. 11577-0017 ENGINEER P.E. STATE OF OKLAHOMA

PROJECT NO. 18717-18
 DATE: 02/21/18
 SCALE: 1"=50'
 SHEET NO. 18717-18-01
 TOTAL SHEETS: 18717-18-01
 DRAWN BY: [Name]
 CHECKED BY: [Name]
 APPROVED BY: [Name]

FINAL SITE DEVELOPMENT PLAN

SHEET NO. 18717-18-01