

Liebert® NX™

UPS Power Solution for Small and Medium Data Centers



Rapid and unpredictable growth in fast-paced data centers makes it challenging to protect critical network equipment and other electronic components. Liebert NX with Softscale™ is the solution.

Liebert NX with Softscale is a true on-line, double conversion, three-phase UPS that delivers complete, centralized power protection for mission-critical systems. Designed to meet the high availability power needs of a wide variety of IT applications, this power solution delivers advanced operating features and low cost of ownership.

Ideal Applications

- Small to mid-size data centers (10-30 racks)
- High density blade deployments
- High performance clusters
- IT systems experiencing unpredictable change

Key benefits

Flexibility

- Solution provides UPS, matching battery cabinet and bypass/distribution cabinet, enabling fast and reliable powering of new racks and growing computing loads
- Softscale technology allows increased UPS capacity without changes to your infrastructure
- Easily add matching battery cabinets for greater runtime
- Compatible with the Liebert FS Flywheel Solution for use with or in place of traditional batteries
- UPS modules can be paralleled for capacity and/or redundancy with the optional paralleling cabinet

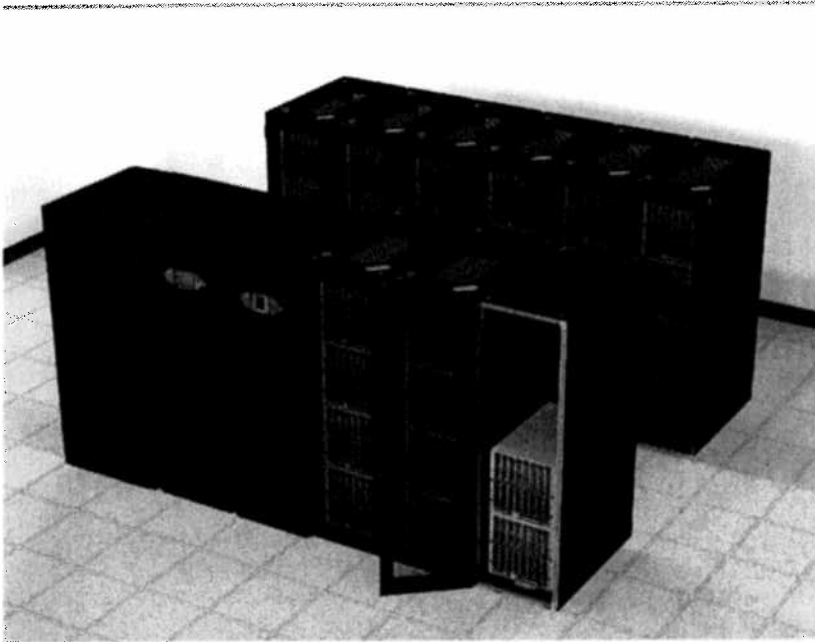
Higher Availability

- True on-line double conversion UPS ensures reliable, clean power for sensitive IT equipment
- Built-in internal bypass and wrap around maintenance bypass allows preventive maintenance and service without having to power down IT loads
- Advanced Ntegrated Monitoring from Liebert Services provides 24x7x365 proactive diagnostics and trending analysis to track unit health and capacity
- 1 year full parts and labor warranty features 24 hour on-site service provided by the largest and most experienced service organization in the industry

Lowest Total Cost of Ownership

- Eco-Mode high efficiency configuration (up to 97%) saves on energy spending
- Soft-switching technology enables the same high efficiency at 40% utilization as at 100% utilization
- Digital signal processor control technology increases reliability through reduced component count while enhancing efficiency and waveform accuracy to maximize operating life of sensitive IT equipment

Liebert NX UPS System is the Right Solution for Growing Data Centers



The Liebert NX UPS System combines leading edge technology, matched system components, an easy ordering process, and unsurpassed support. The result is a solution that perfectly powers growing data centers.

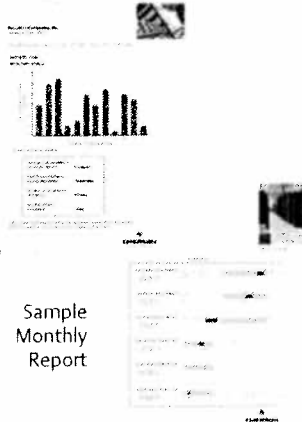
Support from Installation Through Operation

Installation, Maintenance, Service and Reporting from Emerson Network Power factory-trained service professionals – your assurance that Liebert NX operates reliably.

One Year Free Service with Ntegrated Monitoring from Liebert Services

Ntegrated Monitoring from Liebert Services incorporates advanced monitoring and leading network security to provide an integrated approach to alarm management, equipment maintenance and emergency service response.

- 24x7x365 proactive remote diagnostic and trend analysis to track unit health and capacity
- Centralized monitoring by the Liebert Services High Availability Response Center (HARC) with service dispatch to diagnose and respond to potential problems
- Combined remote and on-site service
- Easy to read monthly electronic health reports



Liebert NX UPS
On-line, double conversion UPS with Softscale™ technology allows you to pay for only the capacity you need today; as your needs change, a simple software upgrade allows you to grow from 40kVA to 60kVA to 80kVA; or from 80kVA to 100kVA to 120kVA.



Liebert NX Bypass Distribution
Matching cabinet bolts directly to right side of the UPS. It features a keyed interlocked bypass breaker, optional voltage transformation and output distribution with panelboards or sub-feed breakers.



Liebert NX Battery Cabinet
Valve Regulated Lead Acid (VRLA) batteries provide mission critical back up. High reliability features include 10-year design life batteries with flame retardant cases, factory installed battery circuit breaker protection, and optional Alér battery monitoring for early warning detection of battery problems.



Liebert NX UPS Paralleling Cabinet
Increase UPS capacity or add redundancy with the addition of the NX Paralleling Cabinet. Parallel up to three UPS modules for capacity, and add a fourth for redundancy.

A Complete Power Solution that grows with IT loads

Selecting a Liebert NX System:



Determine the total IT load to be supported by the UPS

Add up the kVA/kW requirements of your racks and select a UPS model with a rating greater than the total. Select a higher rating to allow for growth, while keeping in mind that you have the built-in flexibility to upgrade to the maximum Softscale capacity after installation. Models are available with a Softscale capacity of 80kVA or 120kVA.



Confirm availability of 480VAC power to the UPS

480V power is required for the Liebert NX System.



Confirm where you will be locating your UPS, batteries and PDU on site

Recommended configuration is: Battery Cabinet(s), UPS, BDU. Inter-unit cabling is provided for this configuration only. Cabling from the PDU to load is user-supplied

The UPS and batteries require only front access and can be located either in the rack row, against a wall, or in an adjacent room. The PDU requires both front and rear access and is recommended to be located close to the load.



Determine your battery runtime requirement at full load. For more runtime, add additional battery cabinets to your order:

UPS Description	Base Runtime (Minutes)	Battery Cabinets for Base Runtime	+1 Cabinet (Minutes)	+2 Cabinets (Minutes)	+3 Cabinets (Minutes)
40kVA (40-80 model)	20	One (1)	45	72	101
60kVA (40-80 model)	11	One (1)	28	46	64
80kVA (40-80 model)	7	One (1)	20	34	45
80kVA (80-120 model)	20	Two (2)	34	45	N/A
100kVA (80-120 model)	15	Two (2)	25	35	N/A
120kVA (80-120 model)	12	Two (2)	21	30	N/A



Order your Liebert NX

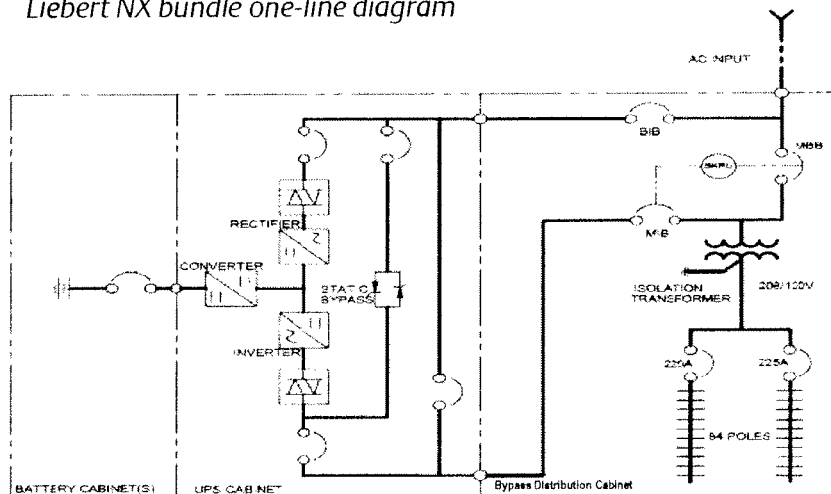
If you need additional configuration assistance, work with your Dell sales team to engage a local Liebert sales consultant or call 1-800-LIEBERT.

Liebert NX Model Selection Chart						
UPS Capacity	40kVA / 36kW	60kVA / 54kW	80kVA / 72kW	80kVA / 72kW	100kVA / 90kW	120kVA / 108kW
Maximum Softscale Capacity of UPS	80kVA / 72kW	80kVA / 72kW	80kVA / 72kW	120kVA / 108kW	120kVA / 108kW	120kVA / 108kW
PDU Capacity	75kW	75kW	75kW	125kW	125kW	125kW
Power Input to UPS	480VAC	480VAC	480VAC	480VAC	480VAC	480VAC
Power Output to Load	120/208VAC	120/208VAC	120/208VAC	120/208VAC	120/208VAC	120/208VAC
Required Breaker Size	175A	175A	175A	250A	250A	250A
Floor Space Requirement in Rack Widths (Battery/UPS/PDU)	3.5	3.5	3.5	5	5	5
Base Runtime (Minutes)	20	11	7	20	15	12
Dell NX UPS Bundle SKU	A2206257	A2206258	A2206259	A2206260	A2206261	A2206262
Extra Battery Cabinet SKU	A2206264	A2206264	A2206264	A2206264	A2206264	A2206264

Liebert NX System Specifications

Liebert NX Power System						
System Rating - kVA (kW)	40 (36)	60 (54)	75 (72)	80 (72)	100 (90)	120 (108)
Maximum Softscale Capacity - kVA (kW)	75 (72)			120 (108)		
General Specifications						
UPS Technology	On-line, double conversion					
Battery Technology	Non-Spillable, Flame Retardant, Valve Regulated Battery, 10-Year Design Life					
Input AC Specifications						
Power Factor	>0.99 at full load, >0.98 at half load					
Nominal Input Voltage - VAC	480, 3 wire + ground					
Input Voltage Range - VAC	552 - 360 (+15%, -25%)					
Frequency - Hz	60 nominal (57-63)					
Input breaker size	175A	175A	175A	250A	250A	250A
Output AC Specifications						
Nominal Output Voltage - VAC	208 / 120, 4 wire + ground					
Frequency - Hz	60 +/- 0.5%					
Output Distribution	(Qty 2) 42-Pole Panelboards					
Physical Specifications						
System Dimensions (WxDxH) - in. (mm)	80.6 (2047) x 39.0 (991) x 78.5 (2000)			112.1 (2847) x 39.0 (991) x 78.5 (2000)		
UPS Dimensions (WxDxH) - in. (mm)	23.6 (600) x 39 (991) x 78.5 (2000)			23.6 (600) x 39 (991) x 78.5 (2000)		
Battery Dimensions (WxDxH) - in. (mm)	33.2 (845) x 39 (991) x 78.5 (2000)			66.4 (1690) x 39 (991) x 78.5 (2000)		
Bypass Distribution Dimensions (WxDxH) - in. (mm)	24.4 (620) x 39 (991) x 78.5 (2000)			24.4 (620) x 39 (991) x 78.5 (2000)		
Shipping Dimensions, Each Box (WxDxH) - in. (mm)	48 (1220) x 48 (1220) x 84.5 (2146)					
System Weight - lbs. (kg)	6030 (2735)			8312 (3770)		
UPS Weight - lbs. (kg)	1290 (585)			1422 (645)		
Battery Weight - lbs. (kg)	2620 (1188)			5240 (2376)		
PDU Weight - lbs. (kg)	1350 (612)			1650 (748)		
System Shipping Weight - lbs. (kg)	5860 (2658)			9112 (4133)		
UPS Shipping Weight - lbs. (kg)	1490 (676)			1622 (736)		
Battery Shipping Weight - lbs. (kg)	2820 (1280)			5640 (2560)		
PDU Shipping Weight - lbs. (kg)	1550 (703)			1850 (839)		
Monitoring Specifications						
UPS Monitoring	SNMP / Web Based Monitoring Card Included					
Distribution Monitoring	Local LED display of system output voltage and current					
Environmental Specifications						
Operating Temperature Range - °F (°C)	32 to 104 (0 to 40)					
Storage Temperature Range - °F (°C)	-4 to 104 (-20 to 70)					
Audible Noise - dB, A-weighted	<62			<64		
Safety Certification	UL 1778 (UPS) / UL 60950 (PDU)					
Product Support						
Warranty	1 Year, Full Parts and Labor					
Remote Monitoring	1 Year of Integrated Monitoring™ included free of charge. Option to renew with annual service contract.					

Liebert NX bundle one-line diagram



Liebert Corporation

1050 Dearborn Drive
P.O. Box 29186
Columbus, Ohio 43229
800 877 9222 Phone (U.S. & Canada Only)
614 888 0246 Phone (Outside U.S.)
614 841 6022 FAX

Via Leonardo Da Vinci 8
Zona Industriale Tognana
35028 Piove Di Sacco (PD)
Italy
39 049 9719 111 Phone
39 049 5841 257 FAX

Emerson Network Power Asia Pacific
7/F Dah Sing Financial Centre
108 Gloucester Road
Wanchai
Hong Kong
852 2572 2201 Phone
852 2519 9210 FAX

liebert.com

24 x 7 Tech Support
800 222 5877 Phone
614 841 6755 (outside U.S.)

While every precaution has been taken to ensure accuracy and completeness in this literature, Liebert Corporation assumes no responsibility, and disclaims all liability for damages resulting from use of this information or for any errors or omissions.
© 2009 Liebert Corporation. All rights reserved throughout the world. Specifications subject to change without notice. All names referred to are trademarks or registered trademarks of their respective owners.
® Liebert and the Liebert logo are registered trademarks of the Liebert Corporation.

VR-01449 (03/09) Printed in USA

Emerson Network Power.
The global leader in enabling
business-critical continuity.

- ✦ AC Power
- ✦ Connectivity
- ✦ DC Power
- ✦ Embedded Power
- ✦ Monitoring
- ✦ Outside Plant
- ✦ Power Switching and Controls
- ✦ Precision Cooling
- ✦ Racks and Integrated Cabinets
- ✦ Services
- ✦ Surge Protection

Emerson Network Power and the Emerson Network Power logo are trademarks and service marks of Emerson Electric Co.
©2009 Emerson Electric Co.