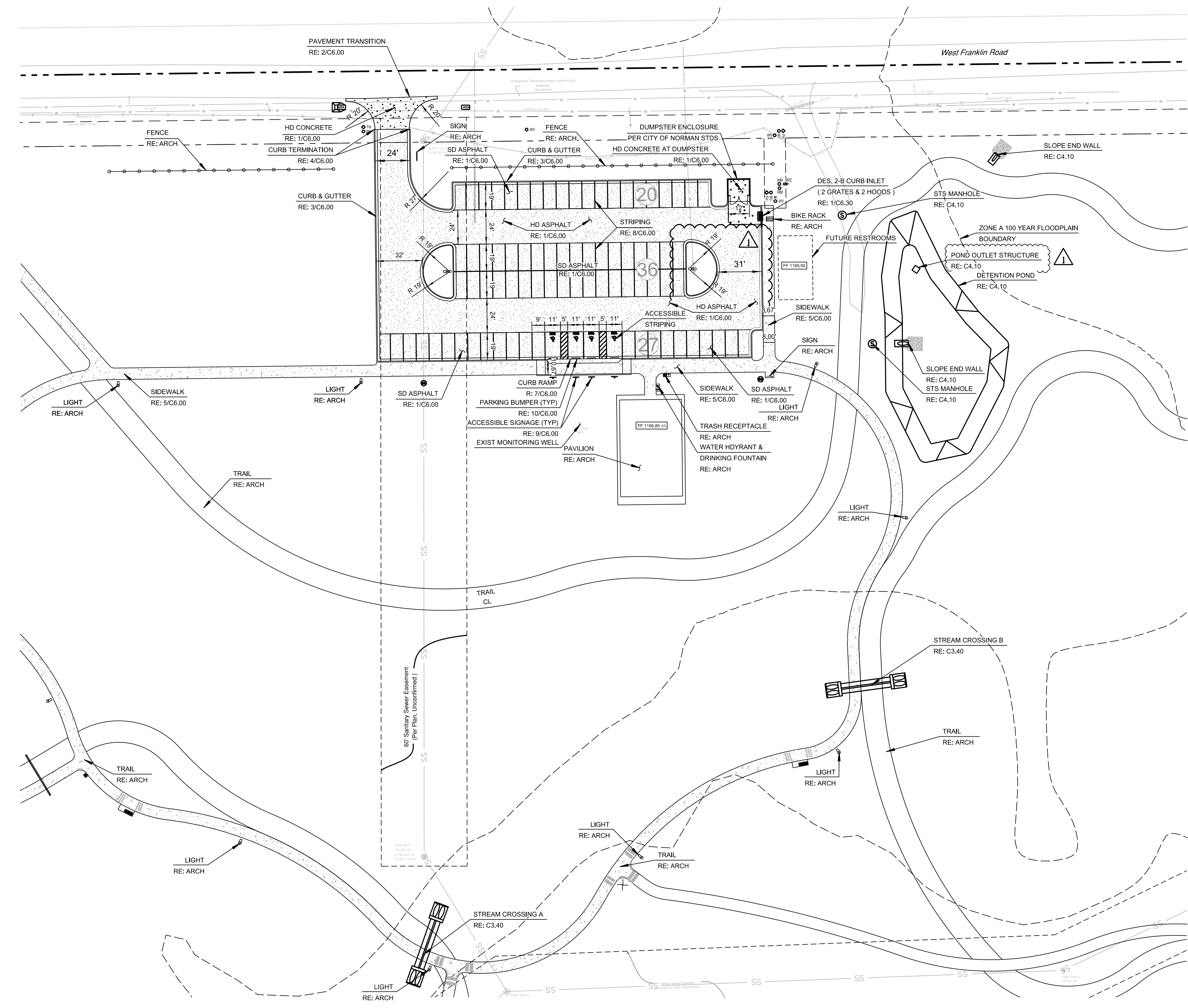


- GENERAL SITE NOTES
1. ALL WORK AND MATERIALS SHALL COMPLY WITH ALL MUNICIPAL REGULATIONS AND CODES, WHICHEVER IS MORE STRINGENT.
 2. ALL WORK AND MATERIALS SHALL COMPLY WITH O.S.H.A. STANDARDS.
 3. CONTRACTOR SHALL BE RESPONSIBLE FOR ALL RELOCATIONS, INCLUDING BUT NOT LIMITED TO, ALL UTILITIES, STORM DRAINAGE, SIGNS, TRAFFIC SIGNALS & POLES, ETC. AS REQUIRED. ALL WORK SHALL BE IN ACCORDANCE WITH GOVERNING AUTHORITIES SPECIFICATIONS AND SHALL BE APPROVED BY SUCH. ALL COST SHALL BE INCLUDED IN BASE BID.
 4. ALL DIMENSIONS AND COORDINATES ARE FROM BACK OF CURB UNLESS SHOWN OTHERWISE.
 5. RADII = 3'-00" U.N.O.
 6. BUILDING COORDINATES ARE TO OUTSIDE FACE OF WALL.

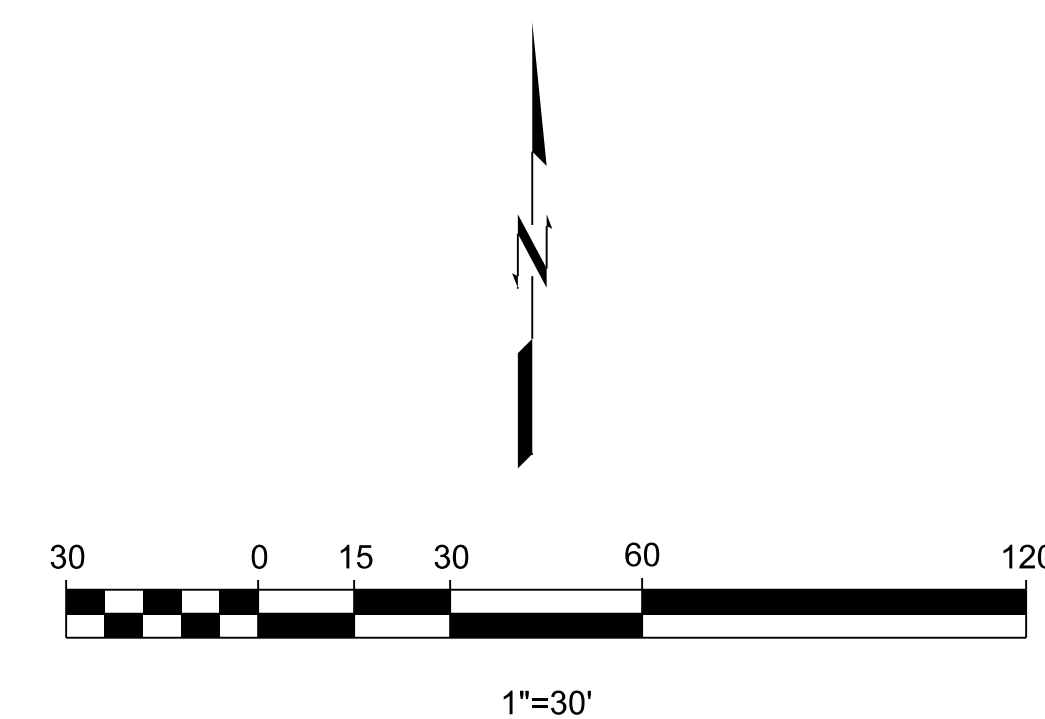
PARKING SUMMARY	
ADA VAN ACCESSIBLE	4
STANDARD PARKING	79
TOTAL PARKING	83



CAUTION
NOTICE TO CONTRACTOR

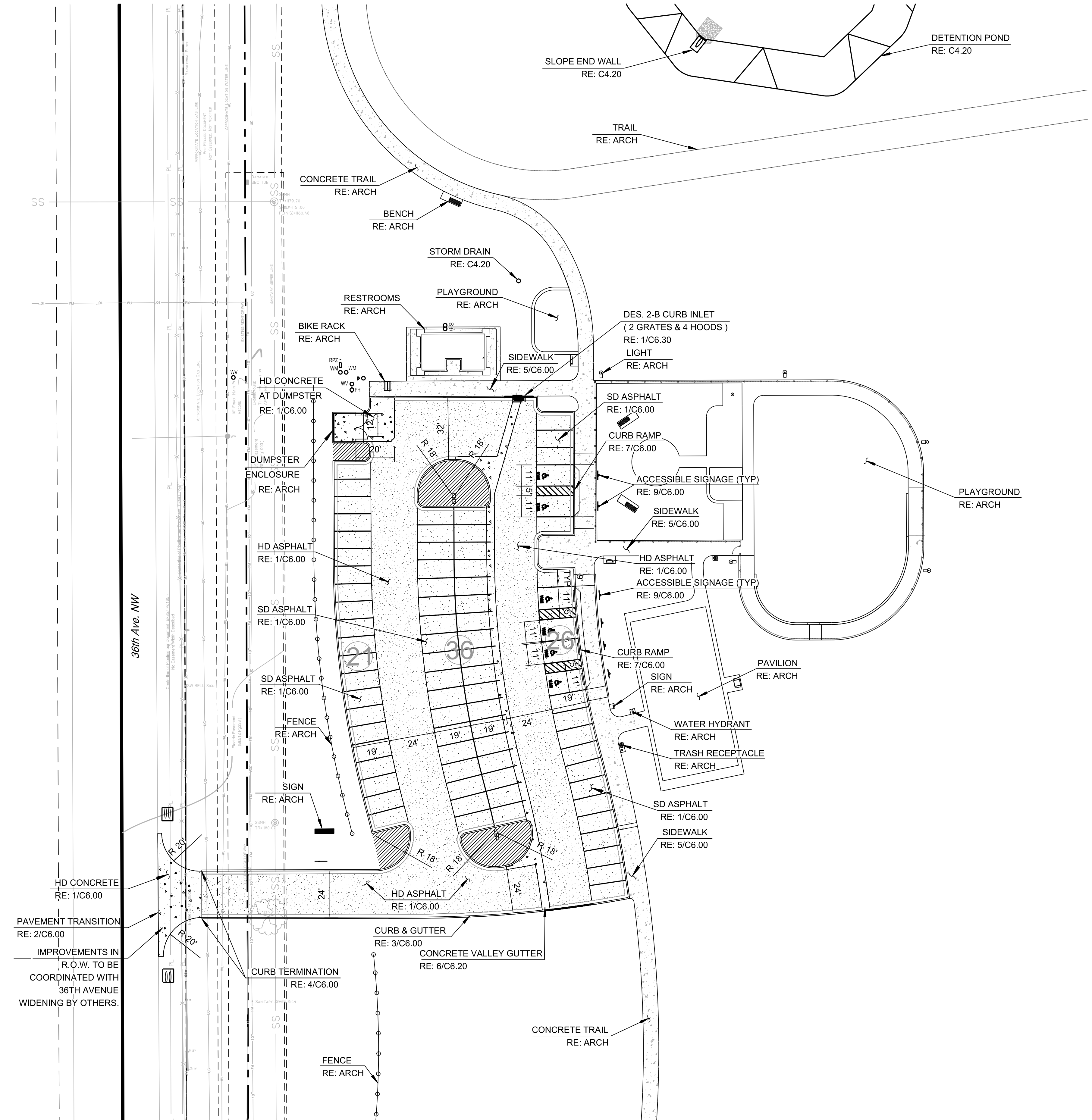
THE CONTRACTOR IS SPECIFICALLY CAUTIONED THE LOCATION AND ELEVATION OF EXISTING UTILITIES AS SHOWN ON THESE PLANS ARE BASED ON RECORDS OF THE VARIOUS UTILITY COMPANIES AND MEASUREMENTS TAKEN IN THE FIELD. THE INFORMATION IS NOT TO BE RELIED ON AS BEING EXACT OR COMPLETE. THE CONTRACTOR MUST CALL THE LOCAL UTILITY LOCATION CENTER AT LEAST 72 HOURS BEFORE ANY EXCAVATION TO REQUEST EXACT FIELD LOCATIONS OF THE UTILITIES

11:41:17 AM 7/11/2019 \\okse-server\chill\Projects\1880039 Ruby Grant Park Phase I\dgn\CO3_1Site.dgn



- GENERAL SITE NOTES
1. ALL WORK AND MATERIALS SHALL COMPLY WITH ALL MUNICIPAL REGULATIONS AND CODES, WHICHEVER IS MORE STRINGENT.
 2. ALL WORK AND MATERIALS SHALL COMPLY WITH O.S.H.A. STANDARDS.
 3. CONTRACTOR SHALL BE RESPONSIBLE FOR ALL RELOCATIONS, INCLUDING BUT NOT LIMITED TO, ALL UTILITIES, STORM DRAINAGE, SIGNS, TRAFFIC SIGNALS & POLES, ETC. AS REQUIRED. ALL WORK SHALL BE IN ACCORDANCE WITH GOVERNING AUTHORITIES SPECIFICATIONS AND SHALL BE APPROVED BY SUCH. ALL COST SHALL BE INCLUDED IN BASE BID.
 4. ALL DIMENSIONS AND COORDINATES ARE FROM BACK OF CURB UNLESS SHOWN OTHERWISE.
 5. RADII = 3'-00" U.N.O.
 6. BUILDING COORDINATES ARE TO OUTSIDE FACE OF WALL.

PARKING SUMMARY	
VAN ACCESSIBLE	6
STANDARD PARKING	77
TOTAL PARKING	83



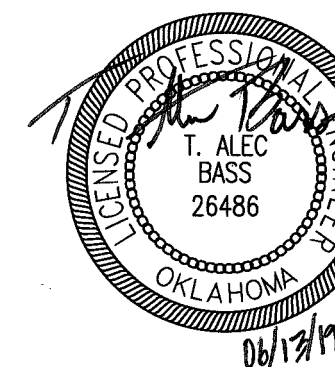
10:52:46 AM
 7/15/2019
 \\okc-servnet\chill\Projects\1880039 Ruby Grant Park Phase 1\Drawn\CO3_2Site.dgn



City of Norman
RUBY GRANT PARK
3110 WEST FRANKLIN ROAD
NORMAN, OKLAHOMA 73072

REVISIONS:

PROFESSIONAL SEAL:



ISSUE DATE:

June 14, 2019

CONSTRUCTION DOCUMENTS

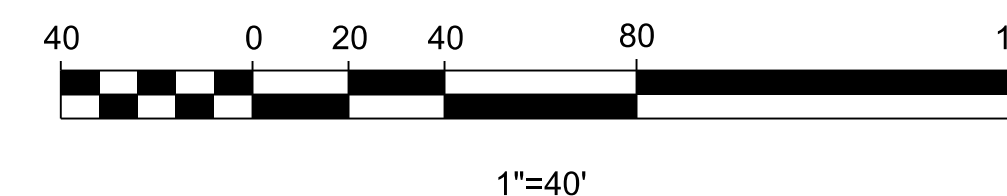
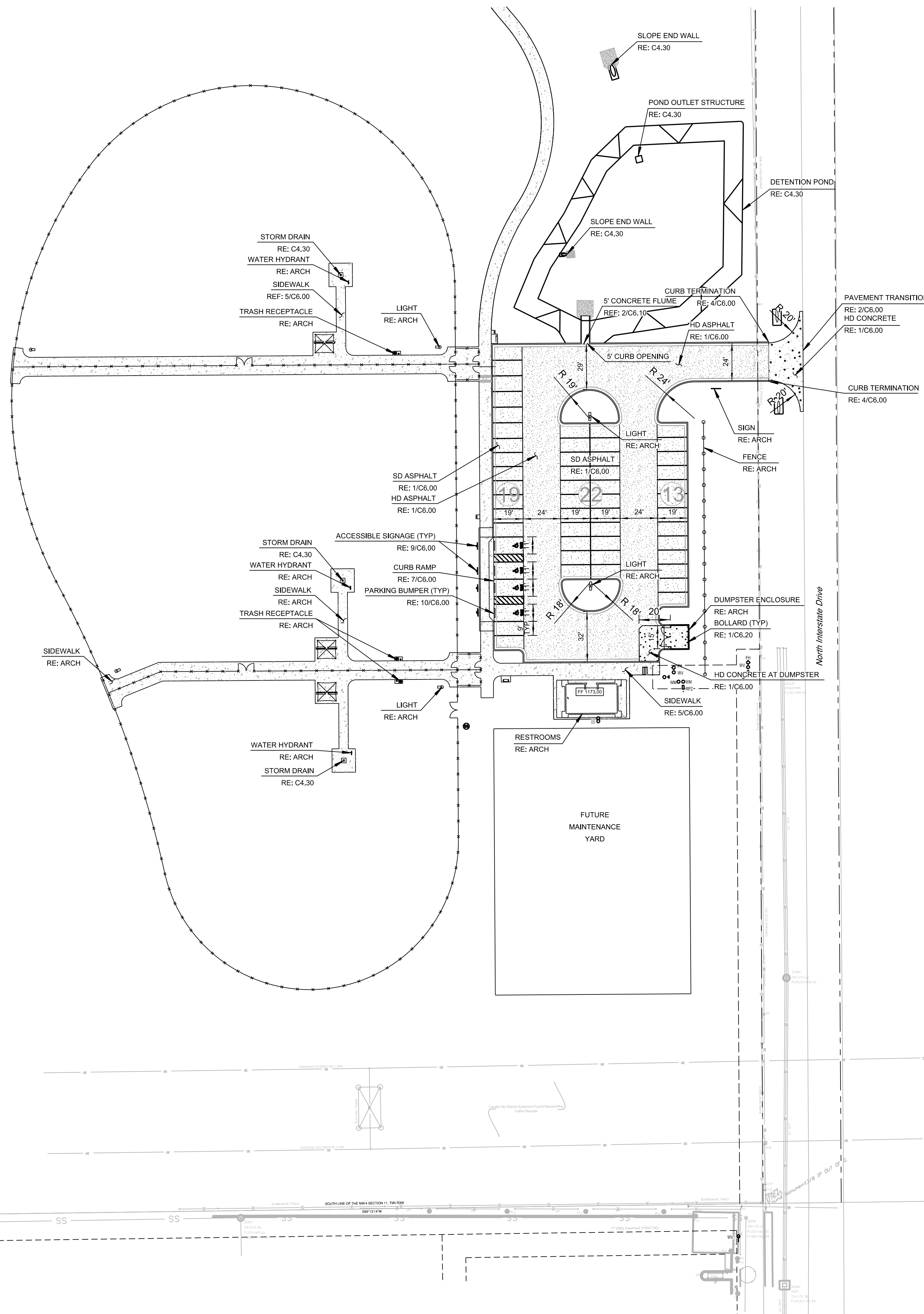
DRAWN BY: CHECKED BY:

SOUTHEAST SITE PLAN

SHEET NUMBER:

C 3.30

DRAWING IS NOT TO SCALE
UNLESS PRINTED ON SHEET SIZE:
22"x34" (ANSI D)



GENERAL SITE NOTES

1. ALL WORK AND MATERIALS SHALL COMPLY WITH ALL MUNICIPAL REGULATIONS AND CODES, WHICHEVER IS MORE STRINGENT.
2. ALL WORK AND MATERIALS SHALL COMPLY WITH O.S.H.A. STANDARDS.
3. CONTRACTOR SHALL BE RESPONSIBLE FOR ALL RELOCATIONS, INCLUDING BUT NOT LIMITED TO, ALL UTILITIES, STORM DRAINAGE, SIGNS, TRAFFIC SIGNALS & POLES, ETC. AS REQUIRED. ALL WORK SHALL BE IN ACCORDANCE WITH GOVERNING AUTHORITIES SPECIFICATIONS AND SHALL BE APPROVED BY SUCH. ALL COST SHALL BE INCLUDED IN BASE BID.
4. ALL DIMENSIONS AND COORDINATES ARE FROM BACK OF CURB UNLESS SHOWN OTHERWISE.
5. RADII = 3'-00" U.N.O.
6. BUILDING COORDINATES ARE TO OUTSIDE FACE OF WALL.

PARKING SUMMARY	
VAN ACCESSIBLE	4
STANDARD PARKING	50
TOTAL PARKING	54



CAUTION

NOTICE TO CONTRACTOR

THE CONTRACTOR IS SPECIFICALLY CAUTIONED THE LOCATION AND ELEVATION OF EXISTING UTILITIES AS SHOWN ON THESE PLANS ARE BASED ON RECORDS OF THE VARIOUS UTILITY COMPANIES AND MEASUREMENTS TAKEN IN THE FIELD. THE INFORMATION IS NOT TO BE RELIED ON AS BEING EXACT OR COMPLETE. THE CONTRACTOR MUST CALL THE LOCAL UTILITY LOCATION CENTER AT LEAST 72 HOURS BEFORE ANY EXCAVATION TO REQUEST EXACT FIELD LOCATIONS OF THE UTILITIES