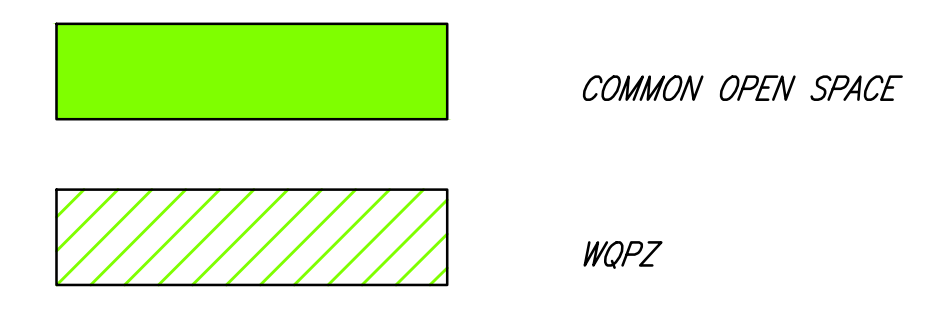
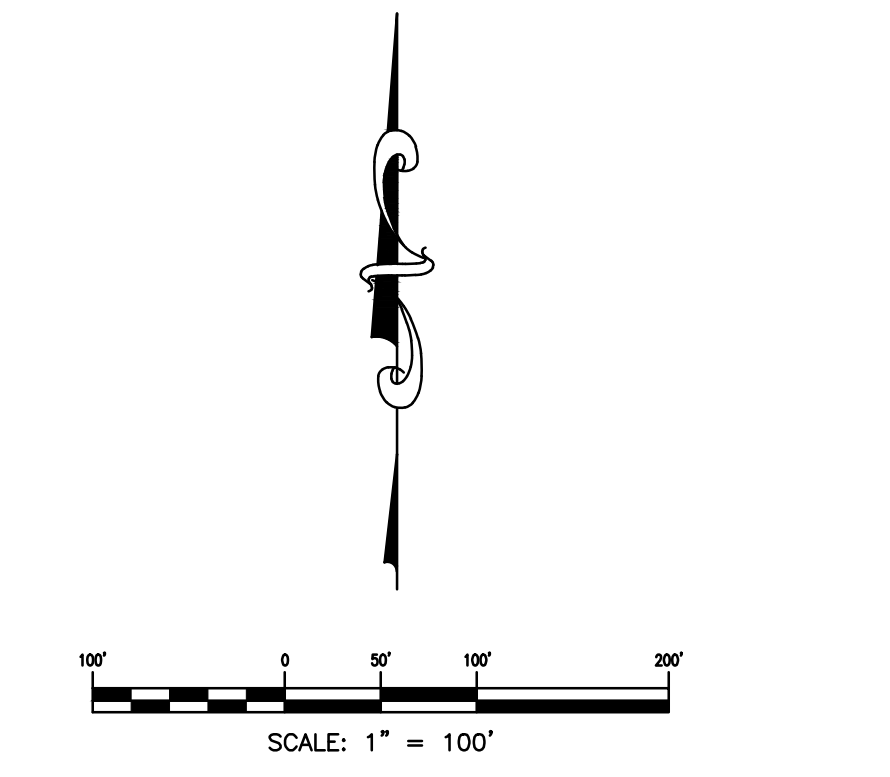
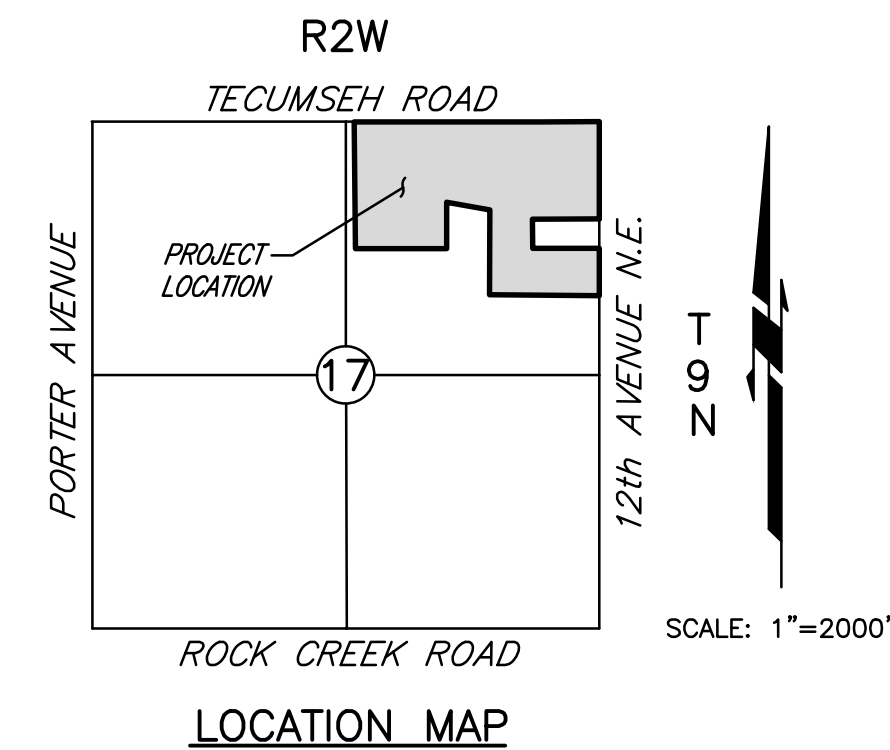


OPEN SPACE EXHIBIT
MONTORO RIDGE
A PLANNED UNIT DEVELOPMENT
 A PART OF THE N.E. 1/4, SECTION 17, T9N, R2W, I.M.
 NORMAN, CLEVELAND COUNTY, OKLAHOMA



TOTAL AREA OF PUD = 63.90 AC.
OPEN SPACE "A" = 3.64 AC.
OPEN SPACE "B" = 0.73 AC.
OPEN SPACE "C" = 1.11 AC.
OPEN SPACE "D" = 0.12 AC.
OPEN SPACE "E" = 0.01 AC.
WQPZ OPEN SPACE = 1.96 AC.
TOTAL OPEN SPACE = 7.57 AC. (11.85%)

© SMC CONSULTING ENGINEERS, P.C. ALL RIGHTS RESERVED. THESE DOCUMENTS MAY NOT BE USED FOR ANY PURPOSES WITHOUT PRIOR WRITTEN PERMISSION FROM SMC CONSULTING ENGINEERS, P.C.

OWNER/DEVELOPER
 LANDMARK LAND COMPANY,
 1400 N. PORTER AVE.
 NORMAN, OKLAHOMA 73071
 PH: (405) 292-5283

PREPARED BY:
 SMC Consulting Engineers, P.C.
 815 W. Main St.
 Oklahoma City, Oklahoma 73106
 PH: (405) 232-7715

MONTORO RIDGE
A PLANNED UNIT DEVELOPMENT
TECUMSEH ROAD & 12th AVE. N.E.
NORMAN, OKLAHOMA

SMC
 Consulting Engineers, P.C.
 Website: www.smc-engineers.com
 PH: 405-232-7715 Fax: 405-232-7889
 1100 N. PORTER AVE., SUITE 100, OKLAHOMA CITY, OKLAHOMA 73106
 SMC OKLAHOMA CERTIFICATE OF AUTHORIZATION NO. 044 EXP. 08/20/15
 No. Revision
 1. Revision
 2. Revision
 3. Revision
 4. Revision
 5. Revision
 6. Revision
 7. Revision
 8. Revision
 9. Revision
 10. Revision

PROJECT NO.: 54771.00
 DATE: 12/09/13
 SCALE: 1" = 100'
 DRAWN BY: M.C.A.
 ENGINEER: Christopher D. Anderson
 P.E. NUMBER: 18288

OPEN SPACE EXHIBIT
 SHEET NO.
1