

1 WATER AND SEWER CONSTRUCTION SHALL BE PERFORMED IN ACCORDANCE WITH ALL LOCAL CODES AND
SPECIFICATIONS.

2 THE CONTRACTOR SHALL PAY ALL FEES AND OBTAIN ALL PERMITS.

3 ALL EXISTING UNDERGROUND UTILITY LOCATIONS ARE APPROXIMATE AND ARE BASED ON TOPOGRAPHIC
SURVEYS. ADDITIONAL UTILITIES MAY BE PRESENT. SHOULD UNEXPECTED UTILITIES BE ENCOUNTERED
DURING CONSTRUCTION, THE CONTRACTOR SHALL NOTIFY THE ARCHITECT/ENGINEER AS SOON
AS POSSIBLE FOR INSTRUCTIONS.

4 THE CONTRACTOR SHALL NOTIFY THE OKLAHOMA ONE-CALL SYSTEM AT (811) AT LEAST 3 WORKING DAYS
PRIOR TO ANY EXCAVATION AND/OR DEMOLITION.

5 MAINTAIN 10'-0" HORIZONTAL AND 24-INCH VERTICAL SEPARATION BETWEEN SANITARY SEWER AND
WATER SUPPLY LINES.

6 CONTRACTOR SHALL VERIFY THE EXACT LOCATION OF ALL EXISTING UTILITIES INCLUDING IRRIGATION
PIPELINES AS OF THE START OF CONSTRUCTION. TAKE CARE TO PROTECT UTILITIES THAT ARE TO REMAIN.
REPAIR DAMAGE ACCORDING TO LOCAL STANDARDS AND AT THE CONTRACTOR'S EXPENSE. COORDINATE
ALL CONSTRUCTION WITH THE APPROPRIATE UTILITY COMPANY. RELOCATE IRRIGATION LINES AS
NECESSARY FOR CONSTRUCTION.

7 THE CONTRACTOR SHALL BE RESPONSIBLE FOR COORDINATING THE SEQUENCING OF CONSTRUCTION FOR
SEWERS OR STORM SEWERS. INSTALL UTILITIES PRIOR TO FINAL SEWAGEMENT CONSTRUCTION.

8 BACKFILL UTILITY TRENCHES UNDER PAVED AREAS WITH CRUSHED STONE OR GRAVEL. BACKFILL
UTILITY TRENCHES IN LAWN AREAS WITH SATISFACTORY FILL MATERIAL COMPACTED TO AT LEAST 85% OF
ANNUAL PERCENTAGE.

9 ADJUST ALL EXISTING CASTINGS TO MATCH PROPOSED FINISH GRADE.

10 ALL SANITARY SEWER PIPE SHALL BE SCHEDULE 40 PIPE UNLESS NOTED OTHERWISE.

11 WATER SERVICE PIPE SHALL BE SD001 PIPE. PRESSURE RATING 200 PSI.

1 ALL EXISTING STRUCTURES, CONCRETE PAVEMENTS/CURBS AND UTILITY SERVICES ON THE SITE SHALL BE
2 REMOVED TO FULL DEPTH PRIOR TO CONSTRUCTION.

3 THE CONTRACTOR SHALL CHECK EXISTING GRADES, DIMENSIONS, AND INVERTS IN THE FIELD AND REPORT
4 ALL DISCREPANCIES TO THE ARCHITECT/ENGINEER PRIOR TO BEGINNING WORK.

5 THE CONTRACTOR SHALL VERIFY THE EXACT LOCATION OF ALL EXISTING UTILITIES, INCLUDING IRRIGATION
6 LINES. TAKE CARE TO PROTECT UTILITIES THAT ARE TO REMAIN AND REPAIR CONTRACTOR CAUSED DAMAGE.
7 ALL UTILITIES SHALL BE MAINTAINED AS LOCATED AND AT THE CONTRACTOR'S EXPENSE. COORDINATE ALL
8 CONSTRUCTION WITH THE APPROPRIATE UTILITY COMPANY. RELOCATE IRRIGATION LINES AS NECESSARY
9 FOR CONSTRUCTION.

10 THE CONTRACTOR SHALL COMPLY WITH ALL LOCAL CODES, OBTAIN ALL PERMITS AND PAY ALL FEES PRIOR
11 TO BEGINNING WORK.

12 PROVIDE A SMOOTH TRANSITION BETWEEN EXISTING PAVEMENT AND NEW PAVEMENT. FIELD ADJUSTMENT
13 OF FINAL GRADES MAY BE NECESSARY. INSTALL ALL UTILITIES AND IRRIGATION SLEEVES PRIOR TO
14 INSTALLATION OF PAVEMENT.

15 THE CONTRACTOR SHALL PROTECT ALL TREES TO REMAIN. IN ACCORDANCE WITH THE SPECIFICATIONS, DO
16 NOT OPERATE OR STORE HEAVY EQUIPMENT OR STORE MATERIALS WITHIN THE DRINKLINS OF TREES OR
17 OUTSIDE THE LIMIT DRAINAGE.

18 CONCRETE WALKS AND PADS SHALL HAVE A BROOM FINISH WITH NO EXPOSED AGGREGATE ON ANY FACE
19 ALL CONCRETE TO BE MINIMUM 3,000 PSI COMPRESSIVE STRENGTH WITH 5% MAX. AIR ENTRAINMENT.
20 MIXTURES WITH WATER/CEMENT RATIO AT 6.5 OR BELOW ARE RECOMMENDED. CURB RAMP SLOPES, SIDEWALK
21 REQUIREMENTS * IF APPLICABLE, THE CONTRACTOR SHALL REQUEST INSPECTION OF SIDEWALK AND RAMP
22 FORMS PRIOR TO PLACEMENT OF CONCRETE.

23 CONSTRUCTION OF REINFORCED CONCRETE PAVEMENT SHALL BE IN ACCORDANCE WITH ACI 330 STANDARD
24 FOR CONCRETE. CURB FORMS SHOULD BE APPLIED TO ALL CONCRETE SURFACES IMMEDIATELY AFTER
25 BROOM FINISH. WITHIN 75 MINUTES PRIOR TO PLACEMENT IT CANNOT BE PLACED WITHIN 90 MINUTES OF
26 BATCH TIME OR WITHIN 75 MINUTES DURING SUMMER HIGH TEMPERATURE CONDITIONS.

27 ALL DAMAGE TO EXISTING ASPHALT PAVEMENT TO REMAIN RESULTING FROM NEW CONSTRUCTION SHALL BE
28 REPLACED WITH LIKE MATERIALS AT CONTRACTOR'S EXPENSE.

29 DIMENSIONS ARE TO THE FACE OF CURB. EXPOSED FACE OF WALL, EDGE OF CONCRETE OR TO THE FACE OF
30 BUILDING, UNLESS OTHERWISE NOTED.

31 COORDINATES ARE TO FACE OF BUILDINGS, CENTER LINES OF DRIVEWAYS, CENTER OF SANITARY SEWER
32 MAINLINES, AND CENTER AT FACE OF CURB ON CURB INLETS, UNLESS OTHERWISE NOTED.

33 PARKING STRIPES SHALL BE 4-INCH YELLOW PAVEMENT PAINT.

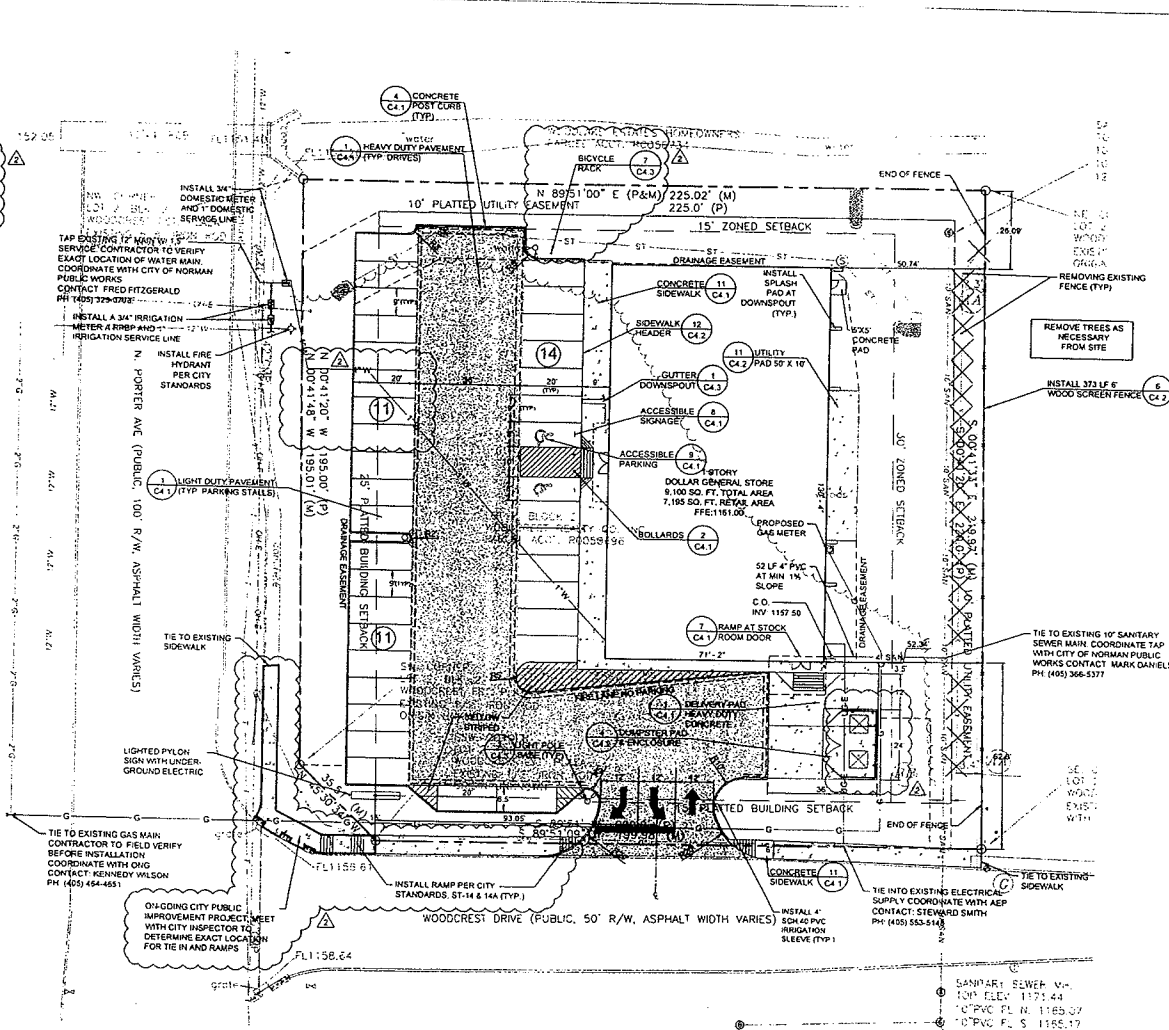
34 SCREENED ITEMS INDICATE A PRE-CONSTRUCTION TOPOGRAPHIC SURVEY PROVIDED BY: CORNERSTONE
35 SURVEYING, INC., DATED OCTOBER 1, 2012.

36 CONSTRUCTION JOINTS SHALL BE CONSTRUCTED TO A DEPTH OF AT LEAST 1/4 THE CONCRETE THICKNESS,
37 AND SHALL DIVIDE CONCRETE ROUGHLY INTO SQUARES WITH MAXIMUM 17 SEGMENTS. JOINTS CAN BE
38 SAWCUT, FORMED OR TOOLED.

39 MAINTAIN ONE SET OF AS-BUILT DRAWINGS ON THE JOB SITE FOR DISTRIBUTION TO THE
40 ARCHITECT/ENGINEER UPON COMPLETION.

41 CONTRACTOR SHALL PROVIDE AS-BUILT ELEVATION SURVEY FOR ALL NEW SIDEWALK RAMP.

STRIPING LEGEND	
YELLOW CURBING AND BOLLARDS - PARKING LOT	SURFACES SHOULD BE CLEAN, DRY AND VETAL SURFACES FREE OF HEAVY RUST. 2 COATS SHERWIN WILLIAMS - KEM 4000 ACRYLIC ALKID ENAMEL, SAFETY YELLOW 8557300
STRIPING - PARKING LOT	SURFACES SHOULD BE CLEAN, DRY TOP COAT SHERWIN WILLIAMS - PRO MAR TRAFFIC MARKING PAINT YELLOW TMS-99
HANDICAP STRIPING - PARKING LOT	SURFACES SHOULD BE CLEAN, DRY TOP COAT SHERWIN WILLIAMS - PRO MAR TRAFFIC MARKING PAINT "C" BLUE



WATER
CITY OF NORMAN PUBLIC WORKS
CONTACT: FRED FITZGERALD
PH: (405) 329-0703

SANITARY
CITY OF NORMAN PUBLIC WORKS
CONTACT: MARK DANIELS
PH: (405) 366-5377

GAS
ONG
CONTACT: KENNEDY WILSON
PH: (405) 464-4651

ELECTRIC
AEP
CONTACT: STEWARD SMITH
PH: (405) 553-5148

TELEPHONE
ATT
CONTACT: RICHARD WOOTEN
PH: (405) 291-3100



0 22
GRAPHIC SCALE

C2.1

SHEET