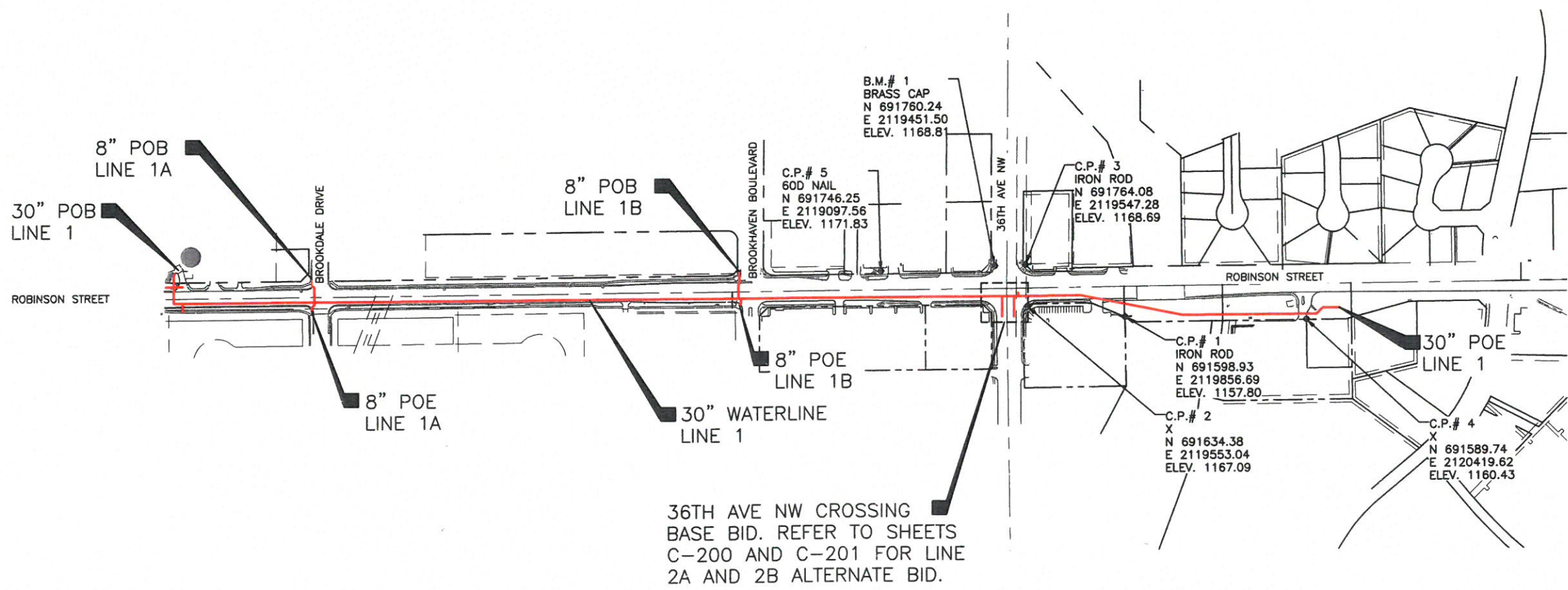


200 100 0 200 400
 GRAPHIC SCALE : 1" = 200'



ALAN SWARTZ ASSOCIATES, INC.
 ENVIRONMENTAL ENGINEERS AND SCIENTISTS
 414 NW 4TH STREET SUITE 150
 OKLAHOMA CITY, OKLAHOMA 73102
 PHONE: 405-442-2725
 OKLAHOMA FIRM 1097

NO.	DATE	REVISION	BY

City of Norman
Building an Inclusive Community

CITY OF NORMAN, OKLAHOMA
 ROBINSON WATER LINE REPLACEMENT, PHASE II
 GENERAL
 PROJECT MAP AND CONTROL POINTS



THESE DOCUMENTS ARE FOR ODEQ REVIEW AND ARE NOT INTENDED FOR CONSTRUCTION OR BIDDING PURPOSES.

BAR IS ONE INCH ON ORIGINAL DRAWING.
 ONE INCH

DESIGNED **RGW**
 DRAWN **FJC**
 CHECKED **ADS**
 REVIEWED **CRM**

Seq. **5** of **31**

Dwg. No. **G-004**

1115-002-01

STATE OF OKLAHOMA
 DEPARTMENT OF ENVIRONMENTAL QUALITY
APPROVED

DEC 02 2019

Rocky W. Chen, P.E.
 Water Quality Division

D. Adam Divinc
 Construction Permitting Section

PRINTED: 11/29/2018 9:51 AM O:\Projects\1115\002-01\Acad\PHASE II\SHEETFILES\G-004.dwg SAVED: 11/28/2018 9:16 PM USER: Schmebeck,Andree