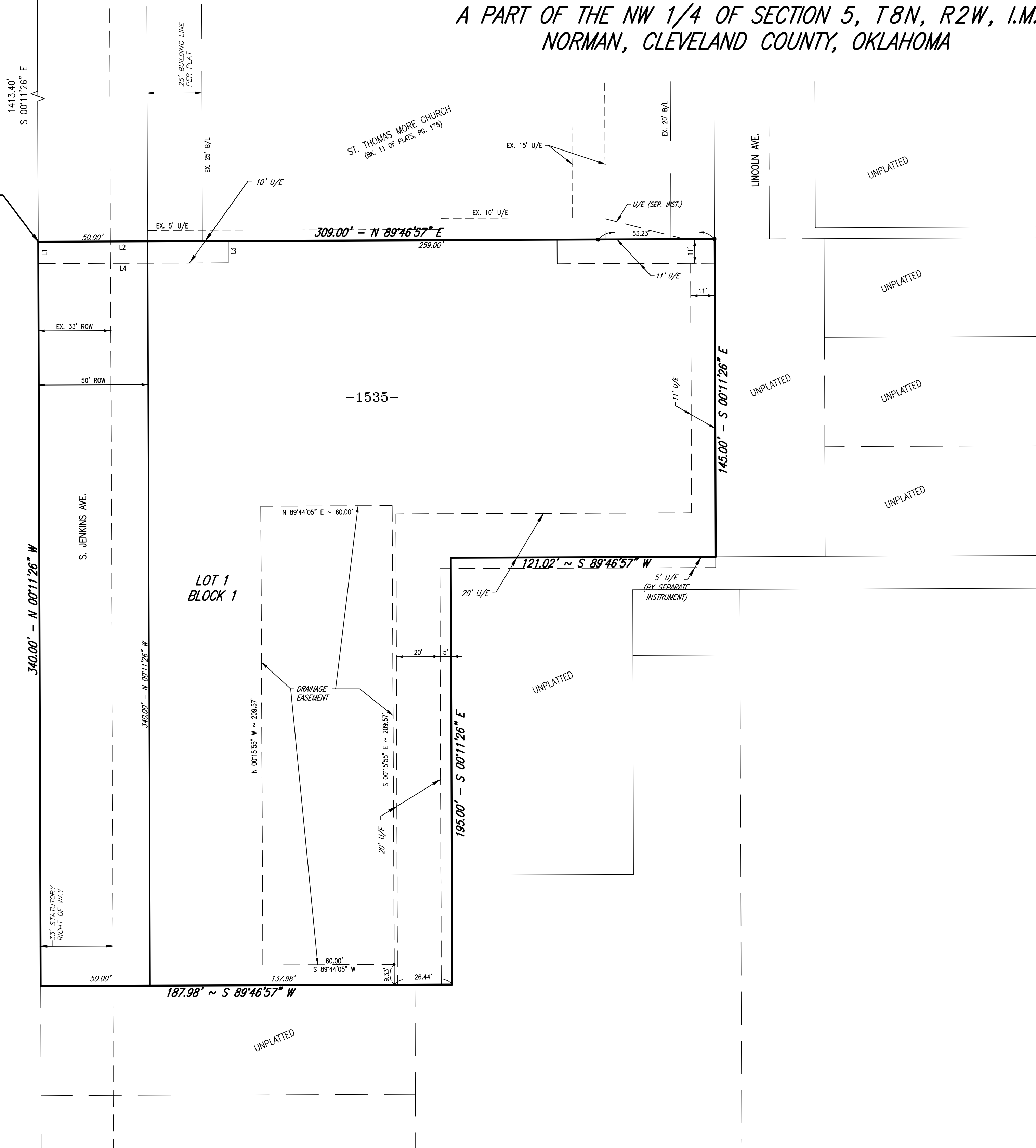


FINAL PLAT
ST. THOMAS MORE CHURCH SECTION 2
 A PART OF THE NW 1/4 OF SECTION 5, T8N, R2W, I.M.
 NORMAN, CLEVELAND COUNTY, OKLAHOMA

P.O.C.
 N.W. COR., N.W. ¼, SEC. 5,
 T8N, R2W, I.M.

P.O.B.

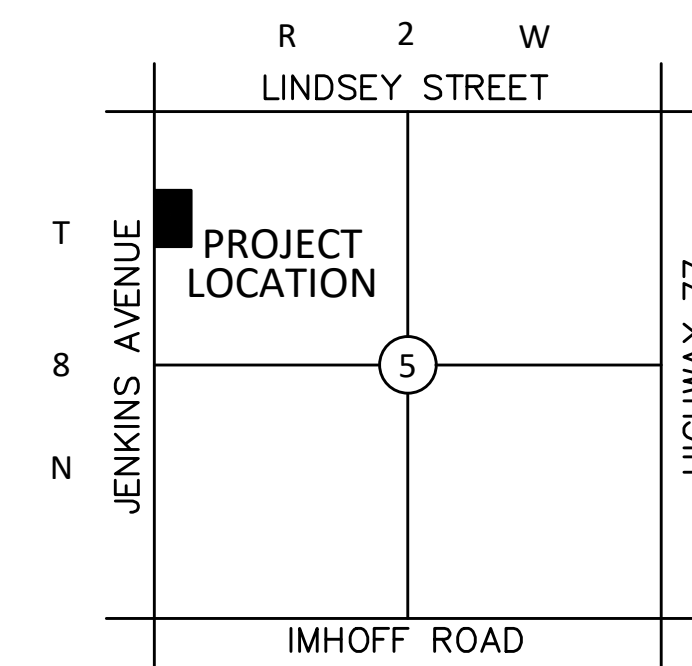


SCALE: 1" = 30'

TOTAL LOTS
 1 LOT

UTILITY EASEMENT
 LINE TABLE

LINE	BEARING	DISTANCE
L1	N 00°11'26" W	15.00'
L2	N 89°46'57" E	86.79'
L3	S 00°13'03" E	10.00'
L4	S 89°46'57" W	86.80'



LOCATION MAP
 NOT TO SCALE

LEGAL DESCRIPTION:

Being a tract of land lying in the N.W. 1/4, Section 5, T8N, R2W of the INDIAN MERIDIAN, NORMAN, CLEVELAND COUNTY, OKLAHOMA, more particularly described as follows:

COMMENCING at the N.W. corner of said N.W. ¼; THENCE South 00°11'26" East along the West line of said N.W. ¼ a distance of 1413.40 feet to the POINT OF BEGINNING;

THENCE North 89°46'57" East a distance of 309.00 feet;
 THENCE South 00°11'26" East a distance of 145.00 feet;
 THENCE South 89°46'57" West a distance of 121.02 feet;
 THENCE South 00°11'26" East a distance of 195.00 feet;
 THENCE South 89°46'57" West a distance of 187.98 feet to a point on said West line;
 THENCE North 00°11'26" West along said West line a distance of 340.00 feet to the POINT OF BEGINNING.

Said tract contains 81,461 square feet, or 1.870 acres more or less.

NOTES:

1. BEARINGS SHOWN HEREON ARE BASED ON THE RECORD OF S 00°11'26" E FOR THE WEST LINE OF S. JENKINS AVE.
2. EASEMENTS SHOWN HEREON BY SPECIFIC RECORDING INFORMATION ARE SHOWN FOR REFERENCE PURPOSES ONLY AND ARE NOT DEDICATED PURSUANT TO THIS FINAL PLAT.
3. UNLESS NOTED OTHERWISE, THE UNIT OF MEASUREMENT SHOWN FOR ALL DIMENSIONS ON THE FINAL PLAT IS FEET.

STORM DRAINAGE DETENTION FACILITY EASEMENT

DRAINAGE DETENTION FACILITY EASEMENTS ARE HEREBY ESTABLISHED AS SHOWN TO PROVIDE FOR DETENTION OF STORM SURFACE WATER AND CONSTRUCTED AS APPROVED BY THE CITY ENGINEER. ALL MAINTENANCE WITHIN THE DRAINAGE DETENTION FACILITY EASEMENT SHALL BE THE RIGHT, DUTY AND RESPONSIBILITY OF THE PROPERTY OWNER(S) IN THE PLAT OF ST. THOMAS MORE CHURCH SECTION 2; HOWEVER, IF MAINTENANCE IS NEGLECTED OR SUBJECT TO OTHER UNUSUAL CIRCUMSTANCES AND IS DETERMINED TO BE A HAZARD OR THREAT TO PUBLIC SAFETY BY THE CITY ENGINEER, CORRECTIVE MAINTENANCE MAY BE PERFORMED BY THE GOVERNING JURISDICTION WITH COSTS ASSESSED TO AND BORN UPON SAID PROPERTY OWNER(S). OFFICIALS REPRESENTING THE ENGINEERING DIVISION, PUBLIC WORKS DEPARTMENT, SHALL HAVE THE RIGHT TO ENTER UPON THE EASEMENT FOR PURPOSES OF PERIODIC INSPECTION AND/OR CORRECTIVE MAINTENANCE OF THE FACILITY. UPON RECEIVING WRITTEN APPROVAL FROM THE ENGINEERING DIVISION, PUBLIC WORKS DEPARTMENT, PROPERTY OWNER(S) MAY CONSTRUCT IMPROVEMENTS WITHIN THE EASEMENT, PROVIDED THE IMPROVEMENT DOES NOT INTERFERE WITH THE FUNCTION OF THE DETENTION FACILITY.

BENCHMARKS:

SITE BENCHMARK # 1:
 ELEVATION. =

LONA = LIMITS OF NO ACCESS
 D/E = DRAINAGE EASEMENT
 U/E = UTILITY EASEMENT
 PED/E = PEDESTRIAN EASEMENT
 B/L = BUILDING LINE
 -1000- = ADDRESS

Date: March 28, 2018
 SMC CONSULTING ENGINEERS, P.C.
 815 W. Main Street
 Oklahoma City, OK 73106
 PH: (405)232-7715
 Oklahoma CA#464 Exp. 6-30-2019