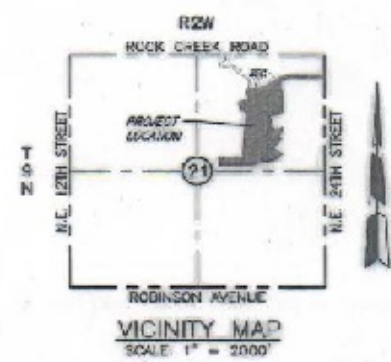


$lc = 42^{\circ}55'30''$
 $R = 450.00$
 $L = 337.13$
 $T = 176.92$
 $CB = N 69^{\circ}25'57'' E$
 $CL = 329.30$



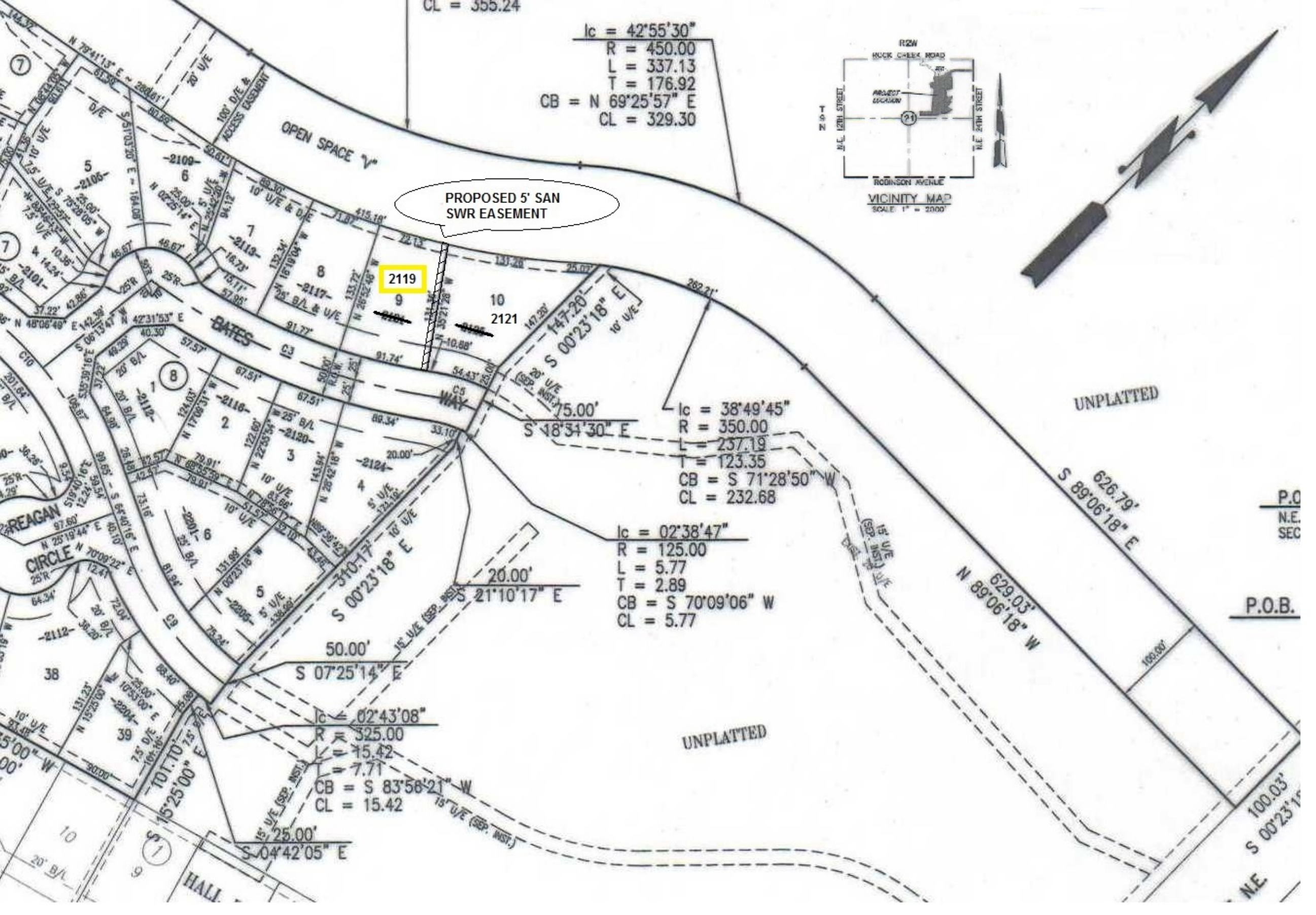
PROPOSED 5' SAN SWR EASEMENT

2119

$lc = 38^{\circ}49'45''$
 $R = 350.00$
 $L = 237.19$
 $T = 123.35$
 $CB = S 71^{\circ}28'50'' W$
 $CL = 232.68$

$lc = 02^{\circ}38'47''$
 $R = 125.00$
 $L = 5.77$
 $T = 2.89$
 $CB = S 70^{\circ}09'06'' W$
 $CL = 5.77$

$lc = 02^{\circ}43'08''$
 $R = 325.00$
 $L = 15.42$
 $T = 7.71$
 $CB = S 83^{\circ}58'21'' W$
 $CL = 15.42$



P.O.
 N.E.
 SEC
 P.O.B.