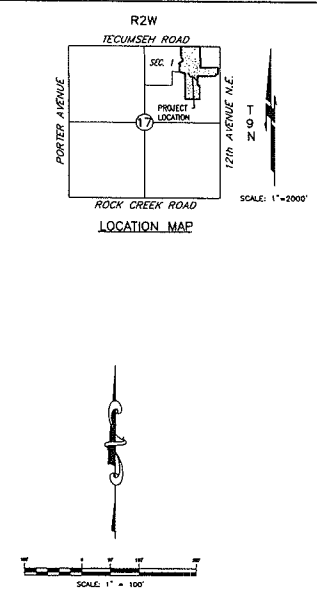
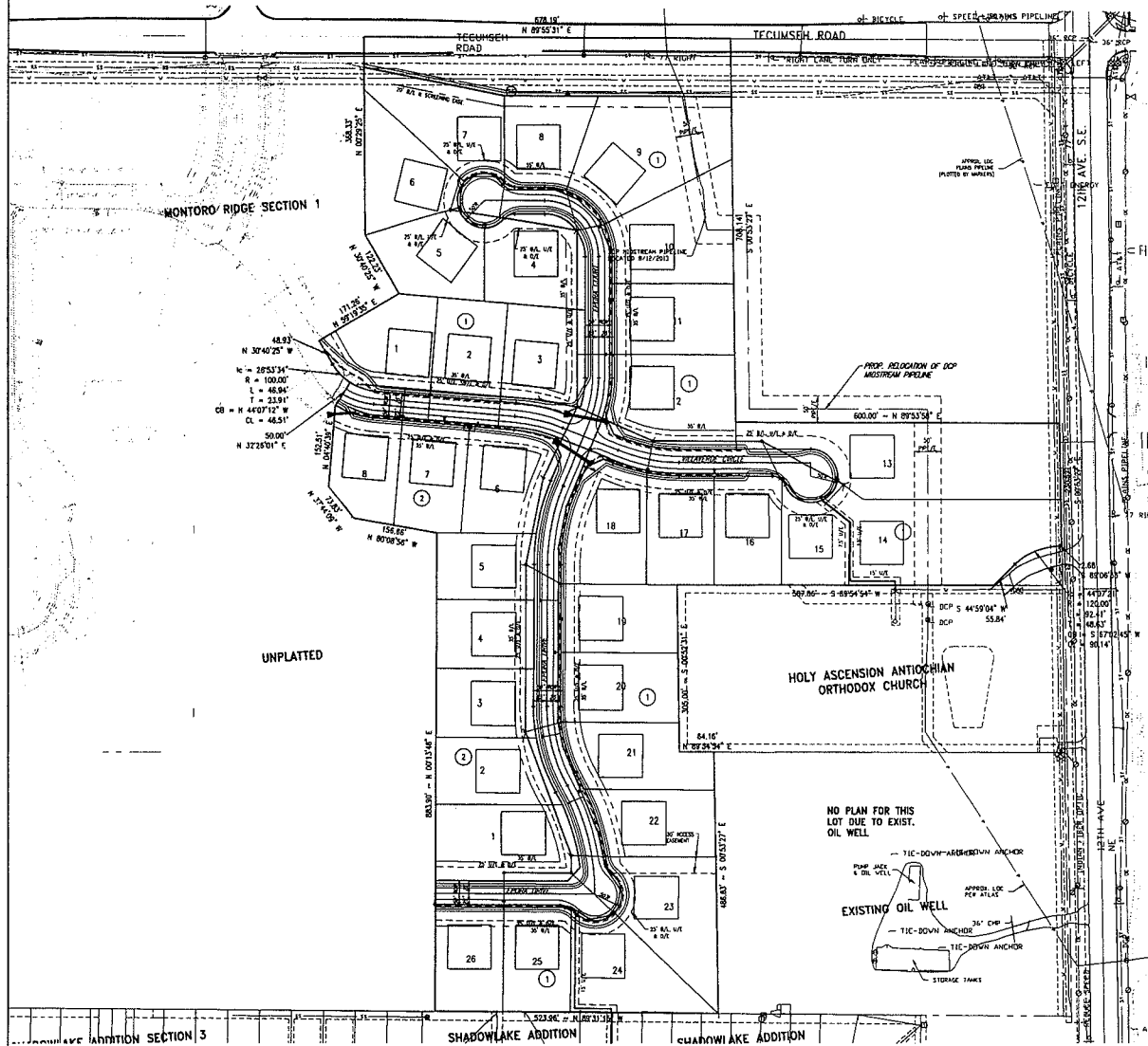


# FINAL SITE DEVELOPMENT PLAN MONTORO RIDGE SECTION 2

A PLANNED UNIT DEVELOPMENT  
A PART OF THE N.E. 1/4, SECTION 17, T9N, R2W, I.M.  
NORMAN, CLEVELAND COUNTY, OKLAHOMA



© SMC CONSULTING ENGINEERS, P.C. ALL RIGHTS RESERVED. THESE DOCUMENTS ARE NOT BE USED FOR ANY PURPOSES WITHOUT THE WRITTEN PERMISSION FROM SMC CONSULTING ENGINEERS, P.C.

**OWNER/DEVELOPER**  
LANDMARK LAND COMPANY, LLC  
1400 N. PORTER AVE.  
NORMAN, OKLAHOMA 73071  
PH: (405)282-5583

**PREPARED BY:**  
SMC Consulting Engineers, P.C.  
815 W. Main St.  
Dishon, Oklahoma 73016  
PH: (405)282-7715

MONTORO RIDGE SECTION 2  
A PLANNED UNIT DEVELOPMENT  
TECUMSEH ROAD & 12th AVE. N.E.  
NORMAN, OKLAHOMA

<b>SMC</b> SMC Consulting Engineers, P.C. 815 W. Main St. Dishon, Oklahoma 73016 PH: (405)282-7715	DATE	12/28/17
	SCALE	1" = 100'
PROJECT NO.	147721	
DATE	02/28/17	
SCALE	1" = 100'	
DRAWN BY	D.C.	
CHECKED BY	P.E. HANSEN	

FINAL SITE DEVELOPMENT PLAN  
SHEET NO.  
1