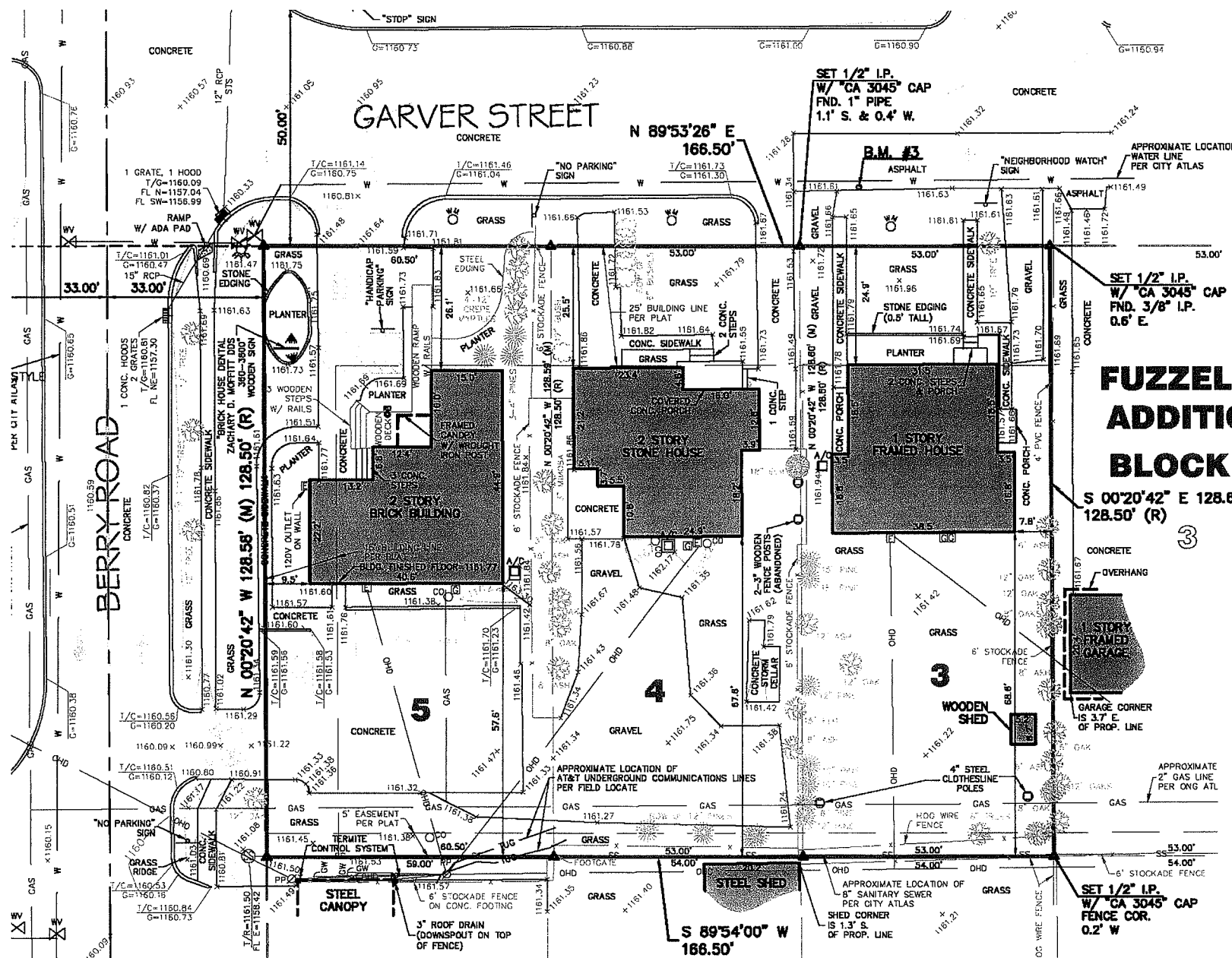




BRICK HOUSE DENTAL

201 S. Berry Road
Norman, Oklahoma



FUZZELL'S ADDITION BLOCK 2

S 00°20'42" E 128.81' (M)
128.50' (R)

LEGEND

- ⊙ - AIR CONDITIONING UNIT
- ⊙ - CLEAN DIRT
- ⊙ - ELECTRIC MANHOLE
- ⊙ - ELECTRIC POSE
- ⊙ - FIRE DUCT CONNECTION
- ⊙ - FWC INVERTANT
- ⊙ - GAS FILLER PORT
- ⊙ - GAS METER
- ⊙ - GROUND POST
- ⊙ - GAS VALVE
- ⊙ - GUY WIRE
- ⊙ - HOLE
- ⊙ - LIGHT POLE
- ⊙ - MONITORING WELL
- ⊙ - MAIL BOX
- ⊙ - MANHOLE
- ⊙ - ROOF DRAIN
- ⊙ - GROUND LIGHT
- ⊙ - MEASURED
- ⊙ - SET 1/2" I.P. W/ "CA 3045" CAP
- ⊙ - ELEC. LINE
- ⊙ - SANITARY SEWER LINE
- ⊙ - WATER LINE
- ⊙ - FENCE
- ⊙ - DRIVE/ROAD LINE
- ⊙ - STORM SEWER LINE
- ⊙ - FIBER OPTIC LINE
- ⊙ - GAS LINE
- ⊙ - CROSSING/STATION LINE
- ⊙ - FULL BOX
- ⊙ - POWER POLE
- ⊙ - POWER POLE BY UNDERGROUND SERVICE
- ⊙ - SPRINKLER HEAD
- ⊙ - SPRINKLER VALVE
- ⊙ - SANITARY SEWER MANHOLE
- ⊙ - STORM SEWER MANHOLE
- ⊙ - SIGN
- ⊙ - TELEPHONE MANHOLE
- ⊙ - TELEPHONE POSE
- ⊙ - TELEPHONE UNDERGROUND
- ⊙ - TRAFFIC SIGNAL LIGHT
- ⊙ - VENT
- ⊙ - WATER METER
- ⊙ - WATER VALVE
- ⊙ - FRENCH DRAIN
- ⊙ - BOLLARD LIGHT
- ⊙ - RECORD

Existing Site Survey
Scale: 1" = 20'-0"

Conceptual Design
April 9, 2018



This drawing is the property of GSO, Inc. and is not to be copied in whole or in part. It is to be used for the project and is specifically identified herein and is not to be used in any other project. It is to be returned upon request.

Exhibit B