

Don Ped

Don Ped

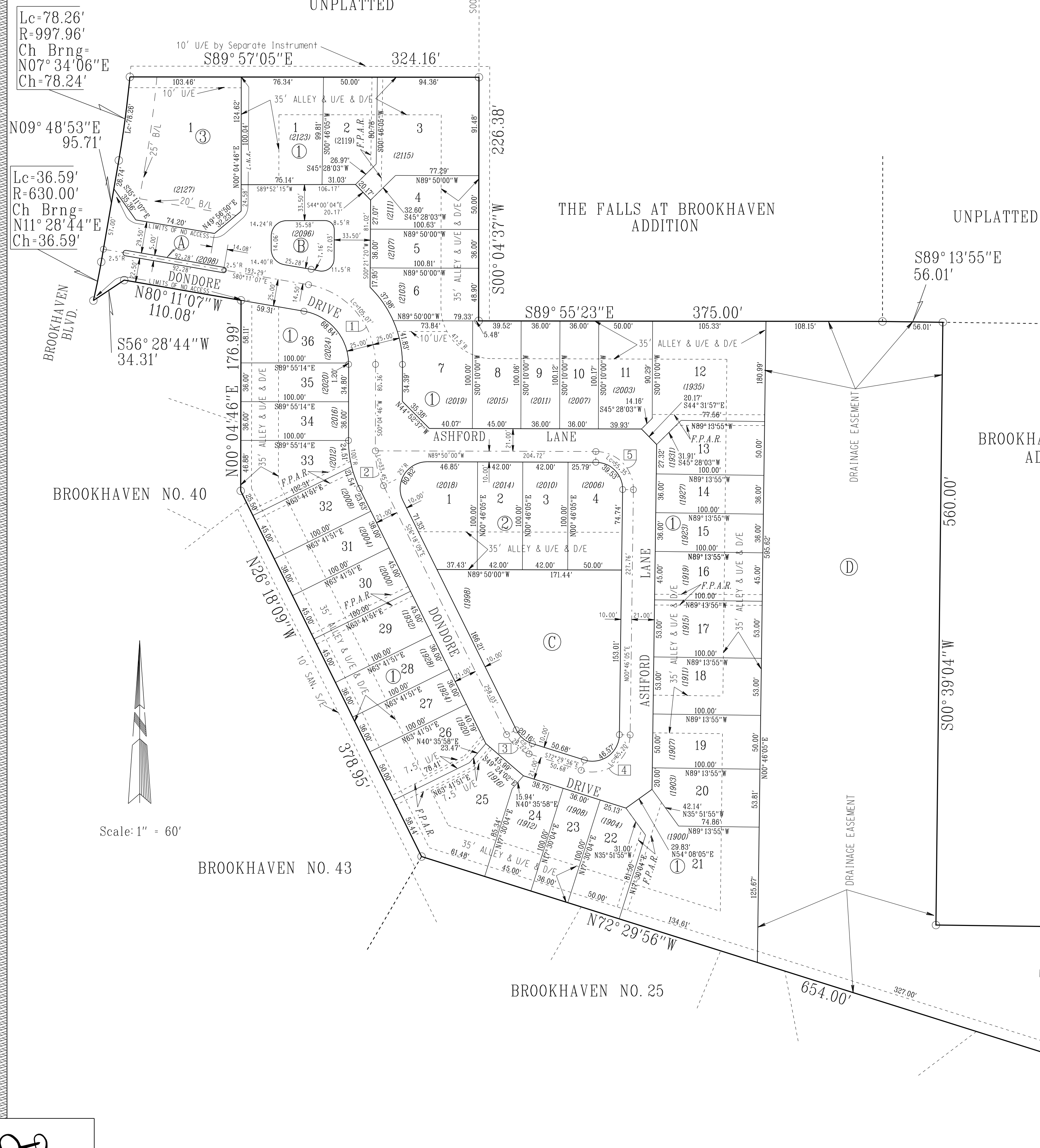
FINAL PLAT

BROOKHAVEN PLACE ADDITION

A PLANNED UNIT DEVELOPMENT

A PART OF THE NE/4, SEC. 22, T9N-R3W, I.M.

NORMAN, CLEVELAND COUNTY, OKLAHOMA



CURVE DATA						
Curve No.	Δ	T	R	Lc	Ch.	Ch. Brng.
1	80°15'52"	63.23'	75.00'	105.07'	96.68'	S40°03'10"E
2	26°22'55"	17.02'	72.64'	33.45'	33.15'	S13°06'42"E
3	46°11'46"	14.93'	35.00'	28.22'	27.46'	S49°24'02"E
4	106°43'59"	47.07'	35.00'	65.20'	56.17'	N54°08'05"E
5	90°36'05"	35.37'	35.00'	55.35'	49.76'	N44°31'57"W

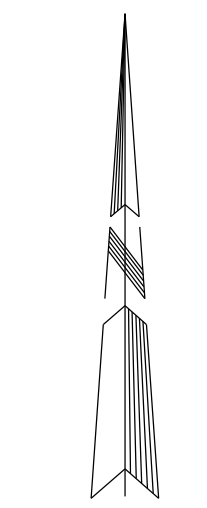
BLOCKS A, B C, & D WILL BE MAINTAINED BY THE HOMEOWNER'S ASSOCIATION.

BLOCK 1 CONTAINS 36 LOTS (P.U.D.)
 BLOCK 2 CONTAINS 4 LOTS (P.U.D.)
 BLOCK 3 CONTAINS 1 LOT (R-1)
 TOTAL 41 LOTS

CITY OF NORMAN 20' PERMANENT UTILITY EASEMENT BOOK 3050, PAGE 109
 CITY OF NORMAN 17' PUBLIC ROADWAY, UTILITY AND DRAINAGE EASEMENT BOOK 2986, PAGE 963
 20' FIBER OPTICS EASEMENT

Lc=78.26'
 R=997.96'
 Ch Brng=
 N07°34'06"E
 Ch=78.24'

Lc=36.59'
 R=630.00'
 Ch Brng=
 N11°28'44"E
 Ch=36.59'



Scale: 1" = 60'

Don Ped

ENGINEERS SURVEYORS PLANNERS **CPES** Clour Planning & Engineering Services
 123 Tonhawa St., Suite 105 Norman, OK 73069 • 405-329-8500 • C.A. No. 5976, Exp. Date 06-28-2014

BROOKHAVEN PLACE ADDITION
 A PLANNED UNIT DEVELOPMENT
 A PART OF THE NE/4, SEC. 22, T9N-R3W, I.M.
 NORMAN, CLEVELAND COUNTY, OKLAHOMA
FINAL PLAT

Drawn By: MICROSTATION Checked By: _____
 Date: 01-30-2013 Rev. 1:02-22-2013

Sheet 2 of 3 P-031