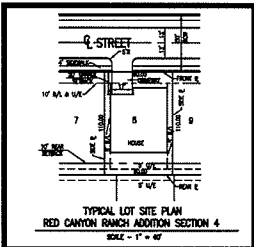


**STORM DRAINAGE DETENTION FACILITY EASEMENT**

DRAINAGE DETENTION FACILITY EASEMENTS ARE HEREBY ESTABLISHED AS SHOWN TO PROVIDE FOR DETENTION OF STORM SURFACE WATER AND CONSTRUCTED AS APPROVED BY THE CITY ENGINEER. ALL MAINTENANCE WITHIN THE DRAINAGE DETENTION FACILITY EASEMENT SHALL BE THE RIGHT, DUTY AND RESPONSIBILITY OF THE PROPERTY OWNERS IN THE FULFILLMENT OF BEST PRACTICES, INCLUDING, BUT NOT LIMITED TO, MAINTENANCE OF THE FACILITY OR SUBJECT TO OTHER USUAL CIRCUMSTANCES AND IS DETERMINED TO BE A BURDEN ON THE PROPERTY OWNERS OF THE CITY ENGINEER. CONSTRUCTION AND MAINTENANCE OF THE FACILITY SHALL BE THE RESPONSIBILITY OF THE PROPERTY OWNERS. THE CITY ENGINEER, PUBLIC WORKS DEPARTMENT, SHALL HAVE THE RIGHT TO ENTER UPON THE FACILITY FOR PURPOSES OF INSPECTION AND FOR CONDUCTING MAINTENANCE OF THE FACILITY. UPON RECEIVING WRITTEN APPROVAL FROM THE CITY ENGINEER, PUBLIC WORKS DEPARTMENT, PROPERTY OWNERS MAY CONDUCT IMPROVEMENTS WITHIN THE FACILITY, PROVIDED THE IMPROVEMENT DOES NOT INTERFERE WITH THE FUNCTION OF THE DETENTION FACILITY.



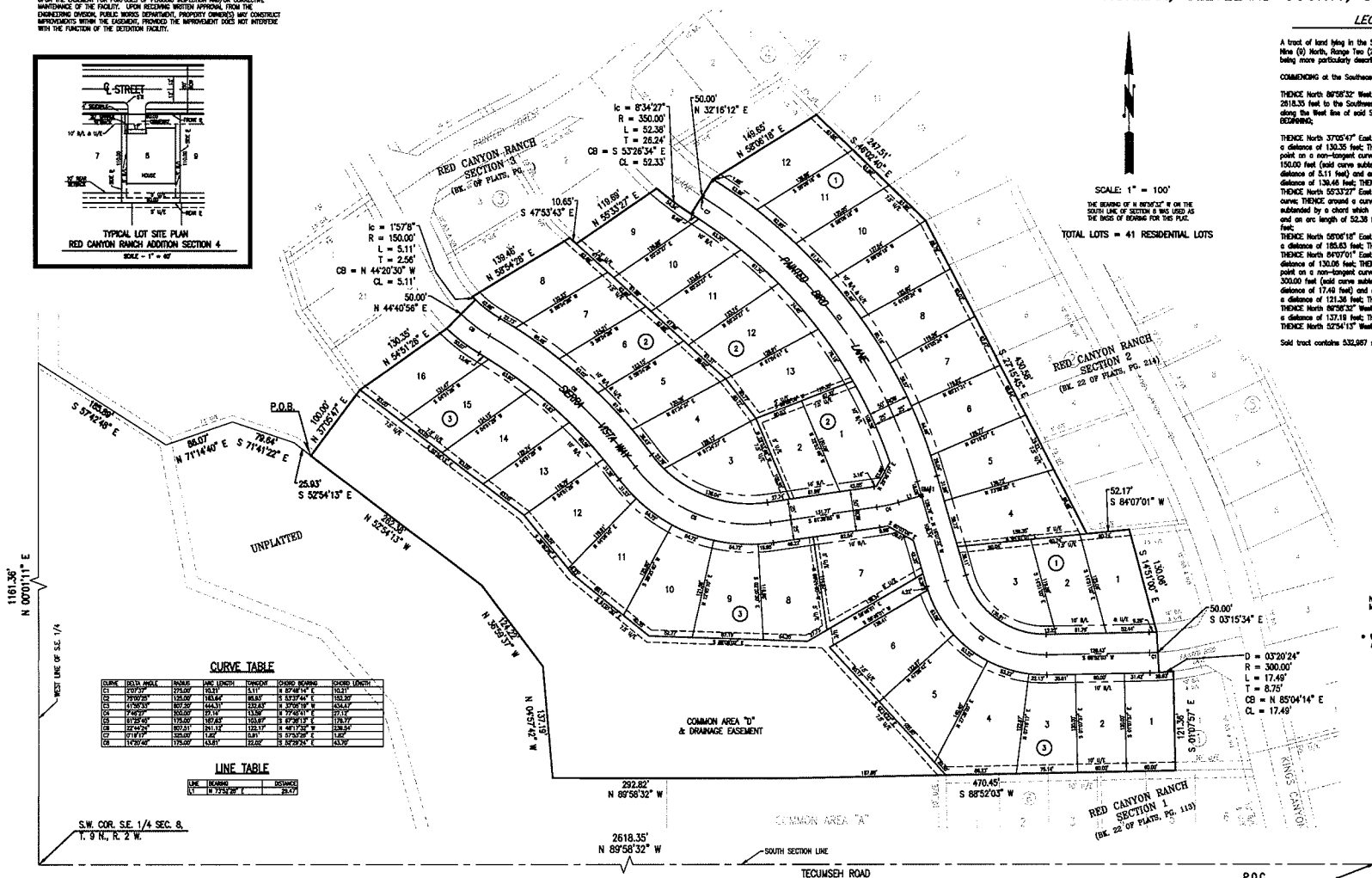
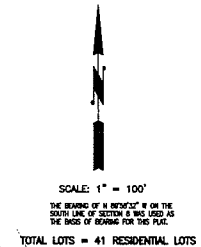
**FINAL PLAT**  
**RED CANYON RANCH SECTION 4**  
A PLANNED UNIT DEVELOPMENT  
A PART OF THE S.E. 1/4, SECTION 8, T9N, R2W, I.M.  
NORMAN, CLEVELAND COUNTY, OKLAHOMA

**LEGAL DESCRIPTION**

A tract of land lying in the Southwest Quarter (S.E. 1/4) of Section Eight (8), Township Nine (9) North, Range Two (2) West of the Indian Meridian, Cleveland County, Oklahoma being more particularly described as follows:

COMMENCING at the Southwest Corner of said S.E. 1/4;  
THENCE North 89°28'32" West along the South line of said S.E. 1/4 a distance of 2818.35 feet to the Southwest corner of said S.E. 1/4; THENCE North 00°01'11" East along the West line of said S.E. 1/4 a distance of 1161.35 feet to the POINT OF BEGINNING;  
THENCE North 37°02'47" East a distance of 100.00 feet; THENCE North 54°31'26" East a distance of 130.35 feet; THENCE North 44°02'56" East a distance of 50.00 feet to a point on a non-tangent curve; THENCE around a curve to the right having a radius of 150.00 feet (said curve subtended by a chord which bears North 47°20'37" West, a distance of 5.11 feet) and an arc length of 5.11 feet; THENCE North 38°54'28" East a distance of 138.64 feet; THENCE South 47°34'43" East a distance of 10.65 feet; THENCE North 52°32'37" East a distance of 119.89 feet to a point on a non-tangent curve; THENCE around a curve to the left having a radius of 350.00 feet (said curve subtended by a chord which bears South 52°26'34" East, a distance of 52.33 feet) and an arc length of 52.33 feet; THENCE North 32°15'12" East a distance of 50.00 feet;  
THENCE North 58°06'18" East a distance of 148.85 feet; THENCE South 48°02'07" East a distance of 185.83 feet; THENCE South 27°15'45" East a distance of 430.56 feet; THENCE North 84°07'01" East a distance of 52.17 feet; THENCE South 14°51'00" East a distance of 150.00 feet; THENCE South 03°15'34" East a distance of 50.00 feet to a point on a non-tangent curve; THENCE around a curve to the left having a radius of 300.00 feet (said curve subtended by a chord which bears North 85°04'14" East, a distance of 17.49 feet) and an arc length of 17.49 feet; THENCE South 01°07'57" East a distance of 121.36 feet; THENCE South 89°32'03" West a distance of 470.45 feet; THENCE North 89°58'32" West a distance of 292.82 feet; THENCE North 04°57'42" West a distance of 137.18 feet; THENCE North 38°29'57" West a distance of 124.22 feet; THENCE North 52°54'13" West a distance of 282.38 feet to the POINT OF BEGINNING.

Said tract contains 532,987 square feet or 12.236 acres, more or less.



**CURVE TABLE**

CURVE	BEARING	ANGLE	LENGTH	CHORD	CHORD BEARING	CHORD LENGTH
1	N 47°20'37" W	174°19'23"	5.11	5.11	S 52°26'34" E	5.11
2	N 47°20'37" W	174°19'23"	5.11	5.11	S 52°26'34" E	5.11
3	N 47°20'37" W	174°19'23"	5.11	5.11	S 52°26'34" E	5.11
4	N 47°20'37" W	174°19'23"	5.11	5.11	S 52°26'34" E	5.11
5	N 47°20'37" W	174°19'23"	5.11	5.11	S 52°26'34" E	5.11
6	N 47°20'37" W	174°19'23"	5.11	5.11	S 52°26'34" E	5.11
7	N 47°20'37" W	174°19'23"	5.11	5.11	S 52°26'34" E	5.11
8	N 47°20'37" W	174°19'23"	5.11	5.11	S 52°26'34" E	5.11
9	N 47°20'37" W	174°19'23"	5.11	5.11	S 52°26'34" E	5.11
10	N 47°20'37" W	174°19'23"	5.11	5.11	S 52°26'34" E	5.11
11	N 47°20'37" W	174°19'23"	5.11	5.11	S 52°26'34" E	5.11
12	N 47°20'37" W	174°19'23"	5.11	5.11	S 52°26'34" E	5.11
13	N 47°20'37" W	174°19'23"	5.11	5.11	S 52°26'34" E	5.11
14	N 47°20'37" W	174°19'23"	5.11	5.11	S 52°26'34" E	5.11
15	N 47°20'37" W	174°19'23"	5.11	5.11	S 52°26'34" E	5.11
16	N 47°20'37" W	174°19'23"	5.11	5.11	S 52°26'34" E	5.11

**LINE TABLE**

LINE NUMBER	BEARING	LENGTH
1	N 47°20'37" W	5.11
2	N 47°20'37" W	5.11
3	N 47°20'37" W	5.11
4	N 47°20'37" W	5.11
5	N 47°20'37" W	5.11
6	N 47°20'37" W	5.11
7	N 47°20'37" W	5.11
8	N 47°20'37" W	5.11
9	N 47°20'37" W	5.11
10	N 47°20'37" W	5.11
11	N 47°20'37" W	5.11
12	N 47°20'37" W	5.11
13	N 47°20'37" W	5.11
14	N 47°20'37" W	5.11
15	N 47°20'37" W	5.11
16	N 47°20'37" W	5.11

NOTE: COMMON OPEN SPACE AREAS WILL BE OWNED AND MAINTAINED BY MANDATORY PROPERTY OWNERS ASSOCIATION.

UNLESS OTHERWISE NOTED, 1/4" W/ C.A. 6333 GPS WERE SET AT ALL PROPERTY CORNERS.

BENCHMARK: BRASS CAP AT INTERSECTION OF SIERRA STR. & UNPLATTED BRD. LANE. ELEV. =

D/E = DRAINAGE EASEMENT  
S/W/E = SIDEWALK EASEMENT  
PED/E = PEDESTRIAN EASEMENT  
L/A = LIMITS OF NO ACCESS  
U/E = UTILITY EASEMENT  
B/L = BUILDING LINE  
-1000- = ADDRESS

Date: November 28, 2012  
SMC Consulting Engineers, P.C.  
815 W. Main Street  
Oklahoma City, OK 73104  
Ph: (405) 232-7715  
Oklahoma CA#044 Exp: 6-31-2013

RED CANYON RANCH SECTION 4 P.U.D.  
FINAL PLAT  
SHEET 2 OF 2

NOTE: THE UNIT OF MEASUREMENT SHOWN FOR ALL DIMENSIONS ON THE FINAL PLAT IS U.S. SURVEY FEET.