

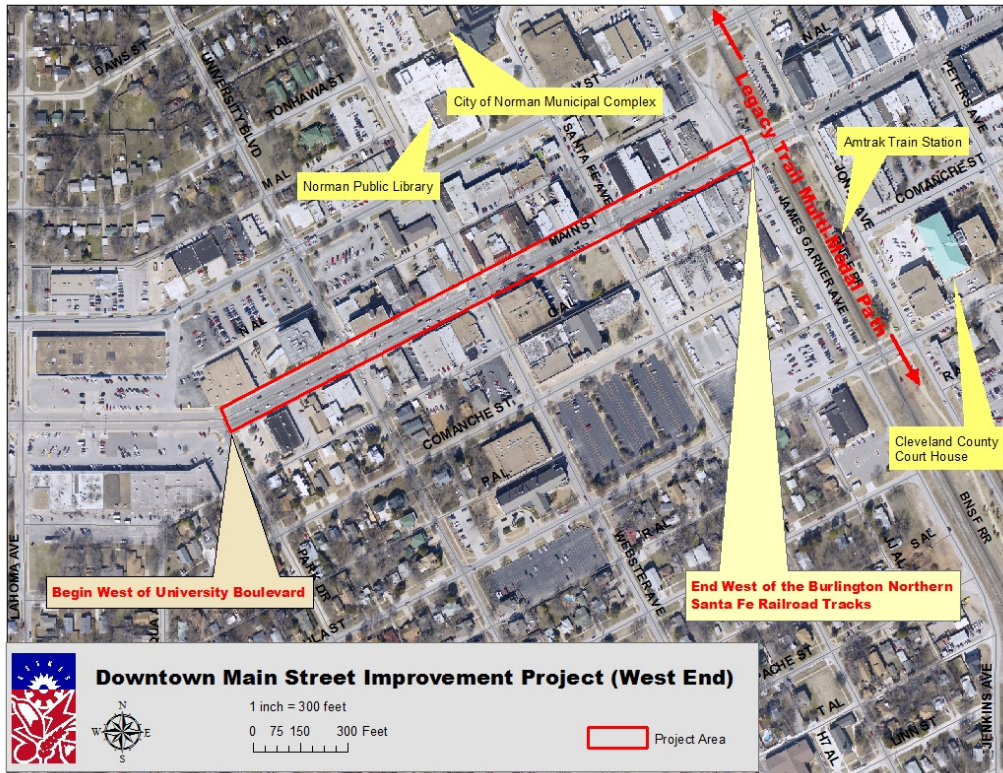
Downtown Main Street Improvements Project – West End (Transportation Enhancement)

Extends from west of University Blvd. to Railroad Track.
In conjunction with two other projects (STP-UZA project to interconnect traffic signals and upgrade lighting, and Water Line Replacement project.

Landscaping
Sidewalks
Street Furniture Sidewalks

ADA Ramps
Decorative Lighting
Cobblestone Paving Band

Project Activity	City	Federal		Private	Total
		Transportation Enhancement	STP-UZA		
Design	\$89,582	\$101,133			\$190,715
Utilities	\$412,000				\$412,000
Construction	\$548,040	\$498,867	\$470,000	\$75,000	\$1,591,907
Total	\$1,049,622	\$1,070,000		\$75,000	\$2,194,622



The “look” before improvements



The “look” after improvements

