

**STORM DRAINAGE DETENTION FACILITY CASEMENT**

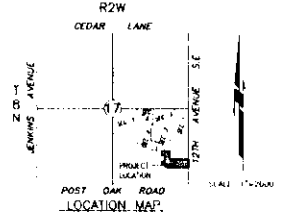
STORM DRAINAGE DETENTION FACILITY CASEMENT  
 SECTION 17, T8N, R2W I.M.  
 NORMAN, CLEVELAND COUNTY, OKLAHOMA



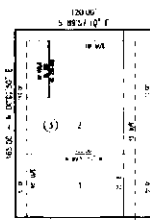
SCALE 1" = 200'

TOTAL LOTS = 34

**FINAL PLAT**  
**EAGLE CLIFF SOUTH ADDITION SECTION 7**  
 A PART OF THE S.E. 1/4, SECTION 17, T8N, R2W I.M.  
 NORMAN, CLEVELAND COUNTY, OKLAHOMA



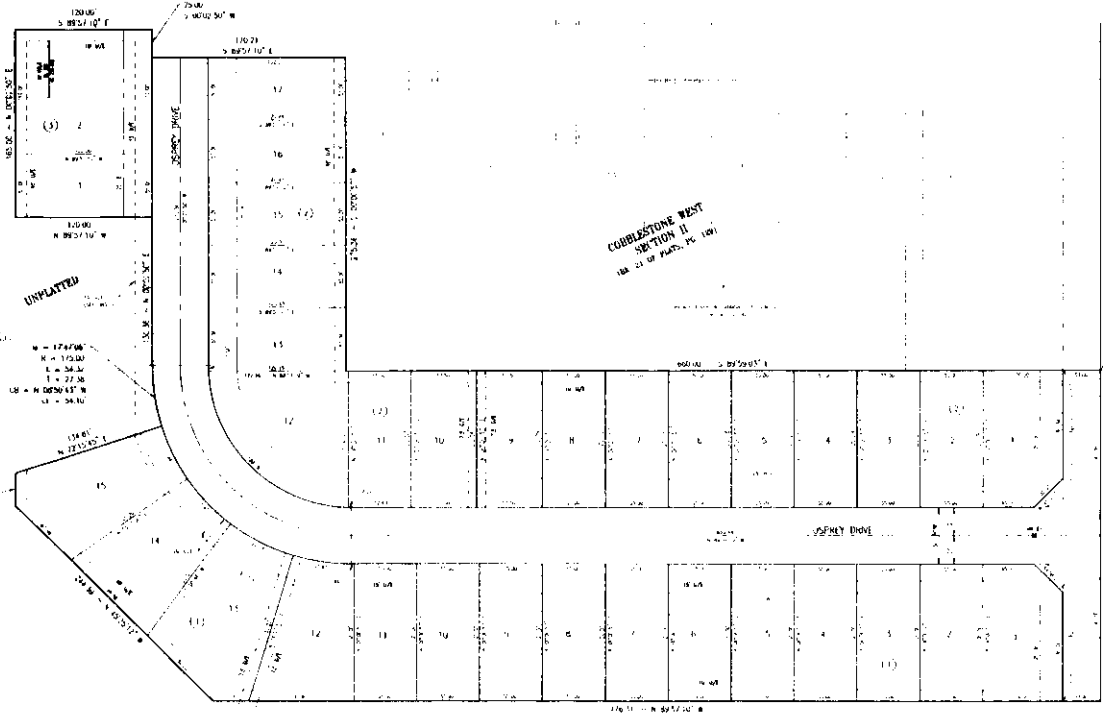
EAGLE CLIFF SOUTH  
 ADDITION SECTION 2  
 (A PART OF PLAT, PG. 174)



UNPLATTED

W = 174.00'  
 N = 170.00'  
 E = 30.00'  
 S = 170.00'  
 W = 174.00'

COBBLESTONE WEST  
 SECTION II  
 (A PART OF PLAT, PG. 109)



P.O.B.

UNPLATTED

**LEGAL DESCRIPTION**

A tract of land lying in the Southeast Quarter (S.E. 1/4) of Section Seventeen (17) Township Eight North (8N) Range Two West (2W) of the Indian Meridian, Norman, Cleveland County, Oklahoma, being more particularly described as follows:

Beginning at the Northwest corner of said S.E. 1/4; THENCE South 89°57' West along the East line of said S.E. 1/4 a distance of 1740.00 feet to the POINT OF BEGINNING; thence along the Southeast corner of the said East part of COBBLESTONE WEST SECTION II (a part of Plat No. 174 of Page 174);

THENCE continuing South 89°57' West along said East line a distance of 740.00 feet; THENCE North 89°57' West a distance of 740.00 feet; THENCE North 45°25'12" West a distance of 244.76 feet; THENCE North 45°25'12" East a distance of 244.76 feet; THENCE North 45°25'12" East a distance of 124.88 feet to a point on a non-tangent curve; THENCE along a curve to the right having a radius of 170.00 feet said curve subtended by a chord which bears North 38°14' West a distance of 34.10 feet; with an arc length of 34.10 feet; THENCE North 60°02'00" East a distance of 130.00 feet; THENCE North 89°57'10" West a distance of 170.00 feet; THENCE North 89°57'50" East a distance of 163.00 feet to a point on the South line of the East half part of EAGLE CLIFF SOUTH ADDITION SECTION 2 (a part of Plat No. 20 of Page 174); THENCE along the boundary of said East part the following three (3) courses:

- 1) South 89°57'10" East a distance of 120.00 feet
- 2) South 89°57'10" East a distance of 25.00 feet
- 3) South 89°57'10" East a distance of 170.21 feet to a point on the East line of the East half part of COBBLESTONE WEST SECTION II.

THENCE along the boundary of said East part the following two (2) courses:

- 1) South 89°57'10" West a distance of 275.36 feet.
- 2) South 89°57'10" East a distance of 800.00 feet to the POINT OF BEGINNING.

Said tract contains 7.32 acres, more or less.

**CURVE TABLE**

COMPILED BY: [Name]

1745 = DRAINAGE EASEMENT  
 1740 = EASELTS OF PLAT 174  
 170 = DRAINAGE EASEMENT  
 170 = NATIONAL 170  
 -1000 = ADDRESS

DATE: [Date]  
 BY: [Name]

Date: [Date]  
 SMC Consulting Engineers, P.C.  
 815 W. Main Street  
 Oklahoma City, OK 73106  
 Ph: (405) 237-1715  
 Oklahoma CAP604 Exp. 8/30/2021

NOTE: THE UNIT OF MEASUREMENT SHOWN FOR ALL DIMENSIONS ON THE FINAL PLAT IS U.S. SURVEY FEET.

EAGLE CLIFF SOUTH ADDITION SECTION 7  
 PLAT NO. 174 OF PAGE 174