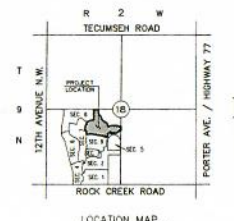


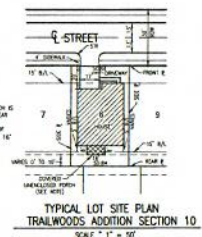
FINAL PLAT
TRAILWOODS ADDITION SECTION 10
 A PLANNED UNIT DEVELOPMENT
 A REPLAT OF A PORTION OF BLOCK "H" OF TRAILWOODS ADDITION SECTION 2,
 AND A PART OF THE S.W. 1/4, SECTION 18, T9N, R2W I.M.
 NORMAN, CLEVELAND COUNTY, OKLAHOMA

STORM DRAINAGE DETENTION FACILITY EASEMENT

STORM DRAINAGE DETENTION FACILITY EASEMENTS ARE HEREBY ESTABLISHED AS SHOWN TO PROVIDE FOR DETENTION OF STORM SURFACE WATER AND CONSTRUCTED AS APPROVED BY THE CITY ENGINEER. ALL MAINTENANCE WITHIN THE DRAINAGE DETENTION FACILITY EASEMENT SHALL BE THE DUTY AND RESPONSIBILITY OF THE PROPERTY OWNERS ASSOCIATION IN THE PLAN OF TRAILWOODS ADDITION SECTION 10. HOWEVER, IF MAINTENANCE IS NEGLECTED OR SUBJECT TO OTHER UNUSUAL CIRCUMSTANCES AND IS DETERMINED TO BE A HAZARD OR THREAT TO PUBLIC SAFETY BY THE CITY ENGINEER, CORRECTIVE MAINTENANCE MAY BE PERFORMED BY THE GOVERNING JURISDICTION WITH COSTS ASSESSED TO AND BORNE UPON SAID PROPERTY OWNERS ASSOCIATION. OFFICIALS REPRESENTING THE ENGINEERING DIVISION, PUBLIC WORKS DEPARTMENT, SHALL HAVE THE RIGHT TO ENTER UPON THE EASEMENT FOR PURPOSES OF PERIODIC INSPECTION AND/OR CORRECTIVE MAINTENANCE OF THE FACILITY. UPON RECEIVING WRITTEN APPROVAL FROM THE ENGINEERING DIVISION, PUBLIC WORKS DEPARTMENT, PROPERTY OWNERS ASSOCIATION MAY CONSTRUCT IMPROVEMENTS WITHIN THE EASEMENT, PROVIDED THE IMPROVEMENT DOES NOT INTERFERE WITH THE FUNCTION OF THE DETENTION FACILITY.



SCALE: 1" = 60'
 TOTAL LOTS = 56
 PLAT AREA = 13.426 ACRES
 BASIS OF BEARING FOR THIS FINAL PLAT IS N 89°46'45" W AS SHOWN ON THE SOUTH LINE OF SEC. 18



CURVE TABLE

STATION	CHORD BEARING	CHORD LENGTH	CHORD BEARING	CHORD LENGTH	CHORD BEARING	CHORD LENGTH
1+00.00	N 89°46'45" W	100.00	S 89°46'45" E	100.00	N 89°46'45" W	100.00
1+10.00	N 89°46'45" W	110.00	S 89°46'45" E	110.00	N 89°46'45" W	110.00
1+20.00	N 89°46'45" W	120.00	S 89°46'45" E	120.00	N 89°46'45" W	120.00
1+30.00	N 89°46'45" W	130.00	S 89°46'45" E	130.00	N 89°46'45" W	130.00
1+40.00	N 89°46'45" W	140.00	S 89°46'45" E	140.00	N 89°46'45" W	140.00
1+50.00	N 89°46'45" W	150.00	S 89°46'45" E	150.00	N 89°46'45" W	150.00
1+60.00	N 89°46'45" W	160.00	S 89°46'45" E	160.00	N 89°46'45" W	160.00
1+70.00	N 89°46'45" W	170.00	S 89°46'45" E	170.00	N 89°46'45" W	170.00
1+80.00	N 89°46'45" W	180.00	S 89°46'45" E	180.00	N 89°46'45" W	180.00
1+90.00	N 89°46'45" W	190.00	S 89°46'45" E	190.00	N 89°46'45" W	190.00
2+00.00	N 89°46'45" W	200.00	S 89°46'45" E	200.00	N 89°46'45" W	200.00
2+10.00	N 89°46'45" W	210.00	S 89°46'45" E	210.00	N 89°46'45" W	210.00
2+20.00	N 89°46'45" W	220.00	S 89°46'45" E	220.00	N 89°46'45" W	220.00
2+30.00	N 89°46'45" W	230.00	S 89°46'45" E	230.00	N 89°46'45" W	230.00
2+40.00	N 89°46'45" W	240.00	S 89°46'45" E	240.00	N 89°46'45" W	240.00
2+50.00	N 89°46'45" W	250.00	S 89°46'45" E	250.00	N 89°46'45" W	250.00
2+60.00	N 89°46'45" W	260.00	S 89°46'45" E	260.00	N 89°46'45" W	260.00
2+70.00	N 89°46'45" W	270.00	S 89°46'45" E	270.00	N 89°46'45" W	270.00
2+80.00	N 89°46'45" W	280.00	S 89°46'45" E	280.00	N 89°46'45" W	280.00
2+90.00	N 89°46'45" W	290.00	S 89°46'45" E	290.00	N 89°46'45" W	290.00
3+00.00	N 89°46'45" W	300.00	S 89°46'45" E	300.00	N 89°46'45" W	300.00
3+10.00	N 89°46'45" W	310.00	S 89°46'45" E	310.00	N 89°46'45" W	310.00
3+20.00	N 89°46'45" W	320.00	S 89°46'45" E	320.00	N 89°46'45" W	320.00
3+30.00	N 89°46'45" W	330.00	S 89°46'45" E	330.00	N 89°46'45" W	330.00
3+40.00	N 89°46'45" W	340.00	S 89°46'45" E	340.00	N 89°46'45" W	340.00
3+50.00	N 89°46'45" W	350.00	S 89°46'45" E	350.00	N 89°46'45" W	350.00
3+60.00	N 89°46'45" W	360.00	S 89°46'45" E	360.00	N 89°46'45" W	360.00
3+70.00	N 89°46'45" W	370.00	S 89°46'45" E	370.00	N 89°46'45" W	370.00
3+80.00	N 89°46'45" W	380.00	S 89°46'45" E	380.00	N 89°46'45" W	380.00
3+90.00	N 89°46'45" W	390.00	S 89°46'45" E	390.00	N 89°46'45" W	390.00
4+00.00	N 89°46'45" W	400.00	S 89°46'45" E	400.00	N 89°46'45" W	400.00
4+10.00	N 89°46'45" W	410.00	S 89°46'45" E	410.00	N 89°46'45" W	410.00
4+20.00	N 89°46'45" W	420.00	S 89°46'45" E	420.00	N 89°46'45" W	420.00
4+30.00	N 89°46'45" W	430.00	S 89°46'45" E	430.00	N 89°46'45" W	430.00
4+40.00	N 89°46'45" W	440.00	S 89°46'45" E	440.00	N 89°46'45" W	440.00
4+50.00	N 89°46'45" W	450.00	S 89°46'45" E	450.00	N 89°46'45" W	450.00
4+60.00	N 89°46'45" W	460.00	S 89°46'45" E	460.00	N 89°46'45" W	460.00
4+70.00	N 89°46'45" W	470.00	S 89°46'45" E	470.00	N 89°46'45" W	470.00
4+80.00	N 89°46'45" W	480.00	S 89°46'45" E	480.00	N 89°46'45" W	480.00
4+90.00	N 89°46'45" W	490.00	S 89°46'45" E	490.00	N 89°46'45" W	490.00
5+00.00	N 89°46'45" W	500.00	S 89°46'45" E	500.00	N 89°46'45" W	500.00
5+10.00	N 89°46'45" W	510.00	S 89°46'45" E	510.00	N 89°46'45" W	510.00
5+20.00	N 89°46'45" W	520.00	S 89°46'45" E	520.00	N 89°46'45" W	520.00
5+30.00	N 89°46'45" W	530.00	S 89°46'45" E	530.00	N 89°46'45" W	530.00
5+40.00	N 89°46'45" W	540.00	S 89°46'45" E	540.00	N 89°46'45" W	540.00
5+50.00	N 89°46'45" W	550.00	S 89°46'45" E	550.00	N 89°46'45" W	550.00
5+60.00	N 89°46'45" W	560.00	S 89°46'45" E	560.00	N 89°46'45" W	560.00
5+70.00	N 89°46'45" W	570.00	S 89°46'45" E	570.00	N 89°46'45" W	570.00
5+80.00	N 89°46'45" W	580.00	S 89°46'45" E	580.00	N 89°46'45" W	580.00
5+90.00	N 89°46'45" W	590.00	S 89°46'45" E	590.00	N 89°46'45" W	590.00
6+00.00	N 89°46'45" W	600.00	S 89°46'45" E	600.00	N 89°46'45" W	600.00
6+10.00	N 89°46'45" W	610.00	S 89°46'45" E	610.00	N 89°46'45" W	610.00
6+20.00	N 89°46'45" W	620.00	S 89°46'45" E	620.00	N 89°46'45" W	620.00
6+30.00	N 89°46'45" W	630.00	S 89°46'45" E	630.00	N 89°46'45" W	630.00
6+40.00	N 89°46'45" W	640.00	S 89°46'45" E	640.00	N 89°46'45" W	640.00
6+50.00	N 89°46'45" W	650.00	S 89°46'45" E	650.00	N 89°46'45" W	650.00
6+60.00	N 89°46'45" W	660.00	S 89°46'45" E	660.00	N 89°46'45" W	660.00
6+70.00	N 89°46'45" W	670.00	S 89°46'45" E	670.00	N 89°46'45" W	670.00
6+80.00	N 89°46'45" W	680.00	S 89°46'45" E	680.00	N 89°46'45" W	680.00
6+90.00	N 89°46'45" W	690.00	S 89°46'45" E	690.00	N 89°46'45" W	690.00
7+00.00	N 89°46'45" W	700.00	S 89°46'45" E	700.00	N 89°46'45" W	700.00
7+10.00	N 89°46'45" W	710.00	S 89°46'45" E	710.00	N 89°46'45" W	710.00
7+20.00	N 89°46'45" W	720.00	S 89°46'45" E	720.00	N 89°46'45" W	720.00
7+30.00	N 89°46'45" W	730.00	S 89°46'45" E	730.00	N 89°46'45" W	730.00
7+40.00	N 89°46'45" W	740.00	S 89°46'45" E	740.00	N 89°46'45" W	740.00
7+50.00	N 89°46'45" W	750.00	S 89°46'45" E	750.00	N 89°46'45" W	750.00
7+60.00	N 89°46'45" W	760.00	S 89°46'45" E	760.00	N 89°46'45" W	760.00
7+70.00	N 89°46'45" W	770.00	S 89°46'45" E	770.00	N 89°46'45" W	770.00
7+80.00	N 89°46'45" W	780.00	S 89°46'45" E	780.00	N 89°46'45" W	780.00
7+90.00	N 89°46'45" W	790.00	S 89°46'45" E	790.00	N 89°46'45" W	790.00
8+00.00	N 89°46'45" W	800.00	S 89°46'45" E	800.00	N 89°46'45" W	800.00
8+10.00	N 89°46'45" W	810.00	S 89°46'45" E	810.00	N 89°46'45" W	810.00
8+20.00	N 89°46'45" W	820.00	S 89°46'45" E	820.00	N 89°46'45" W	820.00
8+30.00	N 89°46'45" W	830.00	S 89°46'45" E	830.00	N 89°46'45" W	830.00
8+40.00	N 89°46'45" W	840.00	S 89°46'45" E	840.00	N 89°46'45" W	840.00
8+50.00	N 89°46'45" W	850.00	S 89°46'45" E	850.00	N 89°46'45" W	850.00
8+60.00	N 89°46'45" W	860.00	S 89°46'45" E	860.00	N 89°46'45" W	860.00
8+70.00	N 89°46'45" W	870.00	S 89°46'45" E	870.00	N 89°46'45" W	870.00
8+80.00	N 89°46'45" W	880.00	S 89°46'45" E	880.00	N 89°46'45" W	880.00
8+90.00	N 89°46'45" W	890.00	S 89°46'45" E	890.00	N 89°46'45" W	890.00
9+00.00	N 89°46'45" W	900.00	S 89°46'45" E	900.00	N 89°46'45" W	900.00
9+10.00	N 89°46'45" W	910.00	S 89°46'45" E	910.00	N 89°46'45" W	910.00
9+20.00	N 89°46'45" W	920.00	S 89°46'45" E	920.00	N 89°46'45" W	920.00
9+30.00	N 89°46'45" W	930.00	S 89°46'45" E	930.00	N 89°46'45" W	930.00
9+40.00	N 89°46'45" W	940.00	S 89°46'45" E	940.00	N 89°46'45" W	940.00
9+50.00	N 89°46'45" W	950.00	S 89°46'45" E	950.00	N 89°46'45" W	950.00
9+60.00	N 89°46'45" W	960.00	S 89°46'45" E	960.00	N 89°46'45" W	960.00
9+70.00	N 89°46'45" W	970.00	S 89°46'45" E	970.00	N 89°46'45" W	970.00
9+80.00	N 89°46'45" W	980.00	S 89°46'45" E	980.00	N 89°46'45" W	980.00
9+90.00	N 89°46'45" W	990.00	S 89°46'45" E	990.00	N 89°46'45" W	990.00
10+00.00	N 89°46'45" W	1000.00	S 89°46'45" E	1000.00	N 89°46'45" W	1000.00

BENCHMARK: BRASS CAP AT INTERSECTION OF BLUE FISH RD. & LEOPARD LAY DRIVE.
 ELEV. =

P.O.C.
 S.E. COR. S.W. 1/4 SEC. 18, T9N, R2W, I.M.
 FND. CUT X

S.W. COR. S.W. 1/4 SEC. 18, T9N, R2W, I.M.
 FND. CUT X
 FND. CUT X
 FOUND #5 BAR, 1.6" E. & 0.5" N.
 S.W./E = SANITARY SEWER EASEMENT
 ROW = RIGHT OF WAY
 D/E = DRAINAGE EASEMENT
 P/D/E = PEDESTRIAN EASEMENT
 LNA = LIMITS OF NO ACCESS
 U/E = UTILITY EASEMENT
 B/L = BUILDING LINE
 -1000- = ADDRESS

Date: December 28, 2016
 SMC Consulting Engineers, P.C.
 215 N. Main Street
 Oklahoma City, OK 73106
 Ph: (405) 232-7715
 Oklahoma CA#64 Exp. 6-30-2017

TRAILWOODS ADDITION SECTION 10
 A PLANNED UNIT DEVELOPMENT
 FINAL PLAT SHEET 2 OF 2

NOTE: THE UNIT OF MEASUREMENT SHOWN FOR ALL DIMENSIONS ON THE FINAL PLAT IS U.S. SURVEY FEET.