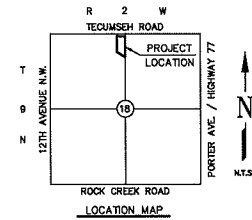
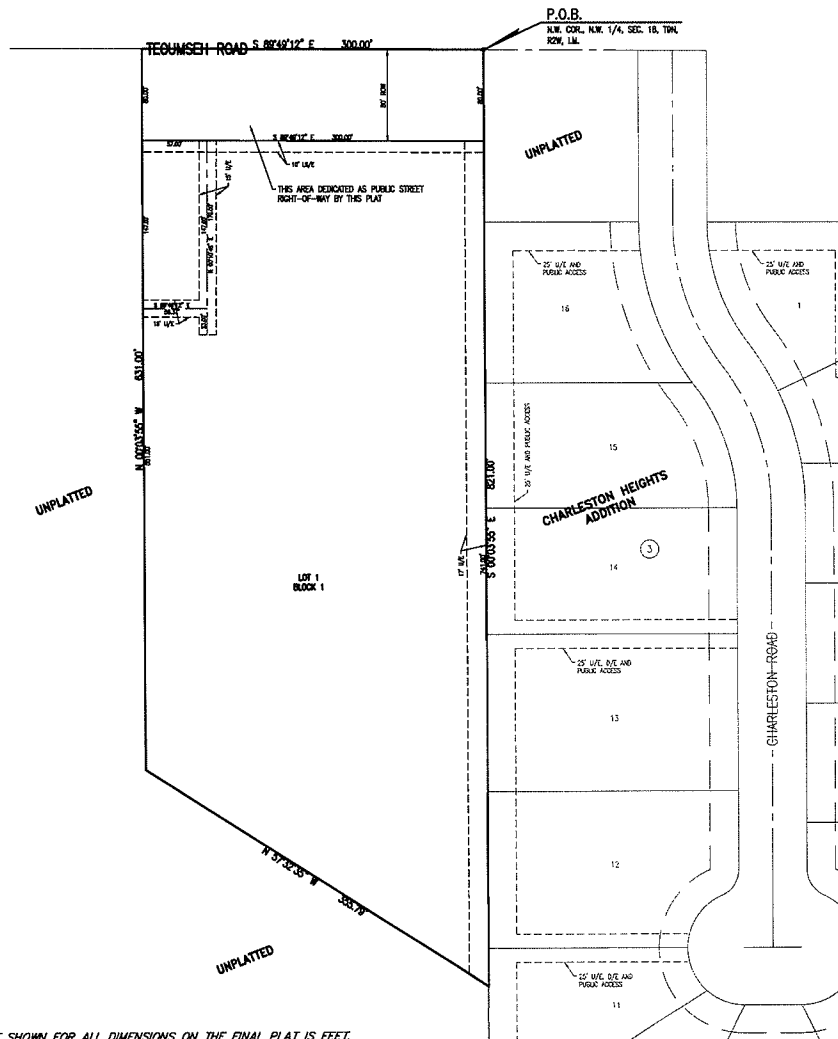


FINAL PLAT  
**HEARTLAND CHURCH ADDITION**  
A PLANNED UNIT DEVELOPMENT  
A PART OF THE N.W. 1/4, SECTION 18, T9N, R2W I.M.  
NORMAN, CLEVELAND COUNTY, OKLAHOMA



SCALE: 1" = 60'

THE BEARING OF S 89°48'12" E. ON THE NORTH LINE OF THE NORTHWEST QUARTER OF SECTION 18 PER THE CITY OF NORMAN G.L.S. DATUM WAS USED AS THE BASIS OF BEARING FOR THIS PLAT.

TOTAL LOTS = 1

BENCHMARK: SET BRASS CAP AT  
N.E. COR. OF THE N.W. 1/4  
ELEV. "

D/E = DRAINAGE EASEMENT  
ACCESS/E = ACCESS EASEMENT  
LNA = LIMITS OF NO ACCESS  
U/E = UTILITY EASEMENT  
B/L = BUILDING LINE  
-1000- = ADDRESS

NOTE: THE UNIT OF MEASUREMENT SHOWN FOR ALL DIMENSIONS ON THE FINAL PLAT IS FEET.

Date: October 22, 2012  
SMC Consulting Engineers, P.C.  
815 W. Main Street  
Oklahoma City, OK 73106  
Ph: (405) 232-7715  
Oklahoma CA#484 Exp. 6/30/13

---

HEARTLAND CHURCH ADDITION  
A PLANNED UNIT DEVELOPMENT  
FINAL PLAT SHEET 2 OF 2