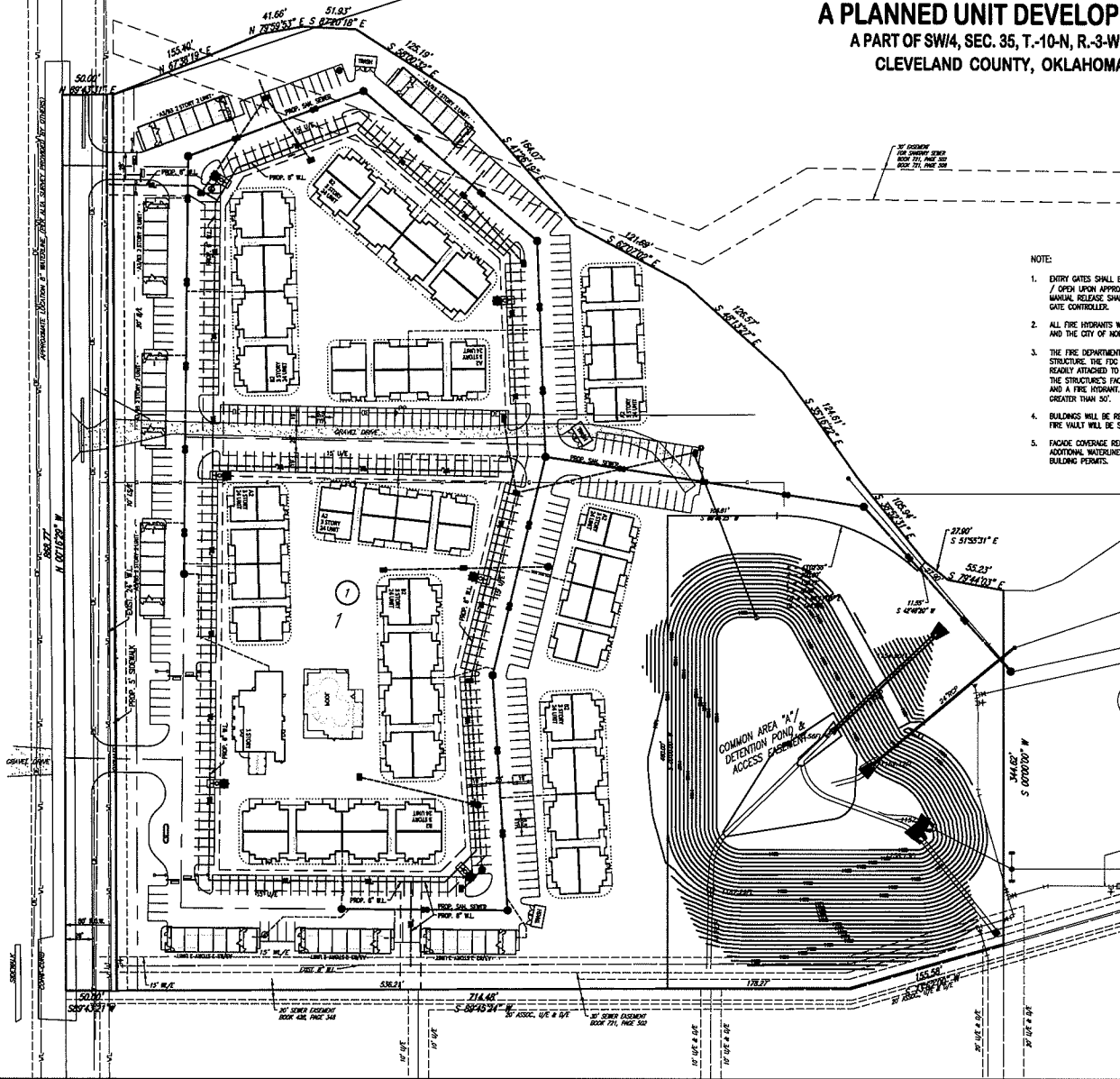
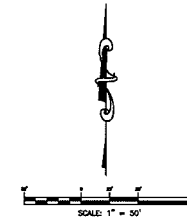
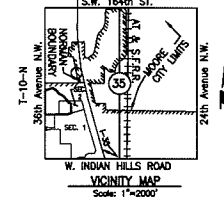


FINAL SITE DEVELOPMENT PLAN  
**COMMERCE PARKWAY ADDITION SECTION 3**  
 A PLANNED UNIT DEVELOPMENT  
 A PART OF SW1/4, SEC. 35, T.-10-N, R.-3-W, I.M.  
 CLEVELAND COUNTY, OKLAHOMA



NOTE:

1. ENTRY GATES SHALL BE PROVIDED WITH A SIREN OPERATING SENSOR (SOS) THAT WILL RETRACT / OPEN UPON APPROACH OF EMERGENCY VEHICLES WITH SIRENS OPERATING. IN ADDITION, A MANUAL RELEASE SHALL BE PROVIDED TO RELEASE THE GATES UPON POWER LOSS TO THE GATE CONTROLLER.
2. ALL FIRE HYDRANTS WILL BE LOCATED AND INSTALLED IN ACCORDANCE WITH THE FINAL PLANS AND THE CITY OF NORMAN STANDARDS AND SPECIFICATIONS.
3. THE FIRE DEPARTMENT CONNECTION (FDC) SHALL BE LOCATED ON THE STREET SIDE OF ANY STRUCTURE. THE FDC SHALL BE LOCATED AND ARRANGED SO THAT THE HOSE LINES CAN BE READILY ATTACHED TO THE INLETS WITHOUT INTERFERENCE FROM OBJECTS, WHERE MOUNTED ON THE STRUCTURE'S FACADE. A DISTANCE NO GREATER THAN 100' SHALL BE BETWEEN THE FDC AND A FIRE HYDRANT, WHERE THEY ARE REMOTE FROM THE STRUCTURE. A DISTANCE NO GREATER THAN 50'.
4. BUILDINGS WILL BE REQUIRED TO BE PROTECTED WITH AN AUTOMATIC SPRINKLER SYSTEM. THE FIRE VAULT WILL BE SHOWN ON THE FINAL PLAT SITE PLAN AND CONSTRUCTION PLANS.
5. FAÇADE COVERAGE REQUIREMENTS FOR EACH LOT WILL BE MET AT BUILDING PERMIT STAGE. IF ADDITIONAL WATERWORKS AND FIRE HYDRANTS ARE NEEDED, THEY WILL BE SUBMITTED WITH THE BUILDING PERMITS.



© SMC CONSULTING ENGINEERS, P.C. ALL RIGHTS RESERVED. THESE DOCUMENTS ARE NOT BE LOANED FOR ANY PURPOSES WITHOUT PRIOR WRITTEN PERMISSION FROM SMC CONSULTING ENGINEERS, P.C.

COMMERCE PARKWAY ADDITION  
 SECTION 3

36th AVE. N.W. & INDIAN HILLS RD.  
 NORMAN, OKLAHOMA

**SMC**  
 SMC CONSULTING ENGINEERS, P.C.  
 1000 N. UNIVERSITY BLVD., SUITE 100  
 NORMAN, OKLAHOMA 73069  
 TEL: 405-875-1234 FAX: 405-875-1235  
 WWW.SMCENGINEERS.COM

PROJECT INFORMATION  
 SHEET NO. 1/15  
 SCALE: 1" = 80'  
 DESIGNER: L. HICKLER  
 P.E. NUMBER: 14118

FINAL SITE DEVELOPMENT PLAN

SHEET NO. 1