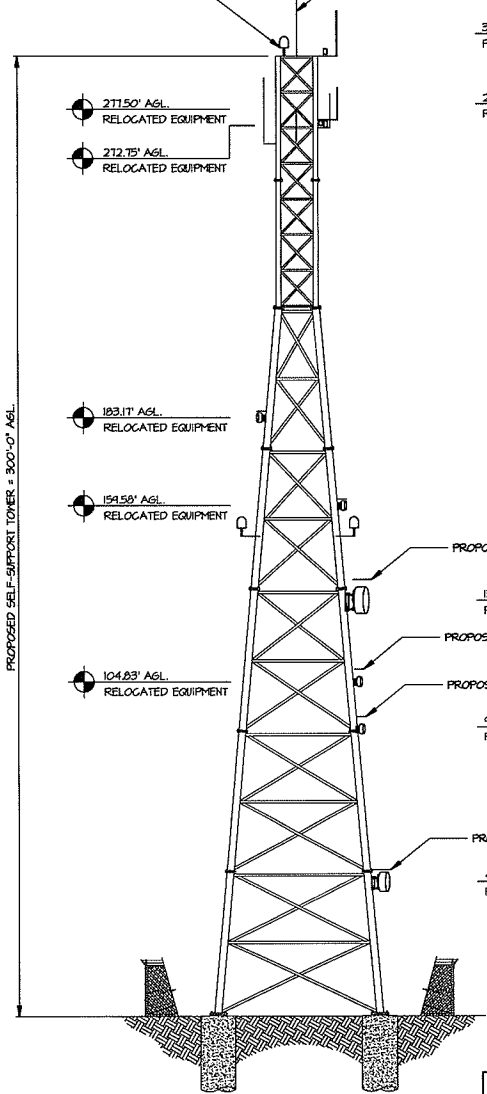


PROPOSED FAA OBSTRUCTION TOWER BEACON LIGHT (AS REQUIRED BY FAA). LIGHTING PROTECTION



TOWER ELEVATIONS
NOT TO SCALE

** ALL DIMENSIONS ARE CENTERLINE OF ANTENNA OR DISH. REFERENCE DATUM NAD83

Entry Port Layout			
Micro wave	Micro wave	Micro wave	
P25 TX	P25 RX	P25 Test	

Color Code chart	
Antenna Line	Color Code
P25 TX	
P25 RX	
TTA	
Microwave	
NE to ECC	Label to Site
NE to CC	Label to Site
NE to FS28	Label to Site

Tower Loading NorthEast			
	P25 TX	P25 RX	Tower Top Amplifier Model
Antenna Model	DS7A08F36U-N	DS7C10F36U-N	CP00732 (8 LB.)
Antenna height	285 ft. (C.L.)	307 ft. (C.L.)	307 ft. (C.L.)
Coax Line Type	1 5/8" Foam	7/8" Foam	1/2" Foam
Coax Line Length	335 ft.	357 ft.	357 ft.
Antenna length	10.9 ft.	14.4 ft.	
Antenna weight W/O brackets	29 lb.	41 lb.	
Mounting Hardware	(12X12X12-10 LB.)	10 LB.)	
Tower Leg Placement	C	C	C
Azimuth	0°	0°	0°

Microwave loading											
Transmit Site name	Receive Site name	Radio model	Antenna type	Main/Space	Antenna size	Antenna Height	Radome Type	Line Length	# of Feeds	Feeder Type	Azimuth
Northeast Tower	ECC WT	95MPR11-L128F30-161	SU6-59BC2H	Main	6	75	Fiberglass	105	1	E-60	257.75°
Northeast Tower	Calypso Cove	TBD	TBD	TBD	TBD	TBD	TBD	TBD	TBD	TBD	TBD
Northeast Tower	FS 28	95MPR-LS12F30-206	PAD8-W57A	Main	8	130	Fiberglass	180	1	E-60	-

**NOTE: All 6' antennas will be installed with SMA-SK-60-2000A, which is the perimeter sway bar kit to achieve the 150mph operational windspeed requirement

Mounting Level (ft.)	Center Line Elevation (ft.)	Number of Antennas	Antenna Manufacturer	Antenna Model	Number of Feed Lines	Feed Line Size (in)	Note
277.50	283.00	3	-	10' x 3.5" Omni	3	1-1/4"	
	280.25	1	-	15" x 8" x 5" Junction Box			
	278.25	1	-	15" x 15" x 4" Junction Box			
272.75	277.50	3	-	6' Side Arm Mount	1	7/8"	
	278.88	1	-	10' x 3.5" Omni			
	261.63	1	-	20' x 2.9" Omni			
183.17	272.75	1	-	6' Side Arm Mount	1	5/16"	1
	187.17	1	-	3' x 3' ICE SHIELD			
	183.17	1	-	3' Dish w/ Radome			
159.58	163.58	1	-	3' x 3' ICE SHIELD	1	5/16"	
	159.58	1	-	3' Dish w/ Radome			
	159.58	1	-	TMA (9.5" x 8" x 2")			
150.33	150.33	1	-	5' x 4" Std. Pipe	-	-	
		1	-	3' HP Dish	1	3/8"	
104.83	104.83	1	Dragonwave	CHHP11B1F (TMA)	1	3/16"	
		1	-	4' x 3.5" Mount Pipe			

CITY OF NORMAN



DATE	DESCRIPTION
6/2/17	PRELIMS.
6/2/17	PRELIMS.
8/30/17	PRELIMS.
9/14/17	FINAL

NUM	DESCRIPTION
A	6/2/17 PRELIMS.
B	6/2/17 PRELIMS.
C	8/30/17 PRELIMS.
O	9/14/17 FINAL

DESIGNED:	EEC
DRAWN:	LF
CHECKED:	AP

JOB # HAR-OK-1501



C-6