

STATE OF OKLAHOMA
 COUNTY OF CLEVELAND
FILED FOR RECORD

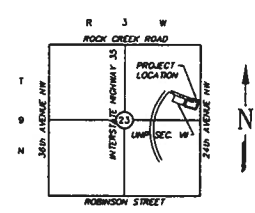
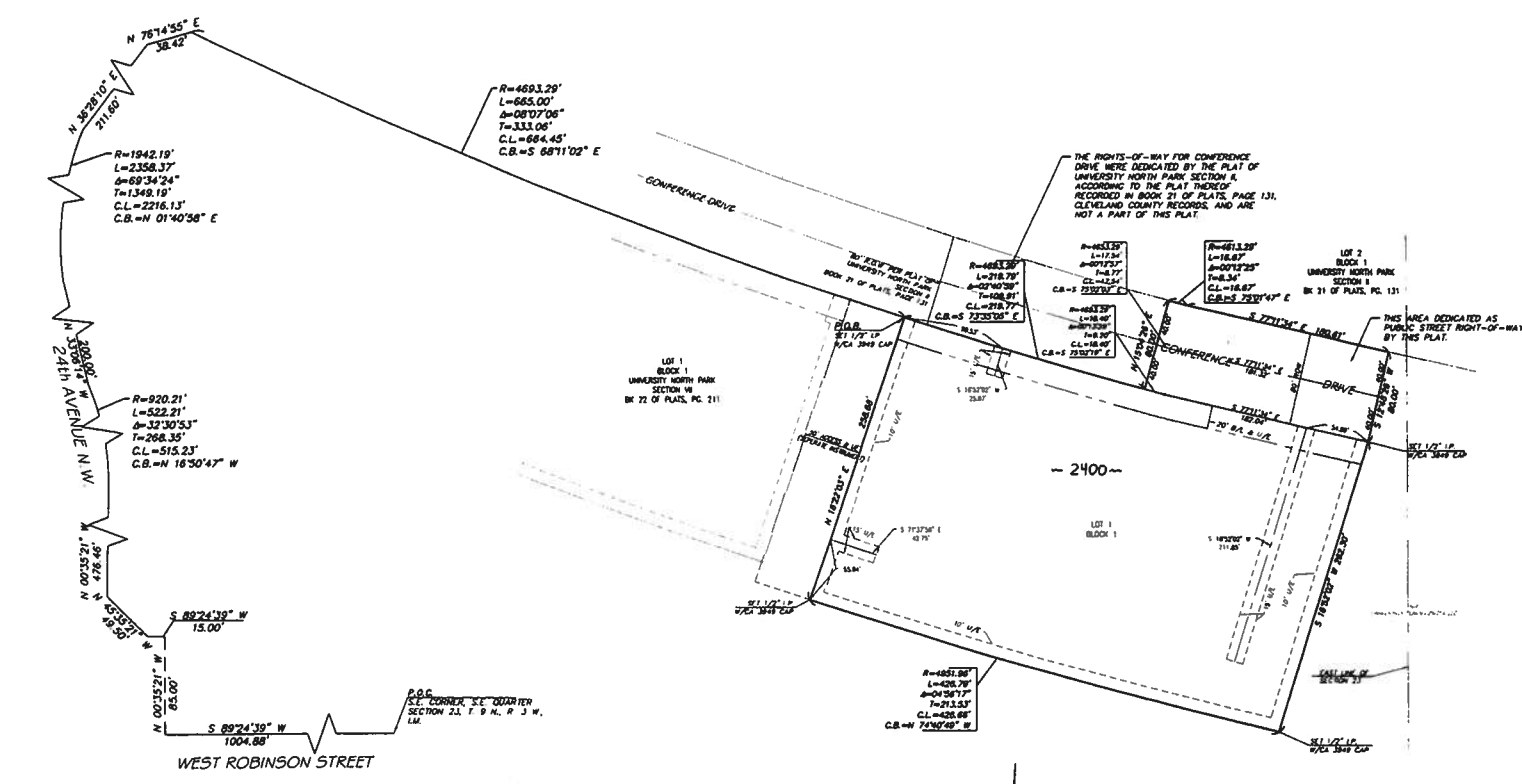
FINAL PLAT

UNIVERSITY NORTH PARK SECTION XIII

A PLANNED UNIT DEVELOPMENT
 A PART OF THE N.E. 1/4 OF SECTION 23, T 9 N, R 3 W, INDIAN MERIDIAN
 NORMAN, CLEVELAND COUNTY, OKLAHOMA

Book P 7413 41
 Page 10 of 10
 11/08/12 12:58:10
 03/27/18
 (Lands and Survey) 10

Dec 22 2012
 11:22:59 AM
 11/08/12 12:58:10
 03/27/18
 (Lands and Survey) 10

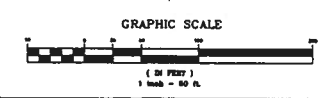


- NOTES**
1. COMMON AREAS WILL BE OWNED AND MAINTAINED BY THE PROPERTY OWNER'S ASSOCIATION.
 2. EASEMENTS SHOWN HEREON BY SPECIFIC RECORDING INFORMATION ARE SHOWN FOR REFERENCE PURPOSES ONLY AND ARE NOT DEDICATED AS A PART OF THIS PLAT.
 3. UNLESS NOTED OTHERWISE, THE UNIT OF MEASUREMENT SHOWN FOR ALL DIMENSIONS ON THE FINAL PLAT IS FEET.

BRONCHITIS BRASS CAP AT INTERSECTION 24TH AVE. & CONFLUENCE DR. ELEV. = 1182.25 FT.

TOTAL LOTS = 1

- C.A. = COMMON AREA
- D/V/E = DRAINAGE EASEMENT
- PEDE/W = PEDESTRIAN EASEMENT
- U.A. = LIMITS OF NO ACCESS
- U.E. = UTILITY EASEMENT
- B/L = BUILDING LINE
- 1800- = ADDRESS



ENGINEER OF RECORD
SMC Consulting Engineers, P.C.
 800 WEST MAIN STREET - OKLAHOMA CITY, OKLAHOMA 73104
 PHONE (405) 532-7700
 CERTIFICATE OF AUTHORIZATION NO. 484 EXPIRES JUNE 30, 2010

ENGINEERS SURVEYORS PLANNERS
SMITH ROBERTS BALDISCHWILER, LLC
 100 N.E. 6th STREET - OKLAHOMA CITY, OKLAHOMA 73104 - TELEPHONE (405) 944-7000
 CERTIFICATE OF AUTHORIZATION NO. 394 EXPIRES JUNE 30, 2010

UNIVERSITY NORTH PARK SECTION XIII
 A PLANNED UNIT DEVELOPMENT

SHEET 2 OF 2