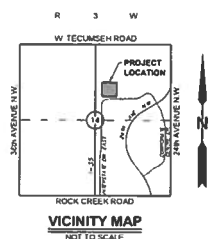
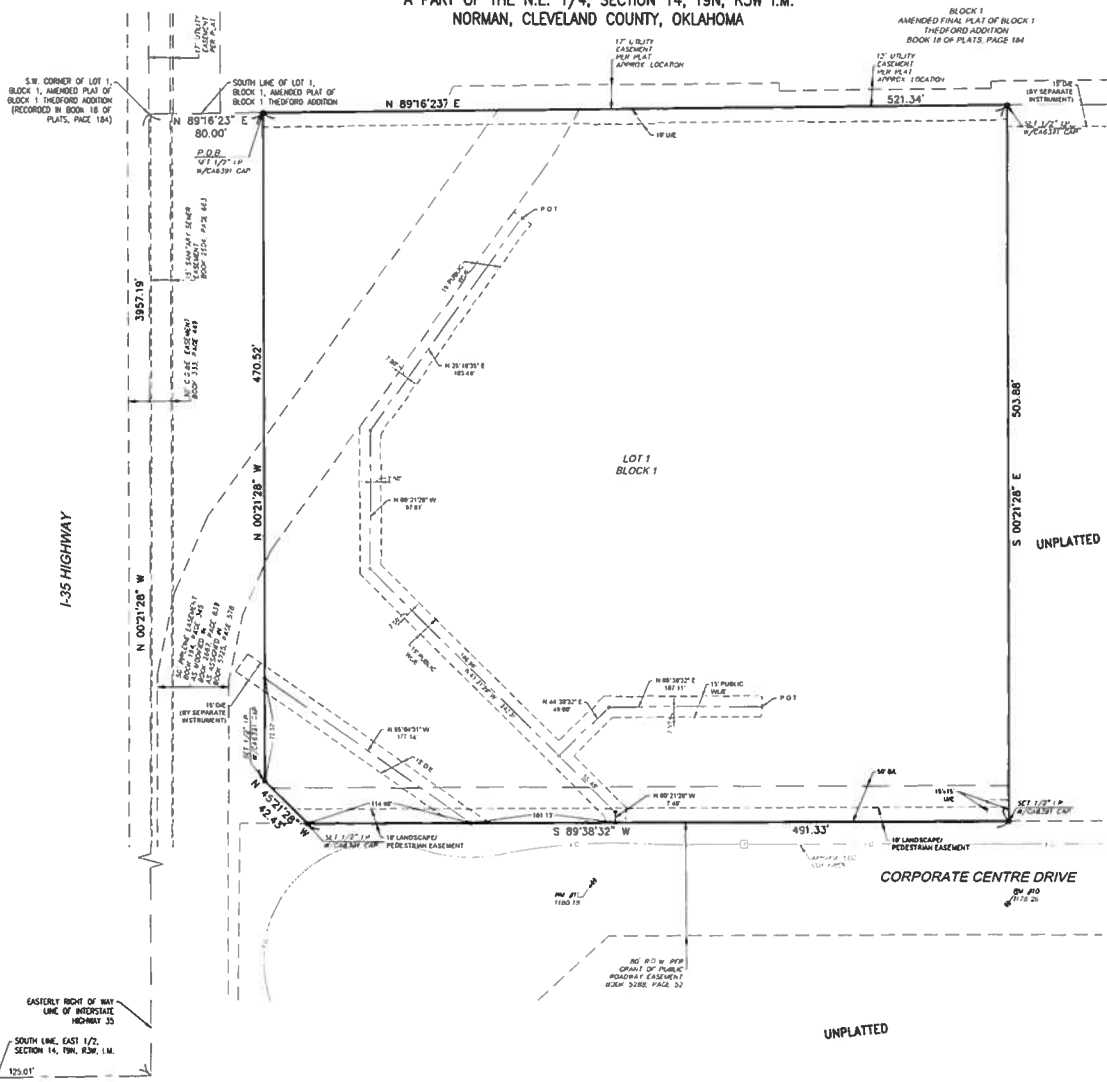


FINAL PLAT
UNIVERSITY NORTH PARK SECTION XVII
 A PLANNED UNIT DEVELOPMENT
 A PART OF THE N.E. 1/4, SECTION 14, T9N, R3W I.M.
 NORMAN, CLEVELAND COUNTY, OKLAHOMA



STORM DRAINAGE DETENTION FACILITY EASEMENT

DRAINAGE DETENTION FACILITY EASEMENTS ARE HEREBY ESTABLISHED AS SHOWN TO PROVIDE FOR DETENTION OF STORM SURFACE WATER AND CONSTRUCTED AS APPROVED BY THE CITY ENGINEER. ALL MAINTENANCE WITHIN THE DRAINAGE DETENTION FACILITY EASEMENT SHALL BE THE RIGHT, DUTY AND RESPONSIBILITY OF THE PROPERTY OWNERS ASSOCIATION IN THE PLAT OF UNIVERSITY NORTH PARK, L.L.C. HOWEVER, IF MAINTENANCE IS NEGLECTED OR SUBJECT TO OTHER UNUSUAL CIRCUMSTANCES AND IS DETERMINED TO BE A HAZARD OR THREAT TO PUBLIC SAFETY BY THE CITY (INCLUDING CORRECTIVE MAINTENANCE MAY BE PERFORMED BY THE GOVERNING JURISDICTION WITH COSTS ASSESSED TO AND BORNE UPON SAID PROPERTY OWNER(S)). OFFICIALS REPRESENTING THE PUBLIC WORKS DEPARTMENT, SHALL HAVE THE RIGHT TO ENTER UPON THE EASEMENT FOR PURPOSES OF PERIODIC INSPECTION AND/OR CORRECTIVE MAINTENANCE OF THE FACILITY. UPON RECEIVING WRITTEN APPROVAL FROM THE PUBLIC WORKS DEPARTMENT, PROPERTY OWNER(S) MAY CONSTRUCT IMPROVEMENTS WITHIN THE EASEMENT PROVIDED THE IMPROVEMENT DOES NOT INTERFERE WITH THE FUNCTION OF THE DETENTION FACILITY.

- NOTES:**
1. ALL IMPROVEMENTS WITHIN UTILITY EASEMENTS MAY BE REMOVED BY THE CITY TO PERFORM MAINTENANCE AND REPLACEMENT OF SUCH IMPROVEMENTS IS THE RESPONSIBILITY OF THE PROPERTY OWNER.
 2. EASEMENTS SHOWN HEREON BY SPECIFIC RECORDING INFORMATION ARE SHOWN FOR REFERENCE PURPOSES ONLY AND ARE NOT DEDICATED PURSUANT TO THIS FINAL PLAT.

DATA	
HEALTH/JURISDICTION	OKLAHOMA STATE PLANNING COORDINATE SYSTEM
OKLAHOMA STATE PLANNING COORDINATE SYSTEM	NAD 83 (SOUTH ZONE)
VERTICAL	NAVD 83
SOURCE	CITY OF NORMAN SURVEY CONTROL MONUMENT NO. 334
DESCRIPTION	1.777' MONUMENT DISC
MONUMENT (1000001)	200.00001
LASTING (1000001)	2,322,247.720
ELEVATION	1180.07
CURVATURE	SCALE FACTOR 0.0000434

BENCHMARK - BM 10	
ELEVATION	1178.28
MONUMENT	CUT "X" ON SOUTH CURB OF CORPORATE CENTRE DRIVE APPROX 1,500' WEST OF BM #8

BENCHMARK - BM 11	
ELEVATION	1180.18
MONUMENT	CUT "X" ON EAST SIDE OF EAST BLVD AT THE INTERSECTION OF EAST BLVD WEST OF BM #10

D/E = DRAINAGE EASEMENT
 P/E = PRECINCT EASEMENT
 LNA = LIMITS OF NO ACCESS
 U/E = UTILITY EASEMENT
 W/L = PUBLIC WATER LINE EASEMENT
 B/L = BUILDING LINE
 -1000 = ADDRESS

TOTAL LOTS = 1 COMMERCIAL LOT

THE BASIS OF BEARINGS FOR THIS SURVEY WAS SOUTH 89°00'20" WEST ON THE SOUTH LINE OF THE SOUTHWEST QUARTER OF SECTION 14, TOWNSHIP 9 NORTH, RANGE 3 WEST OF THE MERIDIAN, ALSO BEING THE SOUTH LINE OF BLOCK 1, UNIVERSITY NORTH PARK CORPORATE CENTRE SECTION 1 AS SHOWN ON SAID PLAT.

UNLESS OTHERWISE STATED ALL PROPERTY CORNERS ARE 1/2" IRON PINS WITH CAG391 CAPS OR MAG NAILS WITH CAG391 TAGS.



SCALE 1" = 40'

NOTE: THE UNIT OF MEASUREMENT SHOWN FOR ALL DIMENSIONS ON THE FINAL PLAT IS FEET.

Date: December 24, 2019
 SMC Consulting Engineers, P.C.
 815 W 40th Street
 Oklahoma City, OK 73108
 Ph: (405)252-7715
 Oklahoma License Exp. 8-30-2021
 UNIVERSITY NORTH PARK SECTION XVII
 A PLANNED UNIT DEVELOPMENT
 FINAL PLAT SHEET 2 OF 2