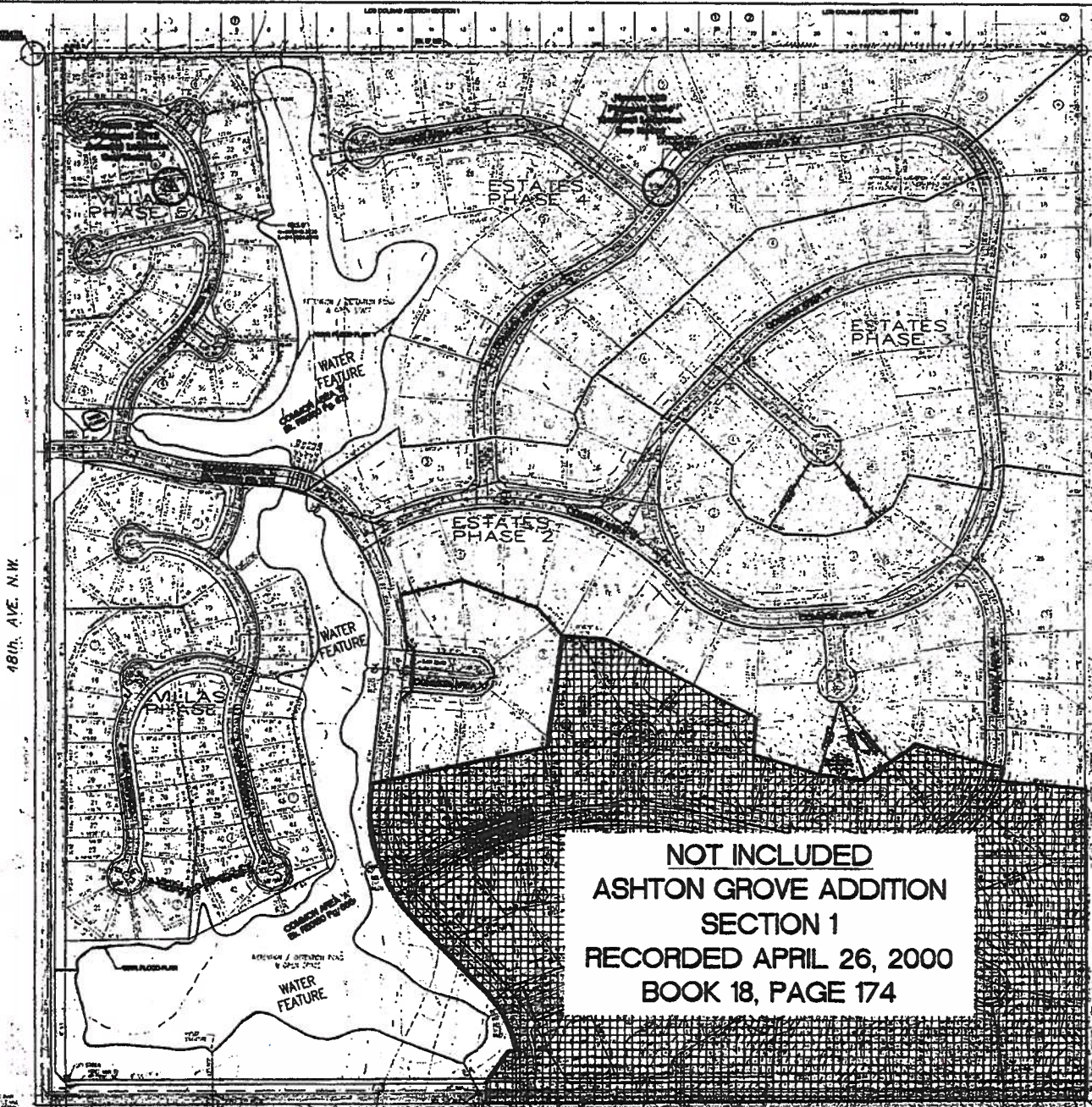
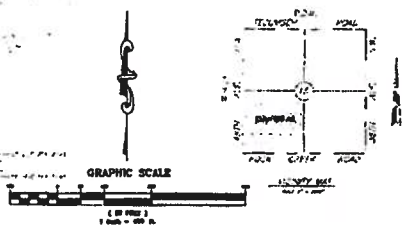


PRELIMINARY PLAT
ASHTON GROVE
 A PLANNED UNIT DEVELOPMENT
 BEING A PART OF THE S.W. 1/4,
 SECTION 15, T9N, R3W, I.M.
 NORMAN, CLEVELAND COUNTY, OKLAHOMA

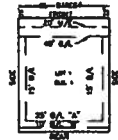
48th. AVE. N.W.



NOT INCLUDED
ASHTON GROVE ADDITION
SECTION 1
RECORDED APRIL 26, 2000
BOOK 18, PAGE 174



GENERAL NOTES:
 1. THIS PLAT IS A PRELIMINARY PLAT AND IS NOT TO BE CONSIDERED A FINAL PLAT.
 2. THE CITY OF NORMAN, OKLAHOMA, HAS REVIEWED THIS PLAT AND HAS APPROVED IT FOR RECORDATION.
 3. THE CITY OF NORMAN, OKLAHOMA, HAS REVIEWED THIS PLAT AND HAS APPROVED IT FOR RECORDATION.
 4. THE CITY OF NORMAN, OKLAHOMA, HAS REVIEWED THIS PLAT AND HAS APPROVED IT FOR RECORDATION.
 5. THE CITY OF NORMAN, OKLAHOMA, HAS REVIEWED THIS PLAT AND HAS APPROVED IT FOR RECORDATION.
 6. THE CITY OF NORMAN, OKLAHOMA, HAS REVIEWED THIS PLAT AND HAS APPROVED IT FOR RECORDATION.
 7. THE CITY OF NORMAN, OKLAHOMA, HAS REVIEWED THIS PLAT AND HAS APPROVED IT FOR RECORDATION.
 8. THE CITY OF NORMAN, OKLAHOMA, HAS REVIEWED THIS PLAT AND HAS APPROVED IT FOR RECORDATION.
 9. THE CITY OF NORMAN, OKLAHOMA, HAS REVIEWED THIS PLAT AND HAS APPROVED IT FOR RECORDATION.
 10. THE CITY OF NORMAN, OKLAHOMA, HAS REVIEWED THIS PLAT AND HAS APPROVED IT FOR RECORDATION.



NOTES:
 1. ALL PUBLIC UTILITIES AND RECORDS SHALL BE IN A UTILITY CATEGORY. THE UTILITIES SHALL BE LOCATED AND DEPICTED IN ACCORDANCE WITH THE FINAL PLANS AND THE CITY OF NORMAN STANDARDS AND SPECIFICATIONS. PROVISIONS SHALL BE MADE TO SHOW THE SIZE, DEPTH AND SPACING.
 2. LOTS 10, 11, 12, 13, 14, 15, 16, 17, 18, 19, 20, 21, 22, 23, 24, 25, 26, 27, 28, 29, 30, 31, 32, 33, 34, 35, 36, 37, 38, 39, 40, 41, 42, 43, 44, 45, 46, 47, 48, 49, 50, 51, 52, 53, 54, 55, 56, 57, 58, 59, 60, 61, 62, 63, 64, 65, 66, 67, 68, 69, 70, 71, 72, 73, 74, 75, 76, 77, 78, 79, 80, 81, 82, 83, 84, 85, 86, 87, 88, 89, 90, 91, 92, 93, 94, 95, 96, 97, 98, 99, 100, 101, 102, 103, 104, 105, 106, 107, 108, 109, 110, 111, 112, 113, 114, 115, 116, 117, 118, 119, 120, 121, 122, 123, 124, 125, 126, 127, 128, 129, 130, 131, 132, 133, 134, 135, 136, 137, 138, 139, 140, 141, 142, 143, 144, 145, 146, 147, 148, 149, 150, 151, 152, 153, 154, 155, 156, 157, 158, 159, 160, 161, 162, 163, 164, 165, 166, 167, 168, 169, 170, 171, 172, 173, 174, 175, 176, 177, 178, 179, 180, 181, 182, 183, 184, 185, 186, 187, 188, 189, 190, 191, 192, 193, 194, 195, 196, 197, 198, 199, 200, 201, 202, 203, 204, 205, 206, 207, 208, 209, 210, 211, 212, 213, 214, 215, 216, 217, 218, 219, 220, 221, 222, 223, 224, 225, 226, 227, 228, 229, 230, 231, 232, 233, 234, 235, 236, 237, 238, 239, 240, 241, 242, 243, 244, 245, 246, 247, 248, 249, 250, 251, 252, 253, 254, 255, 256, 257, 258, 259, 260, 261, 262, 263, 264, 265, 266, 267, 268, 269, 270, 271, 272, 273, 274, 275, 276, 277, 278, 279, 280, 281, 282, 283, 284, 285, 286, 287, 288, 289, 290, 291, 292, 293, 294, 295, 296, 297, 298, 299, 300, 301, 302, 303, 304, 305, 306, 307, 308, 309, 310, 311, 312, 313, 314, 315, 316, 317, 318, 319, 320, 321, 322, 323, 324, 325, 326, 327, 328, 329, 330, 331, 332, 333, 334, 335, 336, 337, 338, 339, 340, 341, 342, 343, 344, 345, 346, 347, 348, 349, 350, 351, 352, 353, 354, 355, 356, 357, 358, 359, 360, 361, 362, 363, 364, 365, 366, 367, 368, 369, 370, 371, 372, 373, 374, 375, 376, 377, 378, 379, 380, 381, 382, 383, 384, 385, 386, 387, 388, 389, 390, 391, 392, 393, 394, 395, 396, 397, 398, 399, 400, 401, 402, 403, 404, 405, 406, 407, 408, 409, 410, 411, 412, 413, 414, 415, 416, 417, 418, 419, 420, 421, 422, 423, 424, 425, 426, 427, 428, 429, 430, 431, 432, 433, 434, 435, 436, 437, 438, 439, 440, 441, 442, 443, 444, 445, 446, 447, 448, 449, 450, 451, 452, 453, 454, 455, 456, 457, 458, 459, 460, 461, 462, 463, 464, 465, 466, 467, 468, 469, 470, 471, 472, 473, 474, 475, 476, 477, 478, 479, 480, 481, 482, 483, 484, 485, 486, 487, 488, 489, 490, 491, 492, 493, 494, 495, 496, 497, 498, 499, 500, 501, 502, 503, 504, 505, 506, 507, 508, 509, 510, 511, 512, 513, 514, 515, 516, 517, 518, 519, 520, 521, 522, 523, 524, 525, 526, 527, 528, 529, 530, 531, 532, 533, 534, 535, 536, 537, 538, 539, 540, 541, 542, 543, 544, 545, 546, 547, 548, 549, 550, 551, 552, 553, 554, 555, 556, 557, 558, 559, 560, 561, 562, 563, 564, 565, 566, 567, 568, 569, 570, 571, 572, 573, 574, 575, 576, 577, 578, 579, 580, 581, 582, 583, 584, 585, 586, 587, 588, 589, 590, 591, 592, 593, 594, 595, 596, 597, 598, 599, 600, 601, 602, 603, 604, 605, 606, 607, 608, 609, 610, 611, 612, 613, 614, 615, 616, 617, 618, 619, 620, 621, 622, 623, 624, 625, 626, 627, 628, 629, 630, 631, 632, 633, 634, 635, 636, 637, 638, 639, 640, 641, 642, 643, 644, 645, 646, 647, 648, 649, 650, 651, 652, 653, 654, 655, 656, 657, 658, 659, 660, 661, 662, 663, 664, 665, 666, 667, 668, 669, 670, 671, 672, 673, 674, 675, 676, 677, 678, 679, 680, 681, 682, 683, 684, 685, 686, 687, 688, 689, 690, 691, 692, 693, 694, 695, 696, 697, 698, 699, 700, 701, 702, 703, 704, 705, 706, 707, 708, 709, 710, 711, 712, 713, 714, 715, 716, 717, 718, 719, 720, 721, 722, 723, 724, 725, 726, 727, 728, 729, 730, 731, 732, 733, 734, 735, 736, 737, 738, 739, 740, 741, 742, 743, 744, 745, 746, 747, 748, 749, 750, 751, 752, 753, 754, 755, 756, 757, 758, 759, 760, 761, 762, 763, 764, 765, 766, 767, 768, 769, 770, 771, 772, 773, 774, 775, 776, 777, 778, 779, 780, 781, 782, 783, 784, 785, 786, 787, 788, 789, 790, 791, 792, 793, 794, 795, 796, 797, 798, 799, 800, 801, 802, 803, 804, 805, 806, 807, 808, 809, 810, 811, 812, 813, 814, 815, 816, 817, 818, 819, 820, 821, 822, 823, 824, 825, 826, 827, 828, 829, 830, 831, 832, 833, 834, 835, 836, 837, 838, 839, 840, 841, 842, 843, 844, 845, 846, 847, 848, 849, 850, 851, 852, 853, 854, 855, 856, 857, 858, 859, 860, 861, 862, 863, 864, 865, 866, 867, 868, 869, 870, 871, 872, 873, 874, 875, 876, 877, 878, 879, 880, 881, 882, 883, 884, 885, 886, 887, 888, 889, 890, 891, 892, 893, 894, 895, 896, 897, 898, 899, 900, 901, 902, 903, 904, 905, 906, 907, 908, 909, 910, 911, 912, 913, 914, 915, 916, 917, 918, 919, 920, 921, 922, 923, 924, 925, 926, 927, 928, 929, 930, 931, 932, 933, 934, 935, 936, 937, 938, 939, 940, 941, 942, 943, 944, 945, 946, 947, 948, 949, 950, 951, 952, 953, 954, 955, 956, 957, 958, 959, 960, 961, 962, 963, 964, 965, 966, 967, 968, 969, 970, 971, 972, 973, 974, 975, 976, 977, 978, 979, 980, 981, 982, 983, 984, 985, 986, 987, 988, 989, 990, 991, 992, 993, 994, 995, 996, 997, 998, 999, 1000.

OWNER / DEVELOPER
 ASHTON GROVE I.C.
 105 S. JONES
 NORMAN, OKLAHOMA 73069
 405-447-3555 (O)
 405-447-3885 (F)
 281-460-5616 (M)

DESIGNED BY :
 SPEAR & McCALEB CO., INC.
 815 W. MAIN ST.
 OKLAHOMA CITY, OK. 73106
 (405) 232-7715

APPROVED BY PLANNING COMMISSION
 JANUARY 13, 1998

MODIFIED BY :
 RED PLAINS PROFESSIONAL, INC.
 2933 S. BRYANT AVE.
 EDMOND, OKLAHOMA 73013
 405-341-4031



PRELIMINARY PLAT	
ASHTON GROVE (P.U.D.)	
NORMAN, OKLAHOMA	
RED PLAINS PROFESSIONAL, INC.	
DATE: 01-13-98	SCALE: 1" = 100'
BY: [Signature]	1