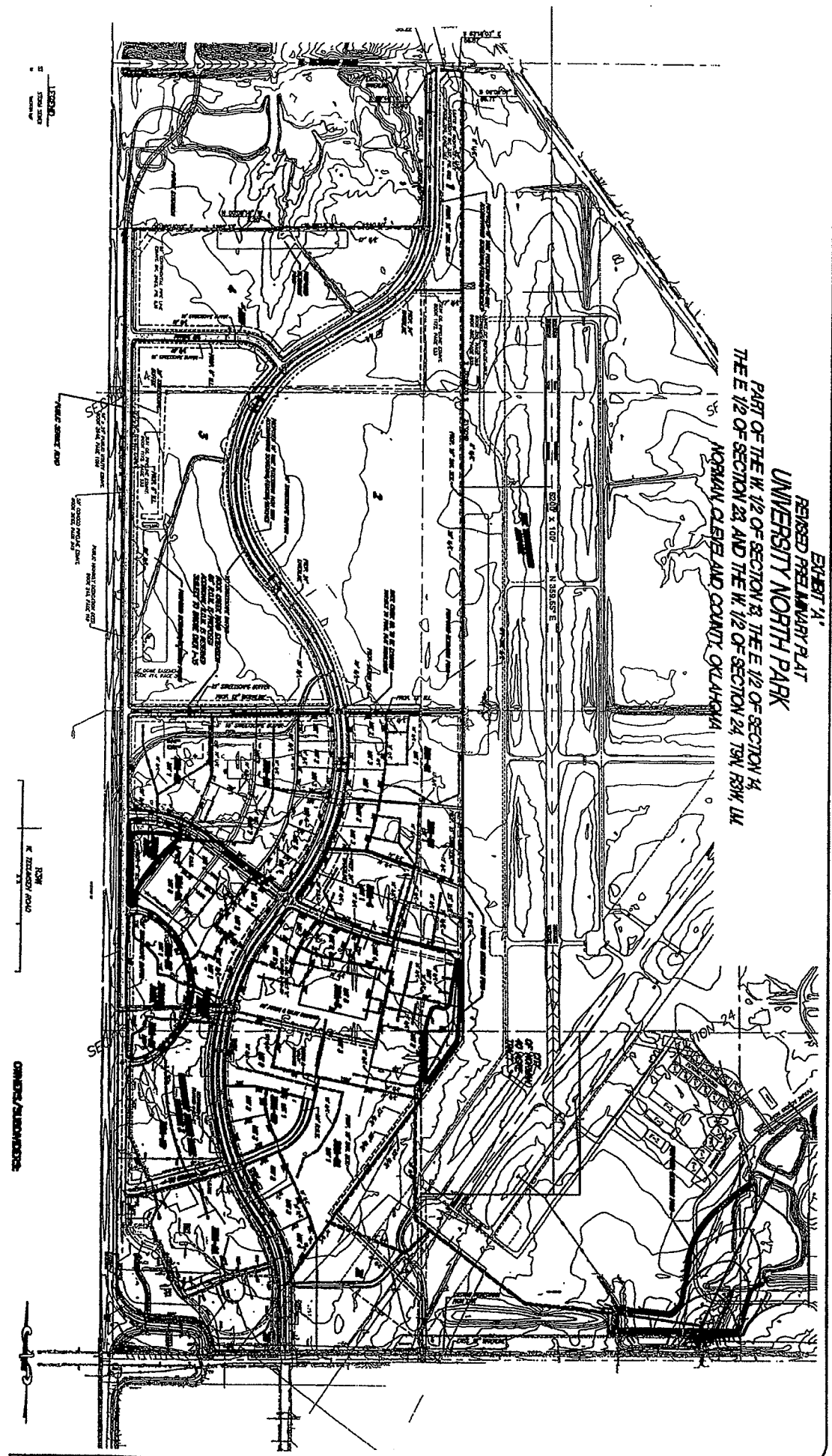


SHEET 11
 REISED REELINARY PLAT
 UNIVERSITY NORTH PARK
 PART OF THE W. 1/2 OF SECTION 13, THE E. 1/2 OF SECTION 14,
 THE E. 1/2 OF SECTION 23 AND THE W. 1/2 OF SECTION 24, T9N, R3W, L1E
 NORMAN, CLEVELAND COUNTY, OKLAHOMA



1:2500
 1" = 200'

100'
 R. JOHNSON ROAD

OWNERS' DIMENSIONS