

**FINAL PLAT
FOUNTAIN VIEW IV**

A PLANNED UNIT DEVELOPMENT
A PART OF THE W. 1/2 OF THE N.W. 1/4, SECTION 15, T9N, R3W, I.M.
NORMAN, CLEVELAND COUNTY, OKLAHOMA

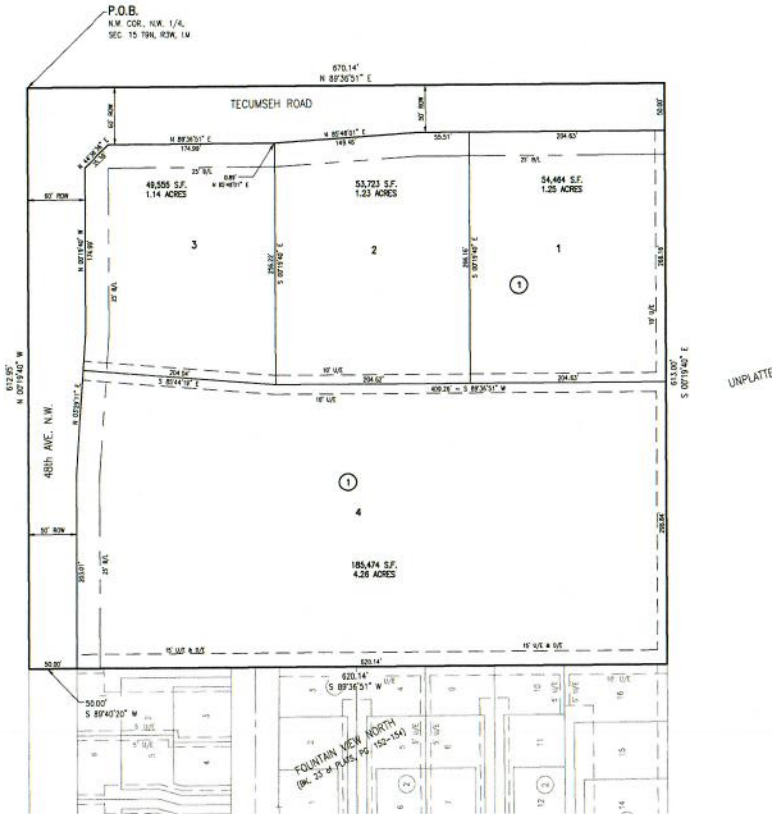
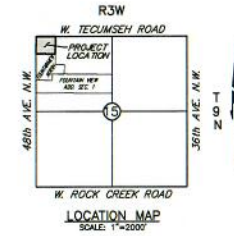
LEGAL DESCRIPTION:

A tract of land lying in the Northwest Quarter (NW/4) of Section 15, Township 9 North, Range 3 West of the Indian Meridian, Cleveland County, Oklahoma being more particularly described as follows:

BEGINNING at the Northwest corner of the NW/4 of said Section 15;

THENCE North 89°35'51" East along the North line of said NW/4 a distance of 670.14 feet; THENCE South 00°19'40" East a distance of 613.00 feet to the Northeast corner of the filed final plat of FOUNTAIN VIEW NORTH (as filed in Book 23 of Plats, Page 152-154); THENCE South 89°35'51" West along the North line of said final plat a distance of 620.14 feet; THENCE South 89°40'20" West along the North line of said final plat a distance of 50.00 feet to a point on the West line of said NW/4; THENCE North 00°19'40" West along said West line a distance of 612.95 feet to the POINT OF BEGINNING.

Said tract contains 410,794 square feet or 9.431 acres, more or less.



SCALE: 1" = 60'
BASIS OF BEARING FOR THIS PLAT
WAS N 00°19'40" W AS SHOWN ON
THE WEST LINE OF SECTION 15

TOTAL LOTS = 4

BENCHMARK #1: SET BRASS CAP
AT
ELEV. =

LEGEND

R.O.M. = RIGHT OF WAY
U/E = UTILITY EASEMENT
D/E = DRAINAGE EASEMENT
B/L = BUILDING SETBACK LINE
P.O.B. = POINT OF BEGINNING
-0000- = ADDRESS

Date: September 21, 2016

SMC Consulting Engineers, P.C.
815 W. Main Street
Oklahoma City, OK 73108
Ph: (405) 232-7715
Oklahoma State Bar No. 6-30-2017

FOUNTAIN VIEW IV
A PLANNED UNIT DEVELOPMENT
FINAL PLAT
SHEET 2 OF 2

NOTE: THE UNIT OF MEASUREMENT SHOWN FOR ALL DIMENSIONS ON THE FINAL PLAT IS U.S. SURVEY FEET.