

PRELIMINARY SITE DEVELOPMENT PLAN
COBBLESTONE CREEK
 A PART OF THE S.W. 1/4, SECTION 16, T8N, R2W I.M.
 NORMAN, CLEVELAND COUNTY, OKLAHOMA

OWNER/DEVELOPER:
 1224 N.E. 100th St.
 Norman, OK 73072
 Phone: (405) 251-1550

DESIGNER:
 SMC Consulting Engineers, P.C.
 2000 N.W. 10th St., Suite 200
 Norman, OK 73071
 Phone: (405) 251-7715

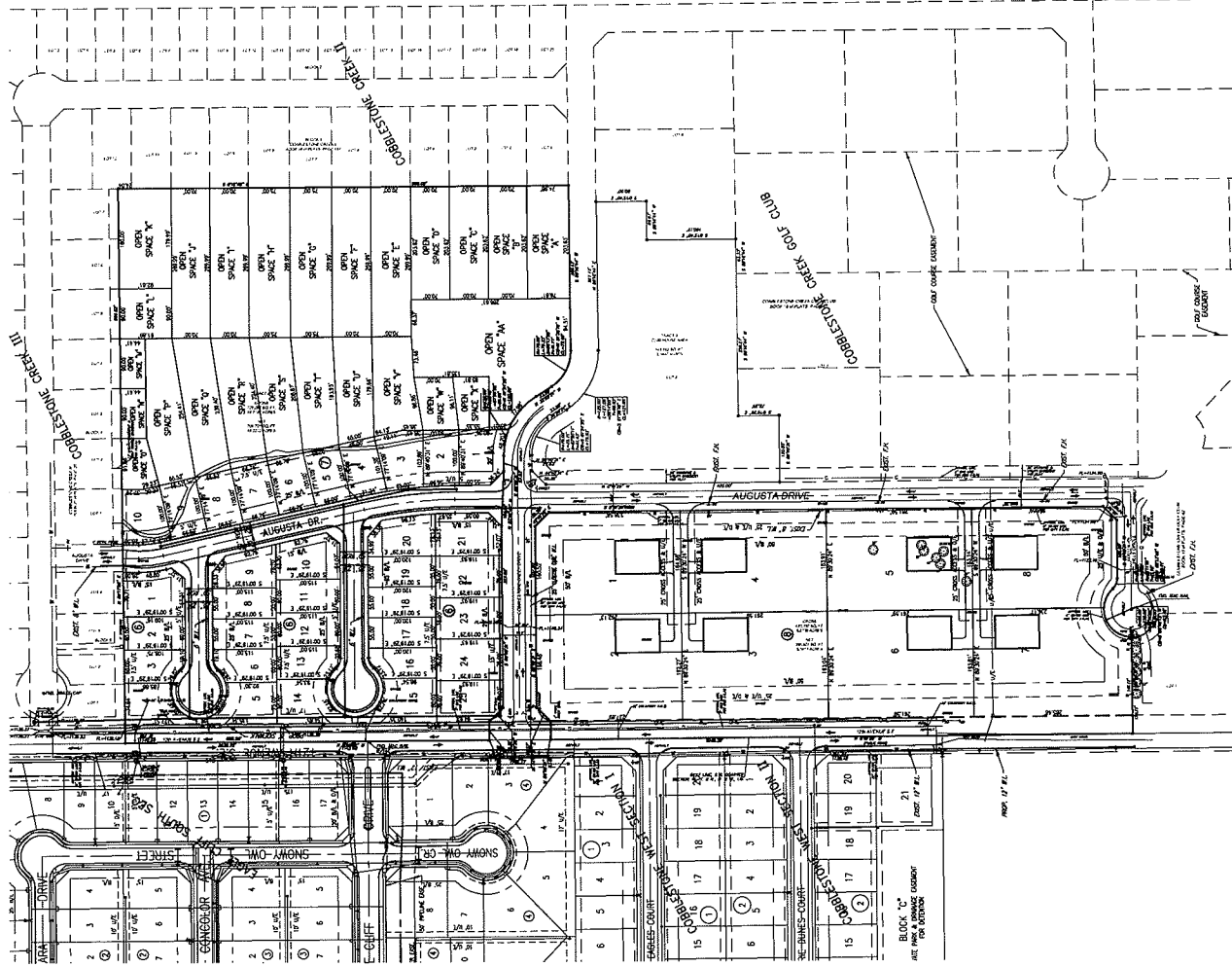
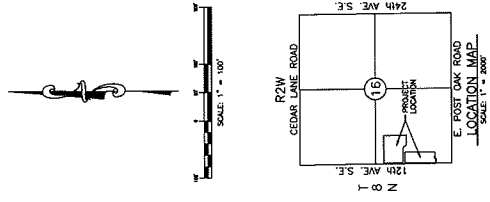
COBBLESTONE CREEK
 12th AVE. S.E. & CEDAR LANE ROAD
 NORMAN, OKLAHOMA

SMC
 SMC Consulting Engineers, P.C.
 2000 N.W. 10th St., Suite 200
 Norman, Oklahoma 73071
 Phone: (405) 251-7715
 Fax: (405) 251-7716
 Website: www.smce.com

PROJECT NO. 2007-001
 SHEET NO. 1 OF 1

PRELIMINARY SITE DEVELOPMENT PLAN

NOTE:
 1. OPEN SPACE LOT "M" IS A PART OF THE PUD.



INDIAN SPRINGS ESTATES

BLOCK "M" IS THE PART OF THE PUD