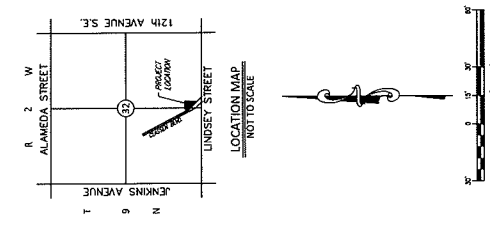
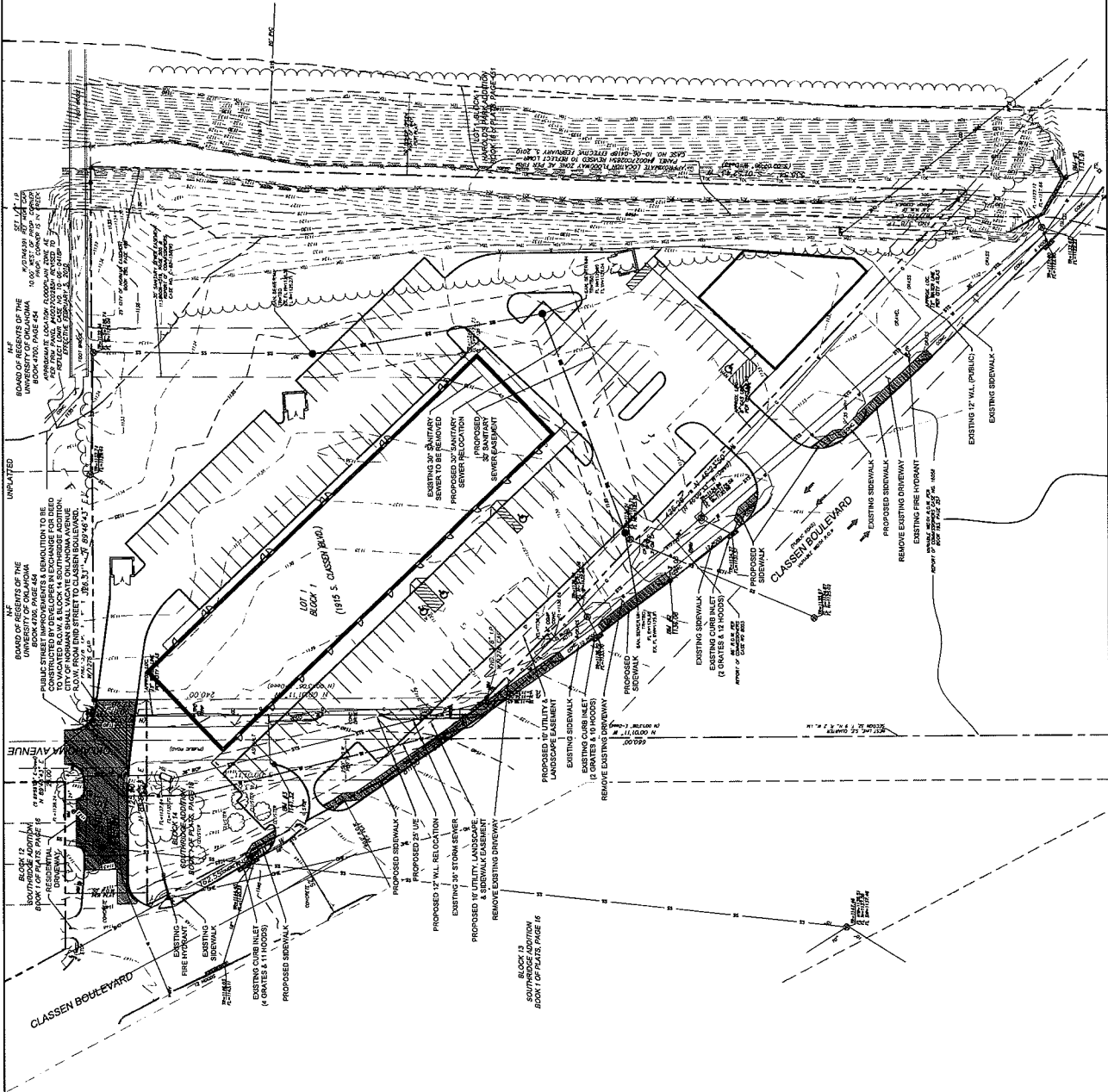


PRELIMINARY SITE DEVELOPMENT PLAN
CLASSEN LANDING
 A PART OF THE S. 1/2 OF SECTION 32, T9N, R2W, 1.M.
 NORMAN, CLEVELAND COUNTY, OKLAHOMA



OK DRAWING BOARD, P.C. ALL RIGHTS RESERVED. THIS DRAWING MAY BE REPRODUCED OR TRANSMITTED IN ANY FORM OR BY ANY MEANS, ELECTRONIC OR MECHANICAL, INCLUDING PHOTOCOPYING, RECORDING, OR BY ANY INFORMATION STORAGE AND RETRIEVAL SYSTEM.

OWNER/DEVELOPER
 2214 48th AVENUE NW
 OKLAHOMA CITY, OK 73109
 (405) 754-4303

ENGINEER
 SMC CONSULTING ENGINEERS
 1000 NORTH UNIVERSITY AVENUE
 OKLAHOMA CITY, OK 73106
 (405) 232-7115

PROJECT LOCATION

CLASSEN LANDING 1915 S. CLASSEN BLVD. NORMAN, OKLAHOMA	SMC Consulting Engineers, P.C. 1000 NORTH UNIVERSITY AVENUE OKLAHOMA CITY, OK 73106 (405) 232-7115		
	PROJECT NO. 221350 DATE: 11/21/23 SCALE: AS SHOWN DRAWN BY: JLM CHECKED BY: JLM IN CHARGE: JLM		
PRELIMINARY SITE DEVELOPMENT PLAN			
SHEET NO. 1			

PROJECT LOCATION FROM PREVIOUS PLANS