

AFTER RECORDING RETURN TO:
OGE ELECTRIC SERVICES
RIGHT-OF-WAY AGENT,-M/C WNM-12
PO BOX 321
OKLAHOMA CITY OK 73101-0321

EASEMENT

Work Order #7353066

KNOW ALL MEN BY THESE PRESENTS: THAT **THE CITY OF NORMAN, an Oklahoma municipal corporation**, Grantor, in consideration of Ten or more dollars in hand paid, the receipt of which is hereby acknowledged, and other good and valuable consideration, does hereby grant and warrant unto **OKLAHOMA GAS AND ELECTRIC COMPANY**, an Oklahoma corporation, Grantee, its successors and assigns, the right, privilege and authority to enter upon and install, erect, operate, maintain, and reconstruct underground and/or above ground a system of conduits, wires, cables, vaults, junction boxes, switches, fuses, transformers, service connection boxes and other fixtures for the transmission and distribution of electrical current and communication messages, including the right of ingress and egress to and from said system across adjoining lands of Grantor, upon and across the following real property and premises, situated in Cleveland County, State of Oklahoma, to wit:

A part of the **SE/4, Section 33, T9N, R2W, I.M.**, being a part of a tract described in a deed recorded in Book 2339, Pages 816-817 at the County Clerk, as described in Exhibit "A" and shown on Exhibit "B", attached hereto and hereby made a part of this easement.

Grantor further covenants and agrees that no building or other structure shall ever be erected nor shall any excavation or other removal of soil, so as to change the grade of terrain, be accomplished by Grantor, its heirs or assigns, within the above described easement area unless the written consent of the Grantee is first obtained. Grantor further acknowledges the requirements of 63 Oklahoma Statutes (1991) Section 142.1, et. seq. (One-call statute).

The rights and privileges above granted to continue so long as same are used or needed for the transmission and distribution of electric current or communication messages; but should the Grantee remove its property from the premises and abandon the right of way herein granted, then the rights granted in this easement shall terminate.

Approved this _____ day of _____, 2014, by the City of Norman.

ATTEST: _____
Brenda Hall, City Clerk

By: _____
Cindy Rosenthal, Mayor

Approved as to form this _____ day of _____, 2014.

City Seal

By: _____
Jeff Bryant, City Attorney

CITY ACKNOWLEDGMENT

STATE OF OKLAHOMA, COUNTY OF CLEVELAND, SS;

Before me, the undersigned, a Notary Public, in and for said County and State, on this _____ day of _____, 2014, personally appeared Cindy Rosenthal, to me known to be the identical person who subscribed the name of the maker thereof to the foregoing instrument as its Mayor, and acknowledged to me that she executed the same as her free and voluntary act and deed of such city, for the uses and purposes therein set forth.

My Commission Expires: _____
Commission # _____

Notary Public

EXHIBIT "A"

To that certain easement from The City of Norman, an Oklahoma municipal corporation to Oklahoma Gas and Electric Company, on the _____ day of _____, 2014.

An Easement in the **SOUTHEAST QUARTER (SE1/4) OF SECTION THIRTY-THREE (33), TOWNSHIP NINE (9) NORTH, RANGE TWO (2) WEST** of the Indian Meridian, Cleveland County, Oklahoma, written by Timothy G. Pollard, PLS 1474, on September 17, 2014, using a Deed Bearing of S89°58'14"W between existing monuments at the Southeast and Southwest corners of said SE1/4, as a Basis of Bearing and as shown on attached Easement Sketch, said easement further described as being Ten (10) feet in width, Five (5) feet each side of a centerline described as:

COMMENCING at the Southeast corner of said SE1/4;

Thence S89°58'14"W, on the South line of said SE1/4, for a distance of 1305.00 feet;

Thence N00°01'46"W for a distance of 50.00 feet to the **POINT OF BEGINNING**;

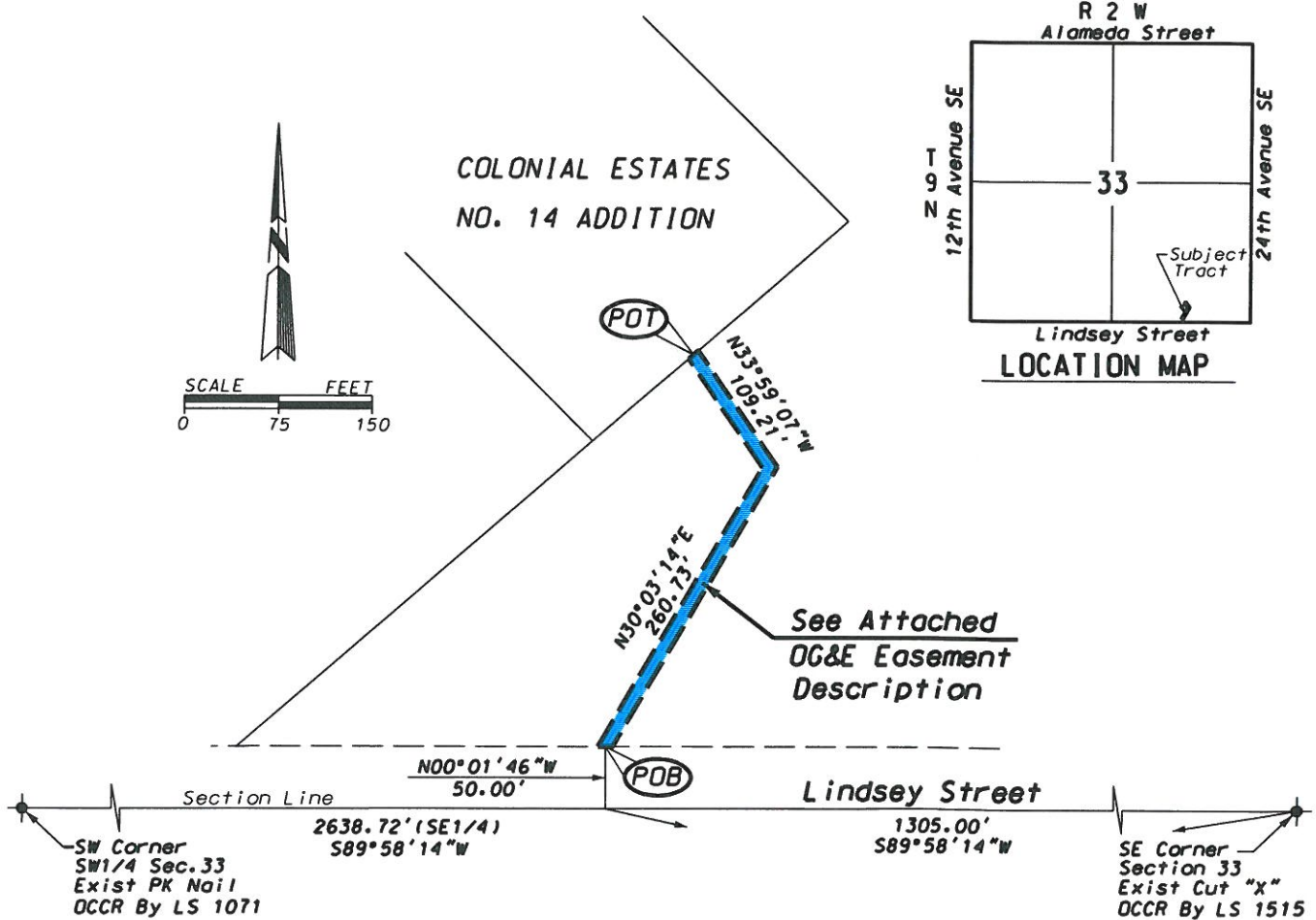
Thence N30°03'14"E, on said centerline, for a distance of 260.73 feet;

Thence N33°59'07"W, on said centerline, for a distance of 109.21 feet to the **POINT OF TERMINATION**,

said point being on the East line of Lot 3 Block 1 of Colonial Estates No.14 Addition to the City of Norman, Cleveland County, Oklahoma.

EXHIBIT "B"

EASEMENT SKETCH



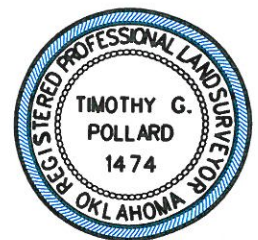
Note: Bearings Are Based On S89°58'14"W Between Existing Monuments at the Southeast and the Southwest Corners of the SE1/4 of Section 33, T9N, R2W.

(●) - Indicates Existing Monument as Noted.

(DCCR) - Indicates Oklahoma Certified Corner Record On File With The Oklahoma Dept. of Libraries, Archives Division.

I, Timothy G. Pollard, a Professional Land Surveyor, hereby certify that the attached drawing is a true and accurate representation of the attached easement description and is subject to all notes and qualifying statements.

Timothy G. Pollard
Timothy G. Pollard, PLS 1474
Dated: September 17, 2014



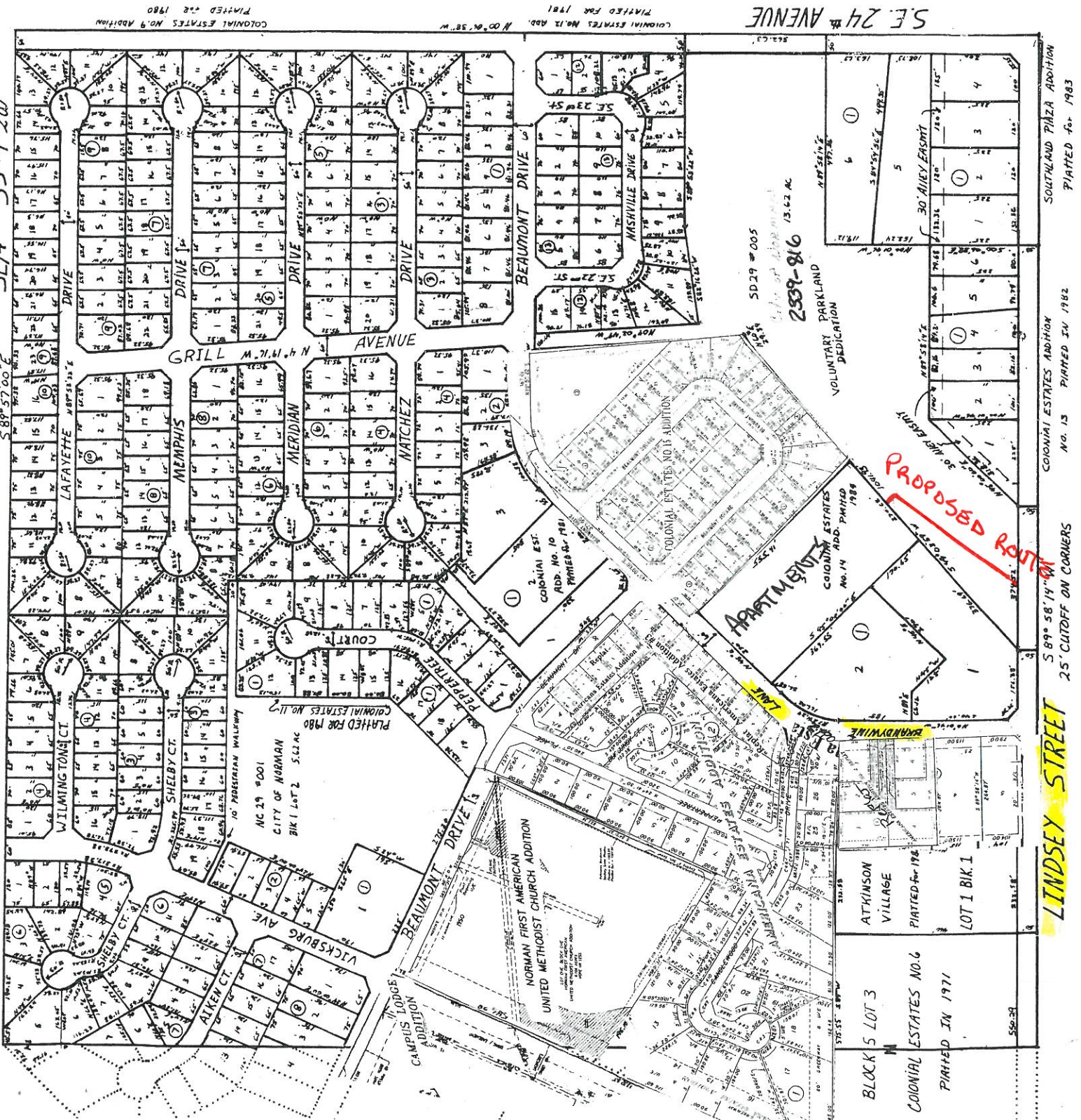
OKLAHOMA GAS AND ELECTRIC COMPANY

POLLARD & WHITED SURVEYING INC. 2514 TEE DRIVE, NORMAN, OKLAHOMA 73069 CA#2385 EXP 06-30-13 405-366-0001	OG&E EASEMENT SKETCH WO# 7353066 PART OF SE1/4 OF SECTION 33, T9N, R2W, I.M. CLEVELAND COUNTY, OKLAHOMA	REVISIONS:
DRAWN BY: T. POLLARD DATE: Sept. 17, 2014	FILE #: Col Est.ASC DATE: Sept. 15, 2014	SCALE: 1" = 150'
APPROVED BY: D. MEES DATE: Sept. 17, 2013	DRWG #: Col Est.DGN DATE: Sept. 17, 2014	SHEET 1 OF 1

SE/4 33-9-2W

S 89° 57' 00" E

COLONIAL ESTATES ADD. NO. 8 PLATTED IN 1972



SOUTHLAND PLAZA ADDITION
PLATTED FOR 1983

COLONIAL ESTATES ADDITION
NO. 13 PLATTED IN 1982

S 89° 58' 14" W
25' CUTOFF ON CORNERS

LINDSEY STREET

BLOCK 5 LOT 3

COLONIAL ESTATES NO. 6
PLATTED IN 1971

LOT 1 BIK. 1

ATKINSON
VILLAGE

PLATTED FOR 1982

SD 29 #005
239-816

VOLUNTARY PARKLAND
DEDICATION

APARTMENT

COLONIAL ESTATES
NO. 14 ADD. PLATTED
1984

PROPOSED ROUTE

BRANDYMAINE

LOT

ADDITION

PLATTED FOR 1981

PLATTED FOR 1980

PLATTED FOR 1982

PLATTED FOR 1983

PLATTED FOR 1984

PLATTED FOR 1985

PLATTED FOR 1986

PLATTED FOR 1987

PLATTED FOR 1988

PLATTED FOR 1989

PLATTED FOR 1990

PLATTED FOR 1991

PLATTED FOR 1992

PLATTED FOR 1993

PLATTED FOR 1994

PLATTED FOR 1995

PLATTED FOR 1996

PLATTED FOR 1997

PLATTED FOR 1998

PLATTED FOR 1999

PLATTED FOR 2000

PLATTED FOR 2001

PLATTED FOR 2002

PLATTED FOR 2003

PLATTED FOR 2004

PLATTED FOR 2005

PLATTED FOR 2006

PLATTED FOR 2007

PLATTED FOR 2008

PLATTED FOR 2009

PLATTED FOR 2010

PLATTED FOR 2011

PLATTED FOR 2012

PLATTED FOR 2013

PLATTED FOR 2014

PLATTED FOR 2015

PLATTED FOR 2016

PLATTED FOR 2017

PLATTED FOR 2018

PLATTED FOR 2019

PLATTED FOR 2020

PLATTED FOR 2021

PLATTED FOR 2022

PLATTED FOR 2023

PLATTED FOR 2024

PLATTED FOR 2025

PLATTED FOR 2026

PLATTED FOR 2027

PLATTED FOR 2028

PLATTED FOR 2029

PLATTED FOR 2030

PLATTED FOR 2031

PLATTED FOR 2032

PLATTED FOR 2033

PLATTED FOR 2034

PLATTED FOR 2035

PLATTED FOR 2036

PLATTED FOR 2037

PLATTED FOR 2038

PLATTED FOR 2039

PLATTED FOR 2040

PLATTED FOR 2041

PLATTED FOR 2042

PLATTED FOR 2043

PLATTED FOR 2044

PLATTED FOR 2045

PLATTED FOR 2046

PLATTED FOR 2047

PLATTED FOR 2048

PLATTED FOR 2049

PLATTED FOR 2050

PLATTED FOR 2051

PLATTED FOR 2052

PLATTED FOR 2053

PLATTED FOR 2054

PLATTED FOR 2055

PLATTED FOR 2056

PLATTED FOR 2057

PLATTED FOR 2058

PLATTED FOR 2059

PLATTED FOR 2060

PLATTED FOR 2061

PLATTED FOR 2062

PLATTED FOR 2063

PLATTED FOR 2064

PLATTED FOR 2065

PLATTED FOR 2066

PLATTED FOR 2067

PLATTED FOR 2068

PLATTED FOR 2069

PLATTED FOR 2070

PLATTED FOR 2071

PLATTED FOR 2072

PLATTED FOR 2073

PLATTED FOR 2074

PLATTED FOR 2075

PLATTED FOR 2076

PLATTED FOR 2077

PLATTED FOR 2078

PLATTED FOR 2079

PLATTED FOR 2080

PLATTED FOR 2081

PLATTED FOR 2082

PLATTED FOR 2083

PLATTED FOR 2084

PLATTED FOR 2085

PLATTED FOR 2086

PLATTED FOR 2087

PLATTED FOR 2088

PLATTED FOR 2089

PLATTED FOR 2090

PLATTED FOR 2091

PLATTED FOR 2092

PLATTED FOR 2093

PLATTED FOR 2094

PLATTED FOR 2095

PLATTED FOR 2096

PLATTED FOR 2097

PLATTED FOR 2098

PLATTED FOR 2099

PLATTED FOR 2100

PLATTED FOR 2101

PLATTED FOR 2102

PLATTED FOR 2103

PLATTED FOR 2104

PLATTED FOR 2105

PLATTED FOR 2106

PLATTED FOR 2107

PLATTED FOR 2108

PLATTED FOR 2109

PLATTED FOR 2110

PLATTED FOR 2111

PLATTED FOR 2112

PLATTED FOR 2113

PLATTED FOR 2114

PLATTED FOR 2115

PLATTED FOR 2116

PLATTED FOR 2117

PLATTED FOR 2118

PLATTED FOR 2119

PLATTED FOR 2120

PLATTED FOR 2121

PLATTED FOR 2122

PLATTED FOR 2123

PLATTED FOR 2124

PLATTED FOR 2125

PLATTED FOR 2126

PLATTED FOR 2127

PLATTED FOR 2128

PLATTED FOR 2129

PLATTED FOR 2130

PLATTED FOR 2131

PLATTED FOR 2132

PLATTED FOR 2133

PLATTED FOR 2134

PLATTED FOR 2135

PLATTED FOR 2136

PLATTED FOR 2137

PLATTED FOR 2138

PLATTED FOR 2139

PLATTED FOR 2140

PLATTED FOR 2141

PLATTED FOR 2142

PLATTED FOR 2143

PLATTED FOR 2144

PLATTED FOR 2145

PLATTED FOR 2146

PLATTED FOR 2147

PLATTED FOR 2148

PLATTED FOR 2149

PLATTED FOR 2150

PLATTED FOR 2151

PLATTED FOR 2152

PLATTED FOR 2153

PLATTED FOR 2154

PLATTED FOR 2155

PLATTED FOR 2156

PLATTED FOR 2157

PLATTED FOR 2158

PLATTED FOR 2159

PLATTED FOR 2160

PLATTED FOR 2161

PLATTED FOR 2162

PLATTED FOR 2163

PLATTED FOR 2164

PLATTED FOR 2165

PLATTED FOR 2166

PLATTED FOR 2167

PLATTED FOR 2168

PLATTED FOR 2169

PLATTED FOR 2170

PLATTED FOR 2171

PLATTED FOR 2172

PLATTED FOR 2173

PLATTED FOR 2174

PLATTED FOR 2175

PLATTED FOR 2176

PLATTED FOR 2177

PLATTED FOR 2178

PLATTED FOR 2179

PLATTED FOR 2180

PLATTED FOR 2181

PLATTED FOR 2182

PLATTED FOR 2183

PLATTED FOR 2184

PLATTED FOR 2185

PLATTED FOR 2186

PLATTED FOR 2187

PLATTED FOR 2188

PLATTED FOR 2189

PLATTED FOR 2190

PLATTED FOR 2191

PLATTED FOR 2192

PLATTED FOR 2193

PLATTED FOR 2194

PLATTED FOR 2195

PLATTED FOR 2196

PLATTED FOR 2197

PLATTED FOR 2198

PLATTED FOR 2199

PLATTED FOR 2200

PLATTED FOR 2201

PLATTED FOR 2202

PLATTED FOR 2203

PLATTED FOR 2204

PLATTED FOR 2205

PLATTED FOR 2206

PLATTED FOR 2207

PLATTED FOR 2208

PLATTED FOR 2209

PLATTED FOR 2210

PLATTED FOR 2211

PLATTED FOR 2212

PLATTED FOR 2213

PLATTED FOR 2214

PLATTED FOR 2215

PLATTED FOR 2216

PLATTED FOR 2217

PLATTED FOR 2218

PLATTED FOR 2219

PLATTED FOR 2220

PLATTED FOR 2221

PLATTED FOR 2222

PLATTED FOR 2223

PLATTED FOR 2224

PLATTED FOR 2225

PLATTED FOR 2226

PLATTED FOR 2227

PLATTED FOR 2228

PLATTED FOR 2229

PLATTED FOR 2230

PLATTED FOR 2231

PLATTED FOR 2232

PLATTED FOR 2233

PLATTED FOR 2234

PLATTED FOR 2235

PLATTED FOR 2236

PLATTED FOR 2237

PLATTED FOR 2238

PLATTED FOR 2239

PLATTED FOR 2240

PLATTED FOR 2241

PLATTED FOR 2242

PLATTED FOR 2243

PLATTED FOR 2244

PLATTED FOR 2245

PLATTED FOR 2246