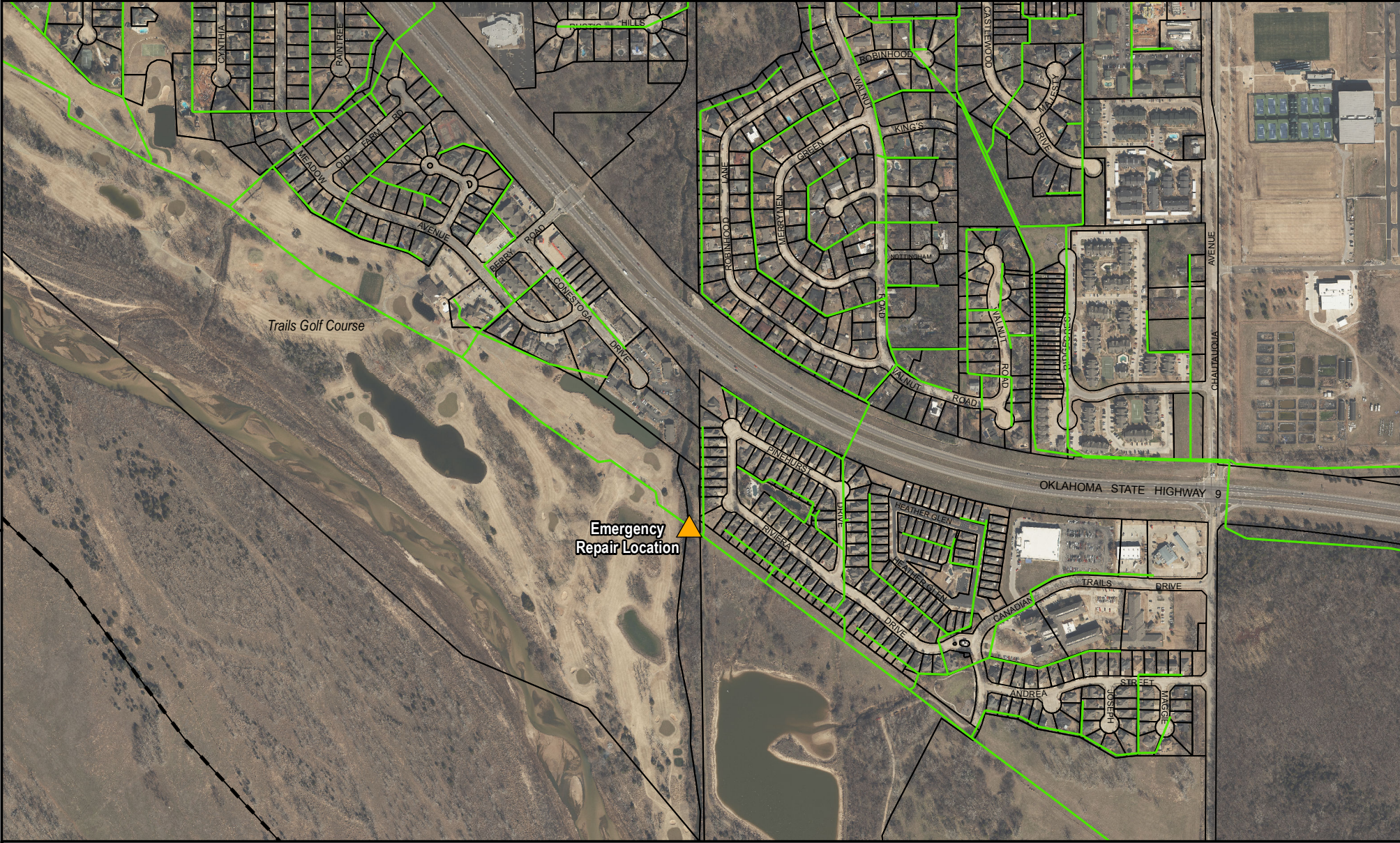



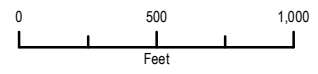
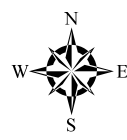
\\COM\SL\City\departments\GIS\Matthews\Map\140\msh\Emergency\Repair_ImhoffCreekCrossing\EmergencyRepair_ImhoffCreekCrossing_8x11_10072016.mxd



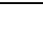



Emergency Repairs to 42-Inch Sewer Crossing at Imhoff Creek

October 7, 2016

 Map produced by the City of Norman GIS Services Division.
The City of Norman assumes no responsibility for errors or omissions in the information presented.



-  Emergency Repair Location
-  Sanitary Sewer Network
-  Parcel Boundary
-  City Boundary