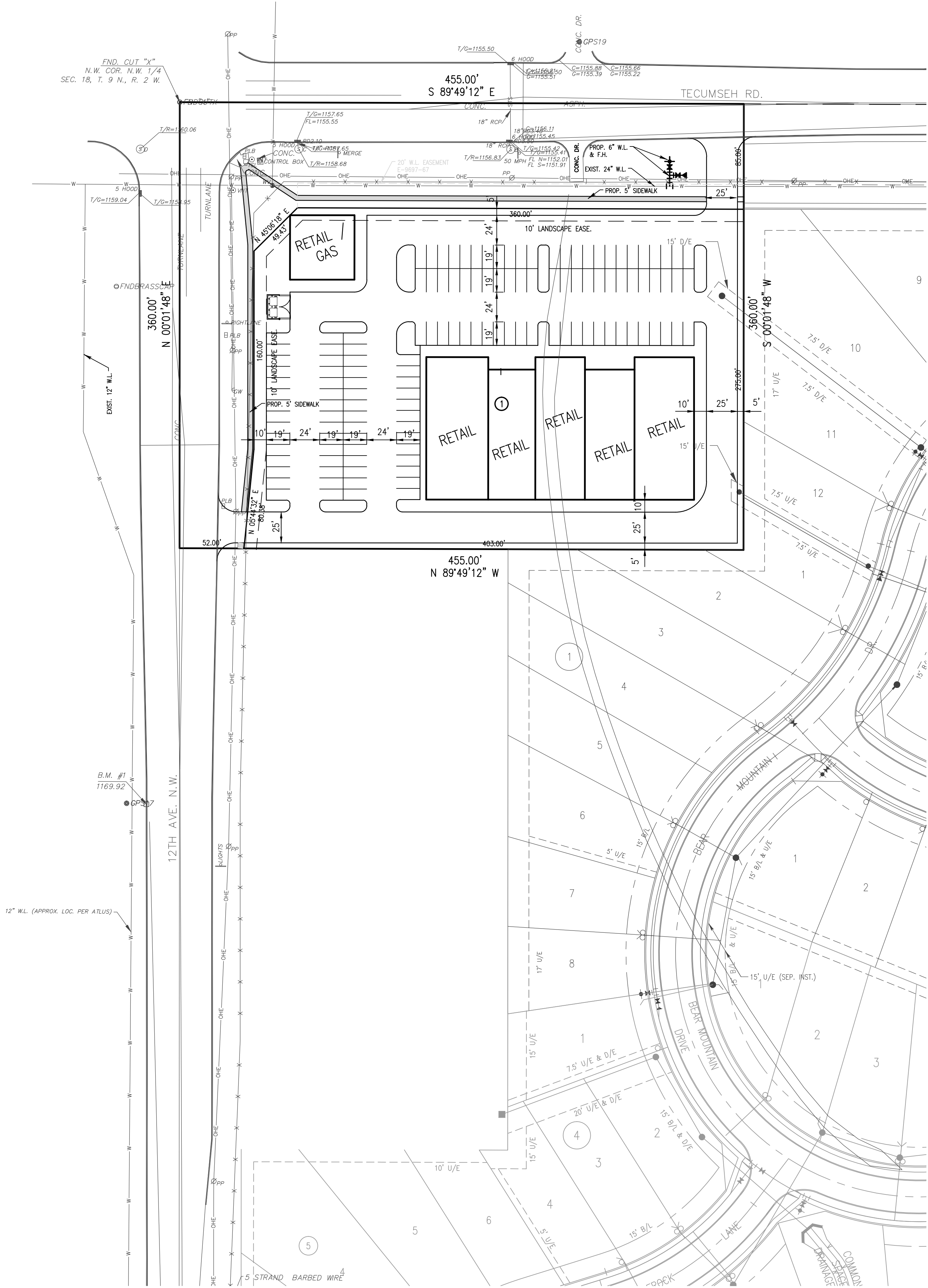
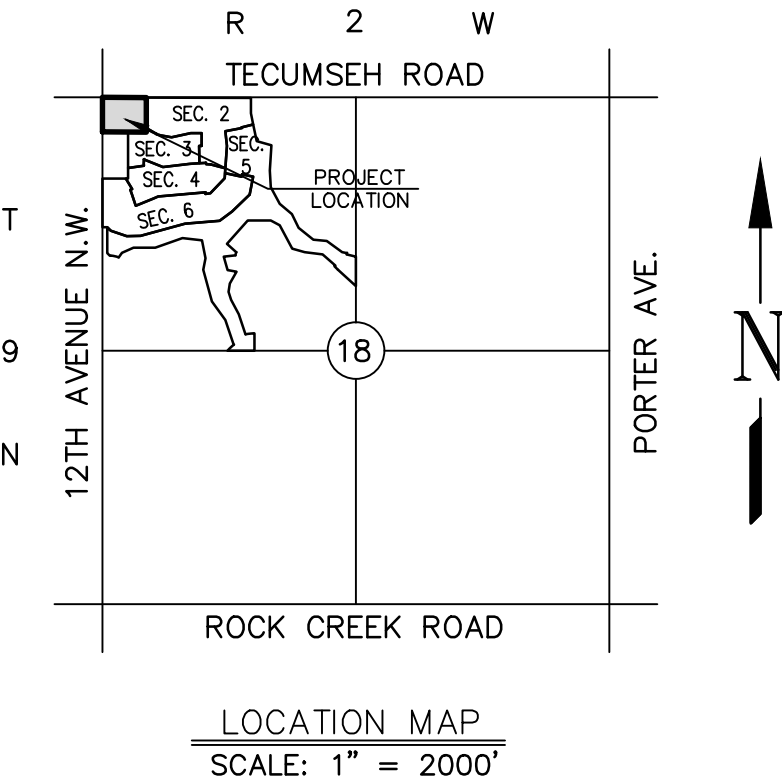


FINAL SITE DEVELOPMENT PLAN
GREENLEAF TRAILS ADDITION SECTION 7
A PLANNED UNIT DEVELOPMENT

THE N.W. 1/4, SECTION 18, T9N, R2W, I.M.
NORMAN, CLEVELAND COUNTY, OKLAHOMA



© SMC CONSULTING ENGINEERS, P.C. ALL RIGHTS RESERVED THESE DOCUMENTS MAY NOT BE USED FOR ANY PURPOSES WITHOUT PRIOR WRITTEN PERMISSION FROM SMC CONSULTING ENGINEERS, P.C.

OWNER/DEVELOPER
RIEGER, L.L.C.
136 THOMPSON DRIVE
NORMAN, OK 73072
(405) 329-6070

GREENLEAF TRAILS ADDITION SECTION 7
A PLANNED UNIT DEVELOPMENT

TECUMSEH RD. & 12th AVE. N.W.
NORMAN, OKLAHOMA

SMC
Consulting Engineers, P.C.
1100 S. W. 10th Ave., Suite 100
Norman, Oklahoma 73069
PH: 405-232-7715 Fax: 405-232-7559
Website: www.smccok.com
OKLAHOMA CERTIFICATE OF AUTHORIZATION NO. 464 EXP. 06/29/2015

PROJECT NO.: 4693.07
DATE: 12/09/13
SCALE: 1" = 50'
DRAWN BY: D.G.
ENGINEER: CHRISTOPHER D. ANDERSON
P.E. NUMBER: 13418

FINAL SITE
DEVELOPMENT PLAN

SHEET NO.
1