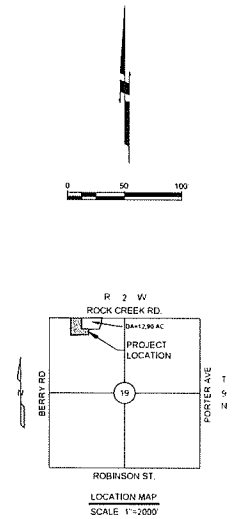
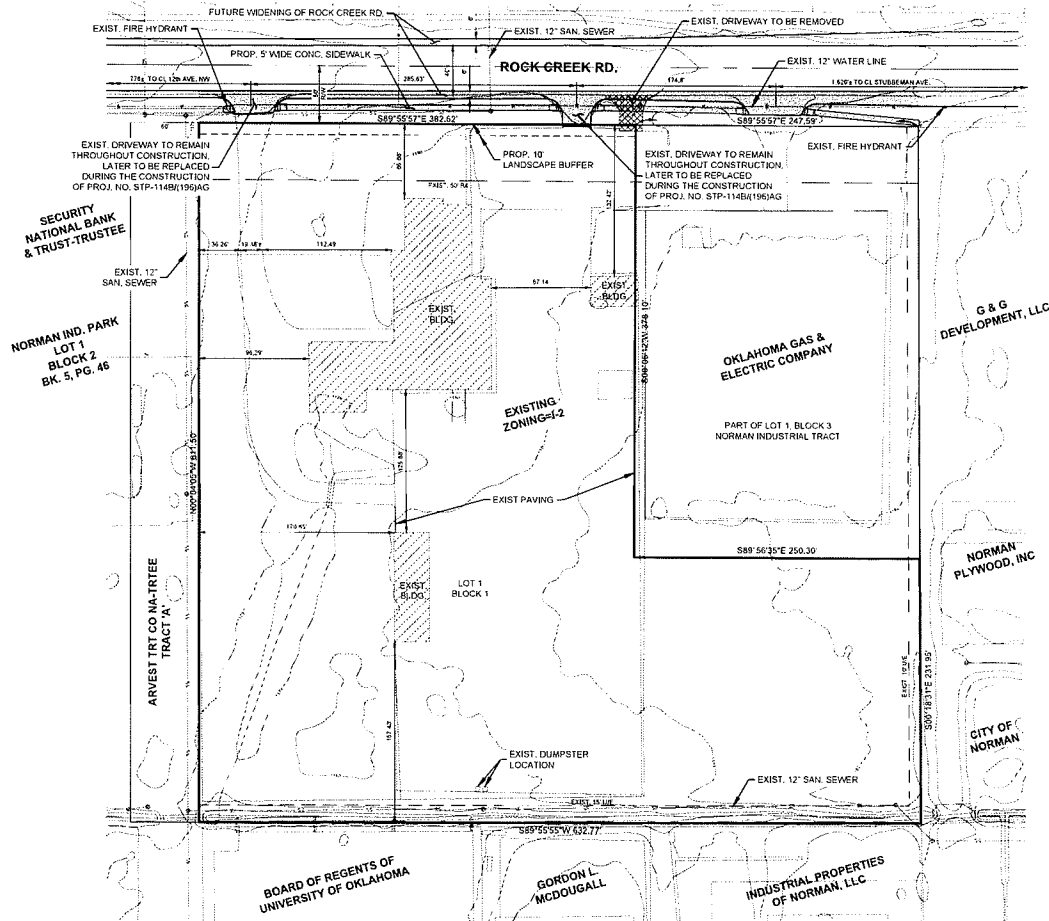
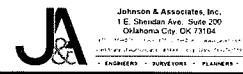


PRELIMINARY SITE PLAN  
of  
**NORMAN INDUSTRIAL TRACT-PHASE 2**

BEING A PARTIAL REPLAT OF LOT 1, BLOCK 3 OF NORMAN INDUSTRIAL TRACT  
BEING A PART OF THE NW/4, SEC. 19, T9N, R2W, I.M.  
AN ADDITION TO THE CITY OF NORMAN, CLEVELAND COUNTY, OKLAHOMA  
~ 1000 W. ROCK CREEK ROAD ~



PRELIMINARY SITE PLAN  
of  
**NORMAN INDUSTRIAL TRACT-PHASE 2**  
~ 1000 W. ROCK CREEK ROAD ~  
PRELIMINARY SITE PLAN PREPARED 11-12-17



Johnson & Associates, Inc.  
11 E. Sheridan Ave., Suite 200  
Oklahoma City, OK 73104  
(405) 233-1111  
www.jaok.com  
ENGINEERS • SURVEYORS • PLANNERS

ALL DIMENSIONS UNLESS OTHERWISE SPECIFIED ARE IN FEET AND INCHES.