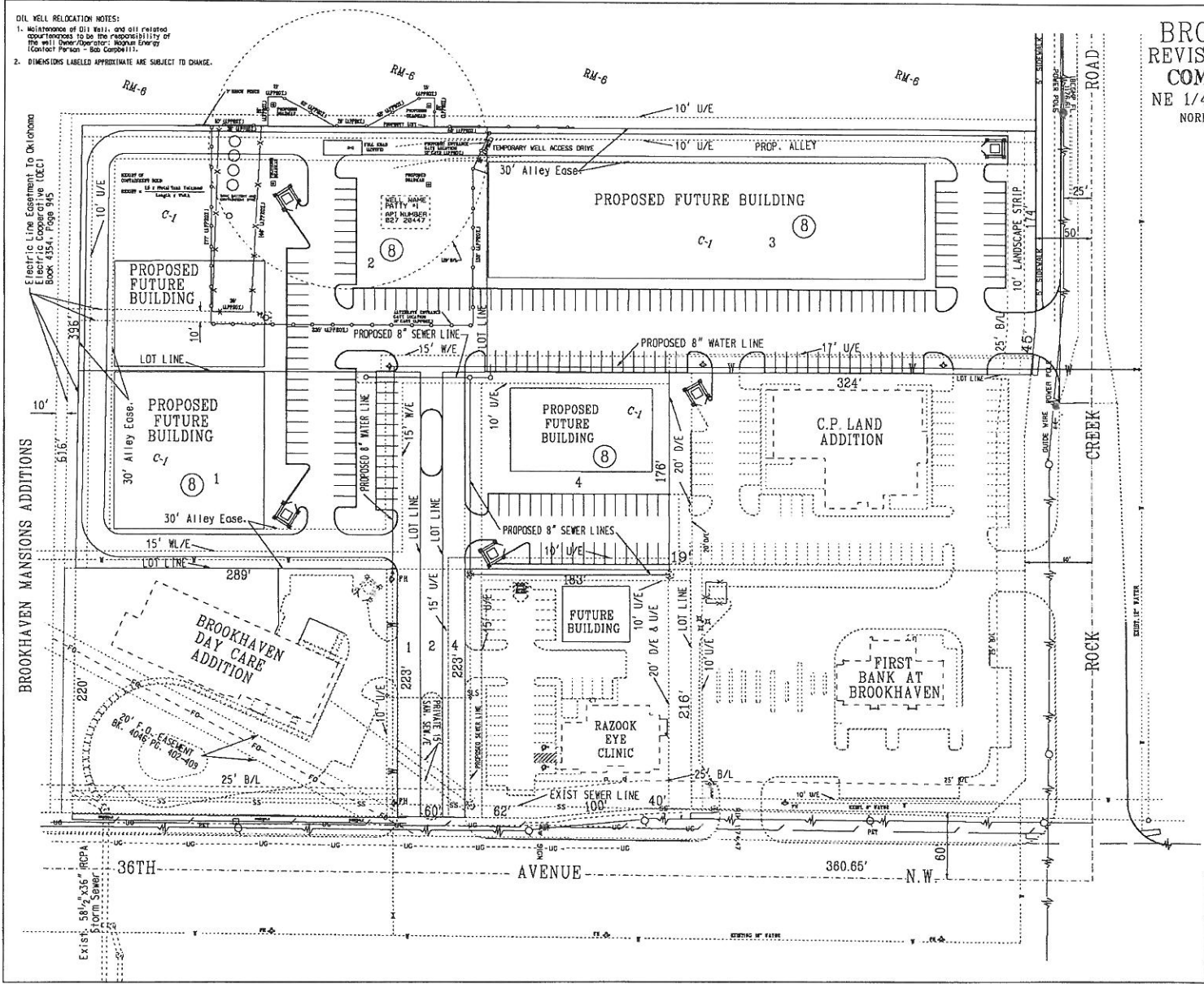


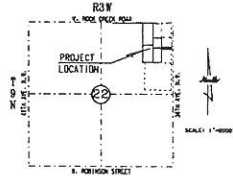
- OIL WELL RELOCATION NOTES:**
1. Maintenance of oil well, and all related responsibilities to be the responsibility of the well owner/operator: **Wagon Energy** (Contact Person - Bob Campbell).
 2. DIMENSIONS LABELED APPROXIMATE ARE SUBJECT TO CHANGE.

Electric Line Easement To Oklahoma Electric Cooperative (OEC) Book 4354, Page 945

BROOKHAVEN MANSIONS ADDITIONS



**BROOKHAVEN No.41
REVISED PRELIMINARY PLAT
COMMERCIAL SITE PLAN
NE 1/4, SECTION 22, T9N, R3W, I.M.
NORMAN, CLEVELAND COUNTY, OKLAHOMA**



VICINITY MAP

Scale: 1" = 40'

ENGINEERS SURVEYORS PLANNERS	CPES Clout Planning & Engineering Services
1400 W. 10th St., Norman, OK 73061 - 405-833-0332 - FAX: 405-833-0333 - E-MAIL: CPES@CPES.COM	
BROOKHAVEN NO. 41 ADDITION REVISED PRELIMINARY PLAT COMMERCIAL SITE PLAN	
Drawn By: [Name]	Job No. P029
Checked By: [Name]	Sheet 2 of 3
Date: 05-20-2024	