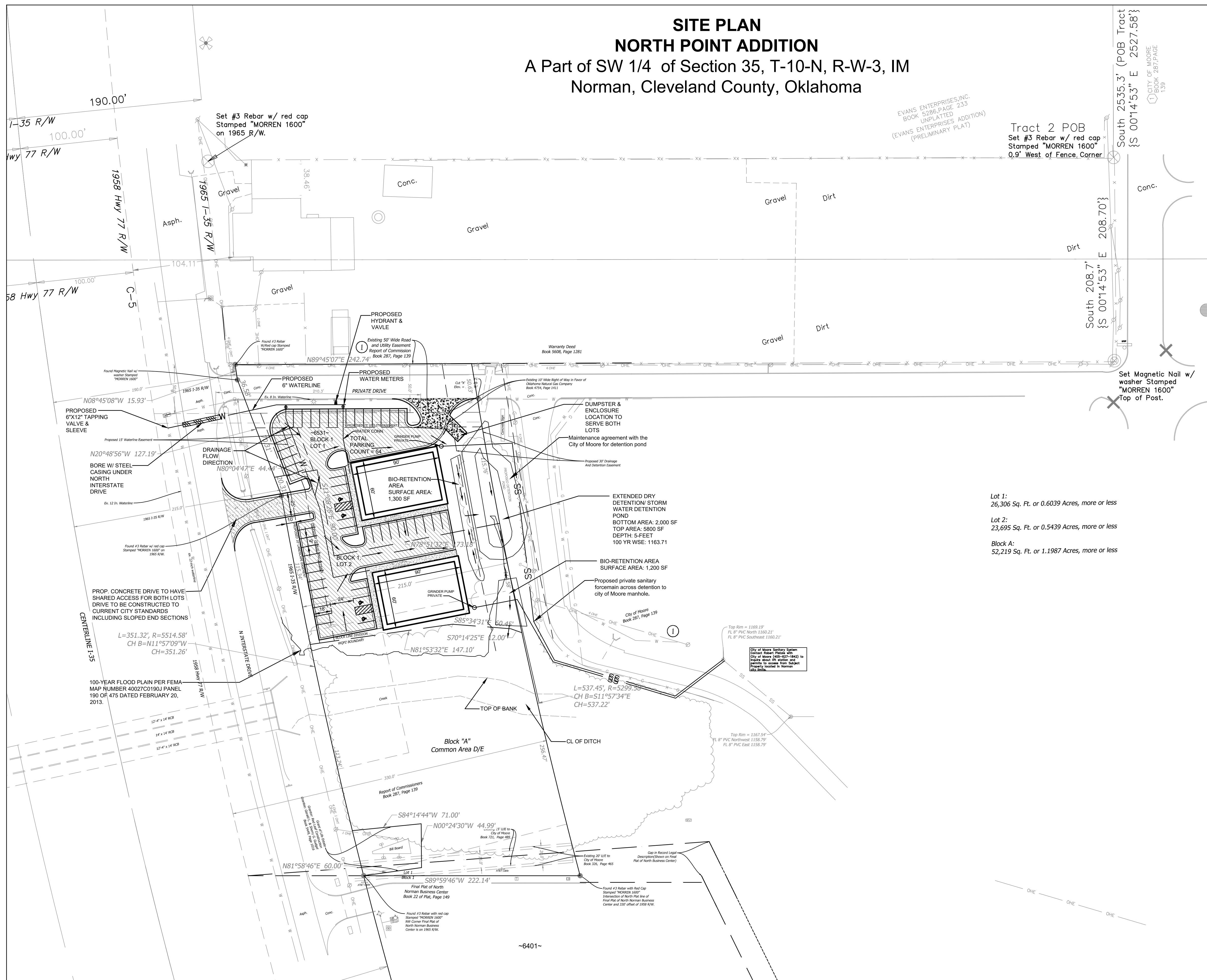


**SITE PLAN**  
**NORTH POINT ADDITION**  
 A Part of SW 1/4 of Section 35, T-10-N, R-W-3, IM  
 Norman, Cleveland County, Oklahoma



D  
C  
B  
A

EVANS ENTERPRISES, INC.  
 BOOK 5286 PAGE 233  
 UNPLATTED  
 (EVANS ENTERPRISES ADDITION)  
 (PRELIMINARY PLAT)

Tract 2 POB  
 Set #3 Rebar w/ red cap  
 Stamped "MORREN 1600"  
 0.9' West of Fence Corner

South 2535.3' (POB Tract  
 {S 0014'53" E 2527.58'  
 {S 0014'53" E 208.70'  
 {S 0014'53" E 208.70'  
 CITY OF MOORE  
 BOOK 287 PAGE  
 139

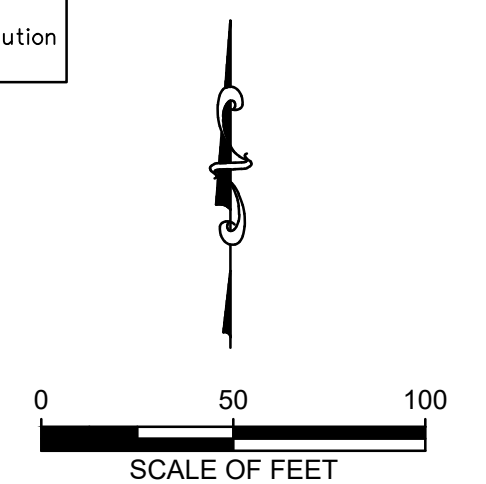
Set Magnetic Nail w/  
 washer Stamped  
 "MORREN 1600"  
 Top of Post.

Lot 1:  
 26,306 Sq. Ft. or 0.6039 Acres, more or less

Lot 2:  
 23,695 Sq. Ft. or 0.5439 Acres, more or less

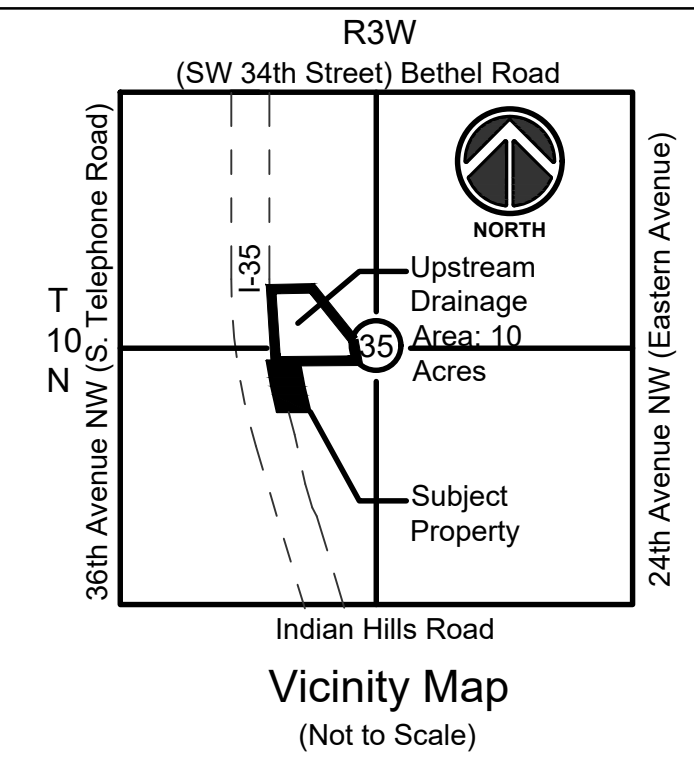
Block A:  
 52,219 Sq. Ft. or 1.1987 Acres, more or less

BM #1  
 Cut "X" on curb  
 Elevation = 1169.31'  
 Established using OPUS Solution  
 NAVD 1988 datum



**NOTES:**

1. ALL UNDERGROUND UTILITIES SHOWN WERE LOCATED FROM INFORMATION OBTAINED FROM THE SURVEY/OWNER. NO EXCAVATION WAS PERFORMED TO DETERMINE THE SIZE OR LOCATION. NOT NECESSARILY ALL UNDERGROUND UTILITIES ARE SHOWN AND THOSE SHOWN ARE IN APPROXIMATE LOCATION ONLY. IT SHALL BE THE RESPONSIBILITY OF THE CONTRACTOR TO VERIFY ALL UNDERGROUND UTILITIES AND THE LOCATION THEREOF PRIOR TO BEGINNING CONSTRUCTION. NO RESPONSIBILITY IS HEREBY EXTENDED FOR LOCATION OF UNDERGROUND UTILITIES.



Nafa Engineering, PLLC  
 4108 NW 143rd Street  
 Oklahoma City, OK 73134  
 Phone: 405.420.0016  
 Email: Nafaima@nafaeng.com  
 CA # 6740 exp. 06/30/2021

NO.	REVISION PER CITY COMMENTS	DATE
1	REVISION PER CITY COMMENTS	11/06/19
2	REVISION PER CITY COMMENTS	10/20/19
3	REVISION PER CITY COMMENTS	11/06/19
4	REVISION PER CITY COMMENTS	11/06/19
5	REVISION PER CITY COMMENTS	11/06/19
6	REVISION PER CITY COMMENTS	11/06/19
7	REVISION PER CITY COMMENTS	11/06/19
8	REVISION PER CITY COMMENTS	11/06/19
9	REVISION PER CITY COMMENTS	11/06/19
10	REVISION PER CITY COMMENTS	11/06/19

DESIGN BY:	RF
CHECKED BY:	RF
DATE:	MAY 29, 2019
JOB #:	18-0015

Prepared for:  
 Red Leaf Construction  
 1551 36th Avenue NW  
 Norman, OK-73072



North Point Addition  
 6501 N. Interstate Drive  
 Norman, OK-73069

**SITE PLAN**

SHEET NUMBER  
**C-102**

ALL WORK SHALL BE DONE IN ACCORDANCE WITH THE CITY OF NORMAN ENGINEERING DESIGN CRITERIA STANDARD SPECIFICATIONS.