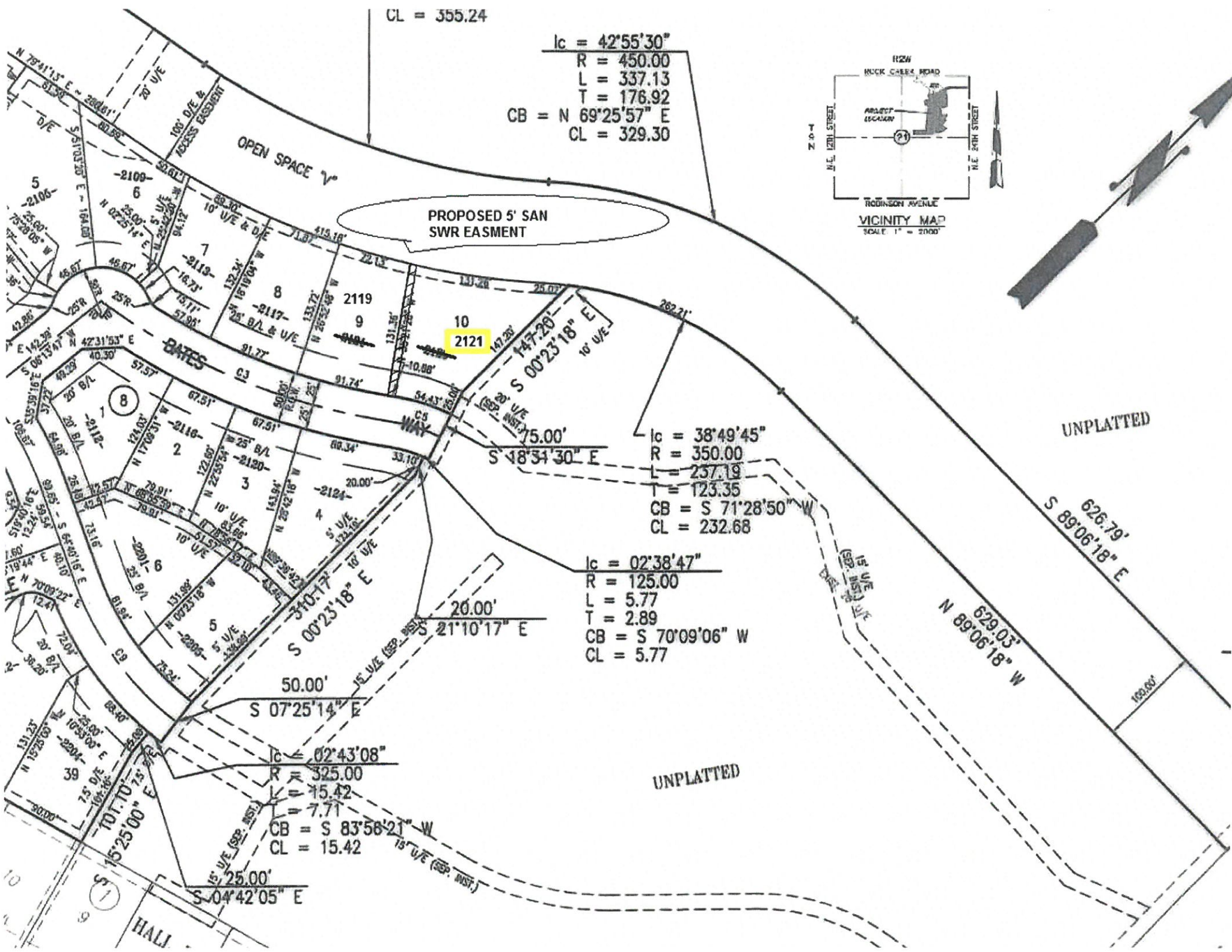
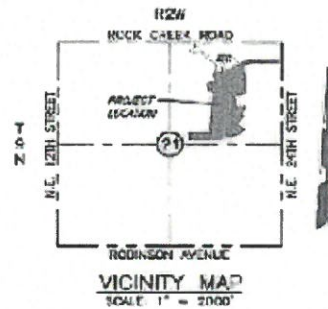


CL = 355.24

lc = 42°55'30"
R = 450.00
L = 337.13
T = 176.92
CB = N 69°25'57" E
CL = 329.30



PROPOSED 5' SAN SWR EASMENT

10
2121

lc = 38°49'45"
R = 350.00
L = 257.19
T = 123.35
CB = S 71°28'50" W
CL = 232.68

lc = 02°38'47"
R = 125.00
L = 5.77
T = 2.89
CB = S 70°09'06" W
CL = 5.77

lc = 02°43'08"
R = 325.00
L = 15.42
T = 7.71
CB = S 83°58'21" W
CL = 15.42

UNPLATTED

UNPLATTED

10
9
1
2
3
4
5
6
7
8
9
10
11
12
13
14
15
16
17
18
19
20
21
22
23
24
25
26
27
28
29
30
31
32
33
34
35
36
37
38
39
40
41
42
43
44
45
46
47
48
49
50
51
52
53
54
55
56
57
58
59
60
61
62
63
64
65
66
67
68
69
70
71
72
73
74
75
76
77
78
79
80
81
82
83
84
85
86
87
88
89
90
91
92
93
94
95
96
97
98
99
100