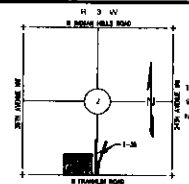


FINAL SITE DEVELOPMENT PLAN
BATTISON AUTOMOTIVE
 A PLANNED UNIT DEVELOPMENT
 NORMAN, CLEVELAND COUNTY, OKLAHOMA

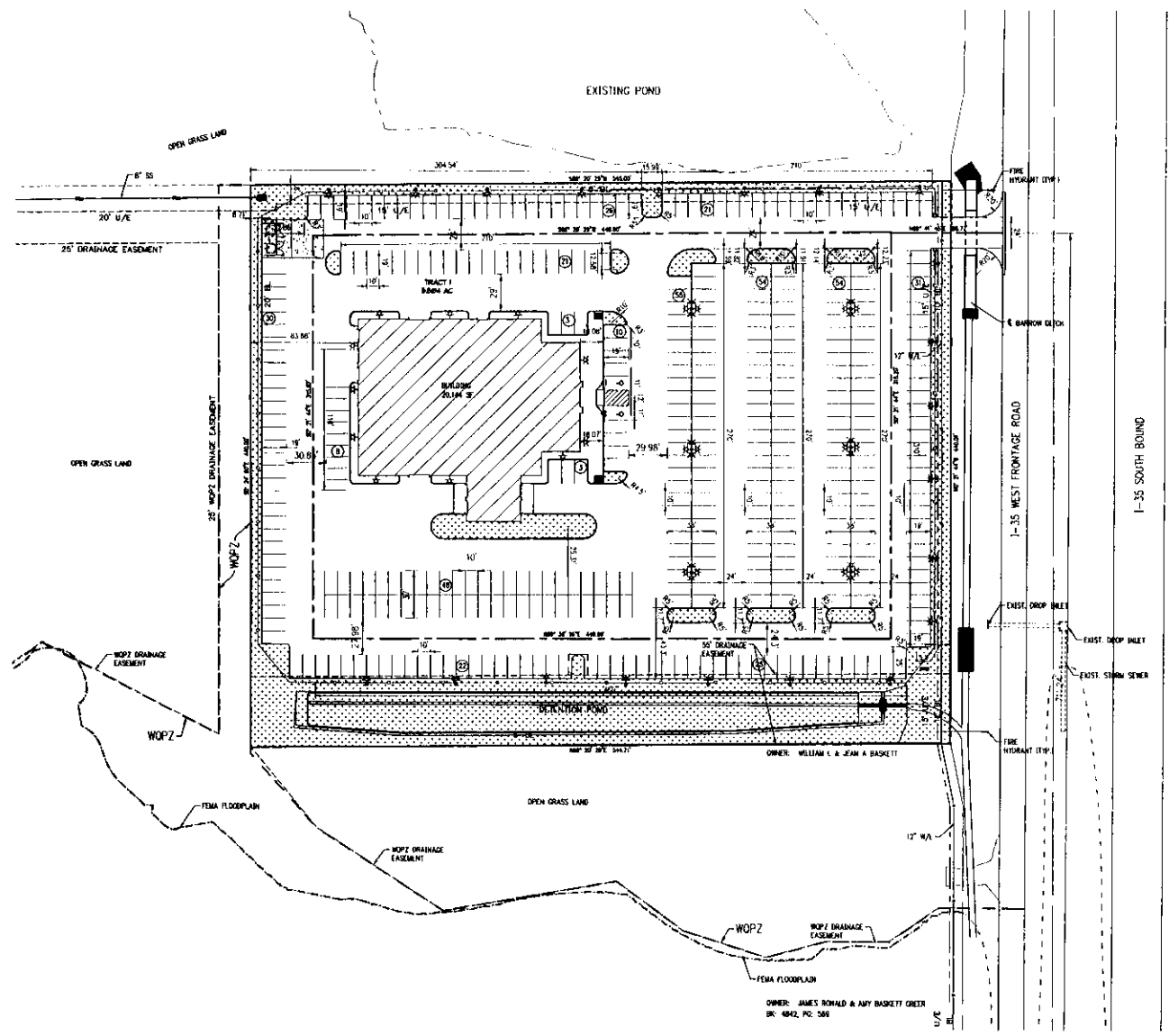
PARKING REQUIREMENTS:

ZONING: PUD
 USE: COMMERCIAL
 ACREAGE: 0.0 AC
 BUILDING SQ. FT.: 20,144 SF
 SHOWROOM/OFFICE: 8,875 SF
 SERVICE: 11,270 SF
 OUTSIDE LOT: 106,550 SF
 PARKING REQUIREMENTS: 57 PLACES



LOCATION MAP
 SCALE: 1" = 2000'

PROJECT DEVELOPER
 BATTISON PROPERTIES, LLC
 4313 HADGLEY WOOD ROAD
 NORMAN, OK 73072
 PH. 560-487-0313



1564. 36 W/100'PA
 A part of an 1/4 section within a portion of the Southeast Quarter (SW 1/4) of Section Two (2), Township 10 North (10N) Range 10 West (10W) of the Indian Meridian (1818) in Norman, Cleveland County, Oklahoma, being more particularly described as follows:
 COMMENCEMENT at the Southwest corner of said SW 1/4, and thence by a 1/4" iron nail in place (herein R-007 3), 36' W along the West line of said SW 1/4 along the base of topography for this description a distance of 112.98 feet, thence
 R-007 24 82' a distance of 58.062 feet to the POINT OF BEGINNING, thence
 R-007 24 02' W a distance of 840.00 feet to a point on the South line of 1/4 section (2) and Thence (2) as described in this plat to a point on the West line of said SW 1/4, and thence by a 1/4" iron nail in place (herein R-007 3), 36' W along the West line of said SW 1/4 along the base of topography for this description a distance of 112.98 feet, thence
 R-007 20 20' E a distance of 141.00 feet to point on the West line (W 1/4) of Section Two (2) Township 10 North (10N) Range 10 West (10W) of the Indian Meridian (1818) of 1/4 section (2) and thence being more particularly described as follows:
 The following description:
 1. 1507 21 41' a distance of 448.55 feet, thence
 2. 1515 07 44' a distance of 1.48 feet, thence
 3. R-007 20 20' E a distance of 141.00 feet to the POINT OF BEGINNING.
 See tract contains 2.947876 by 114.5504 Acres, more or less.



SITE PLAN TO SERVE
 BATTISON CAR DEALERSHIP

Crafton Tull
 CIVIL ENGINEERS, ARCHITECTS, PLANNERS
 4000 N. MAYA AVE., SUITE 100
 OKLAHOMA CITY, OKLAHOMA 73105
 TEL: 405-521-4670
 FAX: 405-521-4671

SHEET NO.: 2 of 2
 DATE: 05/17/2021
 PROJECT NO.: 20600200