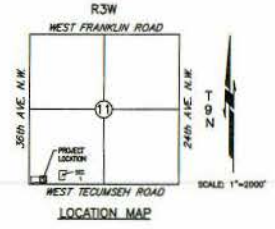
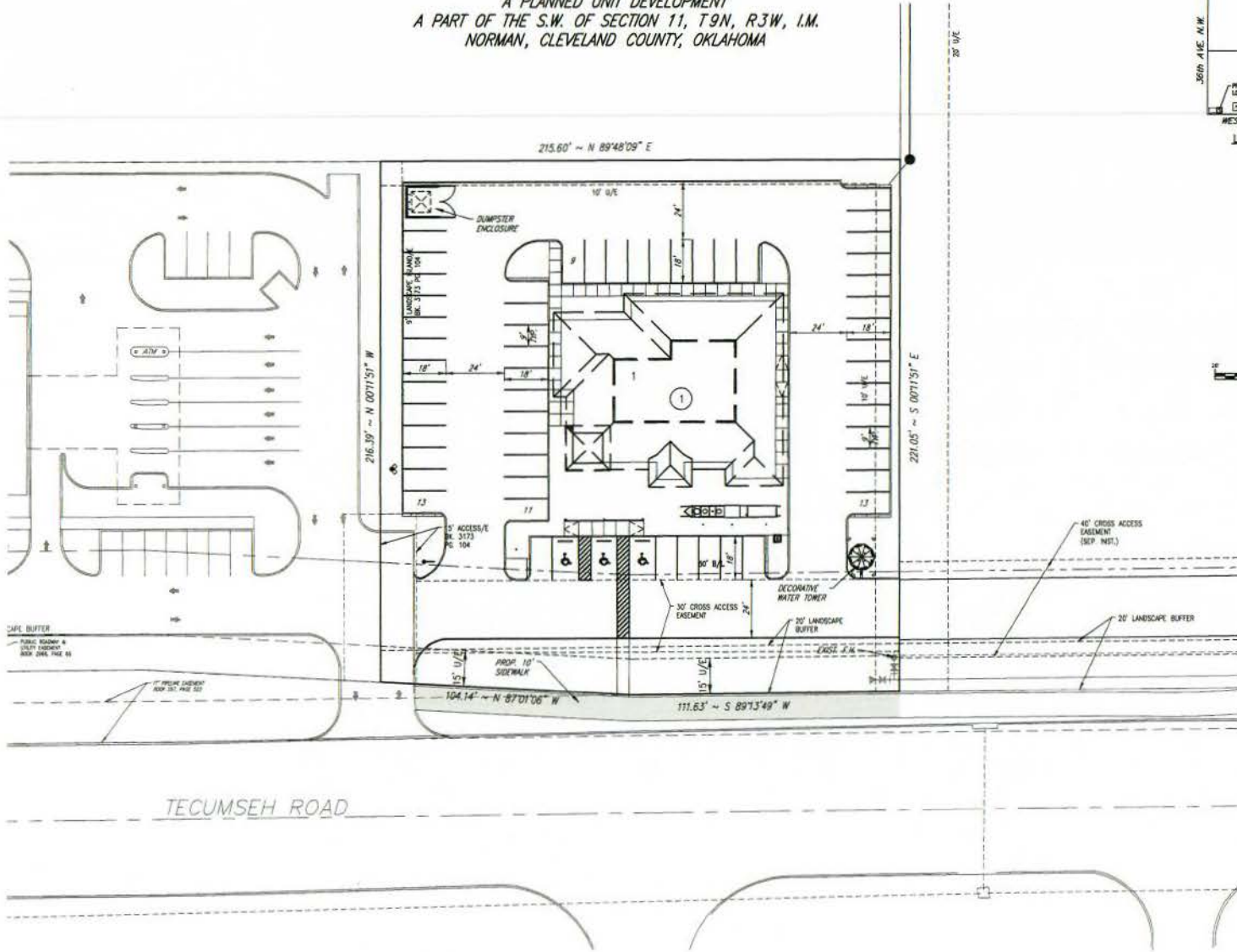


**FINAL SITE DEVELOPMENT PLAN**  
**CARROLL FARM ADDITION SECTION 2**  
 A PLANNED UNIT DEVELOPMENT  
 A PART OF THE S.W. OF SECTION 11, T9N, R3W, I.M.  
 NORMAN, CLEVELAND COUNTY, OKLAHOMA



© SMC CONSULTING ENGINEERS, P.C. ALL RIGHTS RESERVED. THESE DOCUMENTS MAY NOT BE USED FOR ANY PURPOSES WITHOUT PRIOR WRITTEN PERMISSION FROM SMC CONSULTING ENGINEERS, P.C.

**CARROLL FARM ADDITION SECTION 2**  
**TECUMSEH RD. & 36th AVE. N.W.**  
**NORMAN, OKLAHOMA**

**SMC**  
 SMC Consulting Engineers, P.C.  
 1000 N. Lincoln Blvd., Suite 100  
 Norman, Oklahoma 73069  
 (405) 833-1111  
 www.smccoe.com

PROJECT NO.: 08040  
 DATE: 1/10/11  
 SCALE: 1"=20'  
 DRAWN BY: S.C.  
 CHECKED BY: S.C.  
 P.L. NUMBER:

Final Site Development Plan  
 SHEET NO. 1