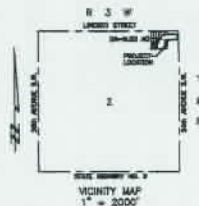


PRELIMINARY PLAT
OF
SOONER LEGENDS
A REPLAT OF DICKERSON NO. 1 ADDITION
A PART OF THE NE/4 OF SEC 2, T-8-N, R-3-W, I.M.
NORMAN, CLEVELAND COUNTY, OKLAHOMA



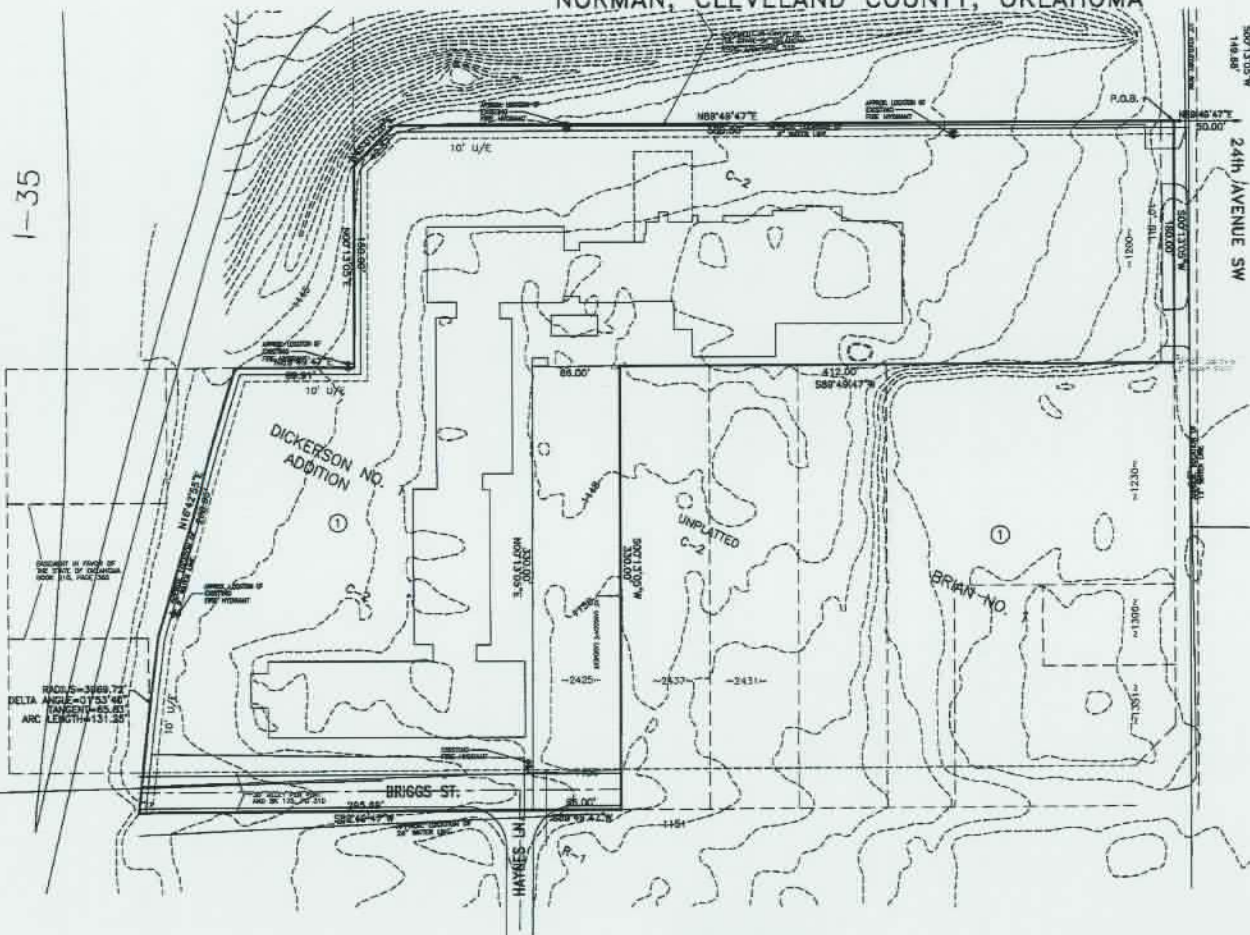
DEVELOPER
SOONER LEGENDS, LLC
1800 24th AVENUE SW
NORMAN, OK 73072
PHONE: (405) 326-5432
KENNETH D. KEHNON

SCALE: 1" = 40'

LEGAL DESCRIPTION:

A TRACT OF LAND LYING IN THE NORTHEAST QUARTER (NE/4) OF SECTION TWO (2), TOWNSHIP EIGHT (8) NORTH, RANGE THREE (3) WEST OF THE INDIAN MERIDIAN, CLEVELAND COUNTY, OKLAHOMA, BEING MORE PARTICULARLY DESCRIBED AS FOLLOWS:

COMMENCING AT THE NORTHEAST CORNER OF SAID SECTION TWO (2); THENCE S00°13'05"W A DISTANCE OF 149.58 FEET; THENCE N89°48'47"E A DISTANCE OF 50.00 FEET TO THE POINT OF BEGINNING, THENCE FROM SAID POINT OF BEGINNING S00°13'05"W A DISTANCE OF 190.00 FEET; THENCE S89°48'47"W A DISTANCE OF 412.00 FEET; THENCE S00°13'05"W A DISTANCE OF 330.00 FEET; THENCE S89°48'47"W A DISTANCE OF 86.60 FEET; THENCE CONTINUING S89°48'47"W A DISTANCE OF 355.88 FEET TO A POINT ON A CURVE TO THE RIGHT, SAID CURVE HAVING A RADIUS OF 3966.72 FEET, A DELTA ANGLE OF 01°53'40", A CHORD BEARING OF N02°34'24"E, AND A CHORD DISTANCE OF 131.25 FEET; THENCE ALONG SAID CURVE AN ARC DISTANCE OF 131.25 FEET; THENCE N18°42'55"E A DISTANCE OF 208.55 FEET; THENCE N89°48'47"E A DISTANCE OF 88.81 FEET; THENCE N00°13'05"E A DISTANCE OF 150.00 FEET; THENCE N45°01'28"E A DISTANCE OF 42.57 FEET; THENCE N89°48'47"E A DISTANCE OF 560.00 FEET TO THE POINT OF BEGINNING, EXCEPT A STRIP OF LAND 30 FEET IN WIDTH ALONG THE SOUTH SIDE OF THE ABOVE DESCRIBED TRACT TO BE USED FOR ROAD EASEMENT AND PUBLIC UTILITIES USAGE, SAID TRACT CONTAINING 3.03 ACRES, MORE OR LESS, AND SUBJECT TO ANY EASEMENTS OR RIGHTS-OF-WAY OF RECORD.



1-35

RADIUS=3966.72
DELTA ANGLE=01°53'40"
CHORD=131.25
ARC LENGTH=131.25

THIS PLAT IS DESIGNED IN ACCORDANCE WITH THE CITY OF NORMAN ORDINANCES AND REGULATIONS GOVERNING THE SUBDIVISION OF LAND.

LEGEND
1/2" UTILITY EASEMENT

SURVEY BY:
SMITH ROBERTS BALDISCHWILER, L.L.C.
DARRI BAUSGORN, P.L.S.
OK 2004 0311 14-01-12
100 NE 6th STREET
OKLAHOMA CITY, OKLAHOMA 73104
405-460-7000

DATE 08-27-13	PRELIMINARY PLAT
SCALE 1" = 40'	SOONER LEGENDS
JOB NUMBER KEN130444	NORMAN, OK
DRAWN BY S.D.B.	ANCHOR ENGINEERING, L.L.C.
APPROVED BY D.H.B.	Specializing in Subdivisions
SHEET 1 OF 1	10004 Quail Point Dr. (405) 748-2848 Suite 202 (405) 748-8887 fax Norman, Ok. 73130