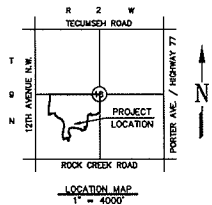
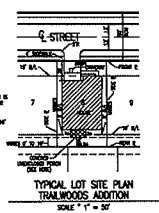
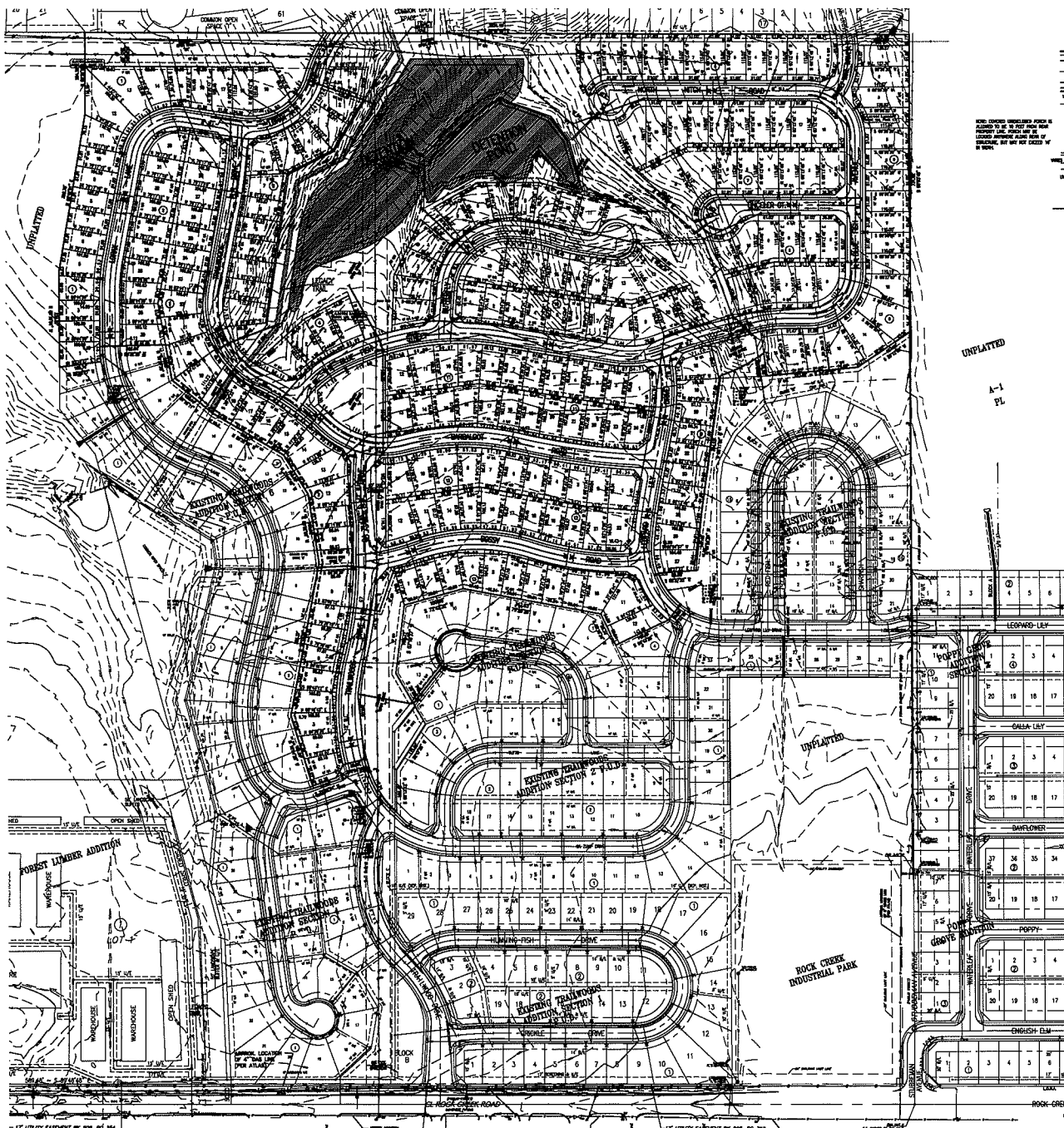


**PRELIMINARY PLAT**  
**TRAILWOODS ADDITION**  
 A PLANNED UNIT DEVELOPMENT  
 A PART OF THE S.W. 1/4, SECTION 18, T9N, R2W, I.M.  
 NORMAN, CLEVELAND COUNTY, OKLAHOMA



- NOTES:**
1. EXISTING DRAINAGE.
  2. ALL PUBLIC UTILITIES SHALL BE DESIGNED IN ACCORDANCE WITH THE CITY OF NORMAN STANDARDS.
  3. ALL STREETS SHALL BE DESIGNED IN ACCORDANCE WITH THE CITY OF NORMAN STANDARDS.
  4. ALL PUBLIC UTILITIES SHALL BE IN DESIGNATED EXPOSURES.
  5. ALL SHARED DRIVE LINES TO BE 10' UNLESS NOTED OTHERWISE.
  6. WATER LINES TO BE 10' UNLESS NOTED OTHERWISE. WATER LINE SIZES MAY NEED TO BE INCREASED BASED ON FLOWING OF PROJECT.
  7. FIRE HYDRANTS TO BE SPACED A MAXIMUM OF 300' APART.
  8. ALL DRIVEWAYS AND DRIVEWAYS WITHIN STREET RIGHTS-OF-WAY AND ALL COMMON AREAS WITHIN THIS DEVELOPMENT SHALL BE CONCRETE FINISH.
  9. THE DEVELOPER WILL CONDUCT LIGHT TREAT THROUGH HIS PROPERTY AND SECURE IT TO THE CITY OF NORMAN IN A 10' WIDE PEDESTRIAN EXPOSURE.
  10. REFER TO DRAINAGE REPORT FOR DRAINAGE INFORMATION.

**Local Description**

A tract of land lying in the Southeast Quarter (SW/4) of Section 18, Township 9 North (T9N), Range 2 West (R2W), of the Indian Meridian, Norman, Cleveland County, Oklahoma, and being more particularly described as follows:

COMMENCED at the S.E. corner of said SW/4 of Section 18; THENCE North 07°57'40" East along the East line of said SW/4 a distance of 195.08 feet to the POINT OF BEGINNING;

THENCE South 89°12'00" West a distance of 157.89 feet; THENCE South 84°46'30" West a distance of 223.82 feet; THENCE North 07°46'40" East a distance of 58.88 feet to a point on a non-tangent curve; THENCE around a curve to the right having a radius of 200.00 feet (said curve subtended by a chord which bears South 82°47'40" West a distance of 118.20 feet) and on a straight line South 01°11'00" West a distance of 334.83 feet; THENCE South 07°14'50" West a distance of 174.40 feet; THENCE South 88°27'20" West a distance of 85.55 feet; THENCE around a curve to the left having a radius of 175.00 feet (said curve subtended by a chord which bears South 32°27'00" East, a distance of 94.22 feet) and on a straight line South 07°14'50" West a distance of 50.00 feet; THENCE South 89°12'00" West a distance of 143.40 feet; THENCE North 22°15'00" West a distance of 183.54 feet; THENCE South 72°42'00" West a distance of 343.85 feet; THENCE South 72°42'00" West a distance of 133.89 feet; THENCE South 07°46'40" East a distance of 133.83 feet; THENCE South 07°14'50" East a distance of 112.48 feet; THENCE around a curve to the right having a radius of 200.00 feet (said curve subtended by a chord which bears North 33°04'10" West, a distance of 118.82 feet) and on a straight line North 15°42'00" West a distance of 157.89 feet; THENCE South 84°46'30" West a distance of 223.82 feet; THENCE South 89°12'00" West a distance of 80.00 feet; THENCE South 22°15'00" West a distance of 36.11 feet; THENCE South 71°07'54" West a distance of 81.26 feet; THENCE North 18°24'30" West a distance of 151.81 feet; THENCE North 15°42'00" East a distance of 263.07 feet; THENCE North 02°02'00" East a distance of 178.68 feet; THENCE North 31°46'48" West a distance of 113.89 feet; THENCE North 59°23'30" West a distance of 202.87 feet; THENCE North 51°15'11" West a distance of 102.44 feet; THENCE North 18°24'30" West a distance of 178.68 feet; THENCE South 89°12'00" West a distance of 183.54 feet; THENCE around a curve to the left having a radius of 340.00 feet (said curve subtended by a chord which bears South 03°04'10" East, a distance of 38.87 feet) and on a straight line South 88°14'00" West a distance of 202.87 feet; THENCE North 02°02'00" East a distance of 102.44 feet; THENCE North 07°15'00" West a distance of 202.87 feet; THENCE South 07°46'40" East a distance of 388.78 feet; THENCE North 02°02'00" East a distance of 202.87 feet; THENCE South 89°12'00" East a distance of 203.19 feet to a point on the East line of said SW/4; THENCE South 07°46'40" East along the East line a distance of 731.02 feet to the POINT OF BEGINNING.

Said tract contains 2413,827 square feet or 55.402 acres more or less.

SCALE: 1"=100'

**STORM DRAINAGE DETENTION FACILITY EASEMENT**

DRAINAGE DETENTION FACILITY EASEMENTS ARE HEREBY ESTABLISHED AS SHOWN TO PROVIDE FOR DETENTION OF STORM SURFACE WATER AND CONSTRUCTED AS APPROVED BY THE CITY ENGINEER. ALL MAINTENANCE WITHIN THE EASEMENT IS THE RESPONSIBILITY OF THE PROPERTY OWNER. THE EASEMENT SHALL BE THE PROPERTY OF THE CITY OF NORMAN, OKLAHOMA, AND IS SUBJECT TO OTHER LEGAL ENCUMBRANCES AND IS DETERMINED TO BE A PAVED OR IMPROVED PUBLIC HIGHWAY BY THE CITY ENGINEER. THE EASEMENT SHALL BE MAINTAINED BY THE PROPERTY OWNER AT HIS OWN EXPENSE. THE CITY ENGINEER'S REPRESENTATIVE SHALL HAVE THE RIGHT TO ENTER UPON THE EASEMENT FOR PURPOSES OF PERFORMING INSPECTION AND/OR CONSTRUCTION MAINTENANCE OF THE FACILITY. UPON RECEIVING WRITTEN APPROVAL FROM THE ENGINEERING DIVISION, PUBLIC WORKS DEPARTMENT, PROPERTY OWNERS MAY CONCLUDE AGREEMENTS WITHIN THE EASEMENT, PROVIDED THE AGREEMENT DOES NOT INTERFERE WITH THE FUNCTION OF THE DETENTION FACILITY.

**LEGEND**

- SIGHT RESTRICTION/TRAFFIC LINE
- "NO PARKING" AREAS

**OWNER/DEVELOPER**  
 TERRA VERDE DEVELOPMENT, L.L.C.,  
 1320 NORTH PORTER  
 NORMAN, OK 73071  
 (405) 384-1152

**DESIGNED BY:**  
 SMC Consulting Engineers, P.C.  
 815 W. MAIN  
 OKLAHOMA CITY, OK 73106  
 (405) 232-7715

**55.402 ACRES**  
**232 LOTS**  
**4.21 LOTS PER ACRE**

PRELIMINARY PLAT	
TRAILWOODS ADDITION A PLANNED UNIT DEVELOPMENT	
ROCK CREEK Rd. & 12th AVE. N.W. NORMAN, OKLAHOMA	
SMC Consulting Engineers, P.C. 815 W. Main - Norman, Ok, 73106 PH: 405-232-7715 FAX: 405-232-7715 ADDRESS: 1000 W. MAIN ST., SUITE 100, OKLAHOMA CITY, OK 73106	
DATE: 08/11/2010	BY: [Signature]
SCALE: AS SHOWN	SCALE: 1" = 100'
DESIGNED BY: SMC	CHECKED BY: [Signature]
DATE: 08/11/2010	DATE: 08/11/2010
PROJECT: SMC-10-001	PROJECT: SMC-10-001
ENGINEER: TOM L. MACALEER, P.E. #13416	ENGINEER: TOM L. MACALEER, P.E. #13416
SHEET NO. 1 of 1	

