

Chick-fil-A

Attorney: Mason Schwartz

Partial removal a 50ft. Platted Front Building Line

2437 W. Main Street



Subject Tract

Porter Corridor Plan

Existing Zoning

Map produced by City of Norman GIS Division

Porter Corridor Plan

Approximate Easement Location



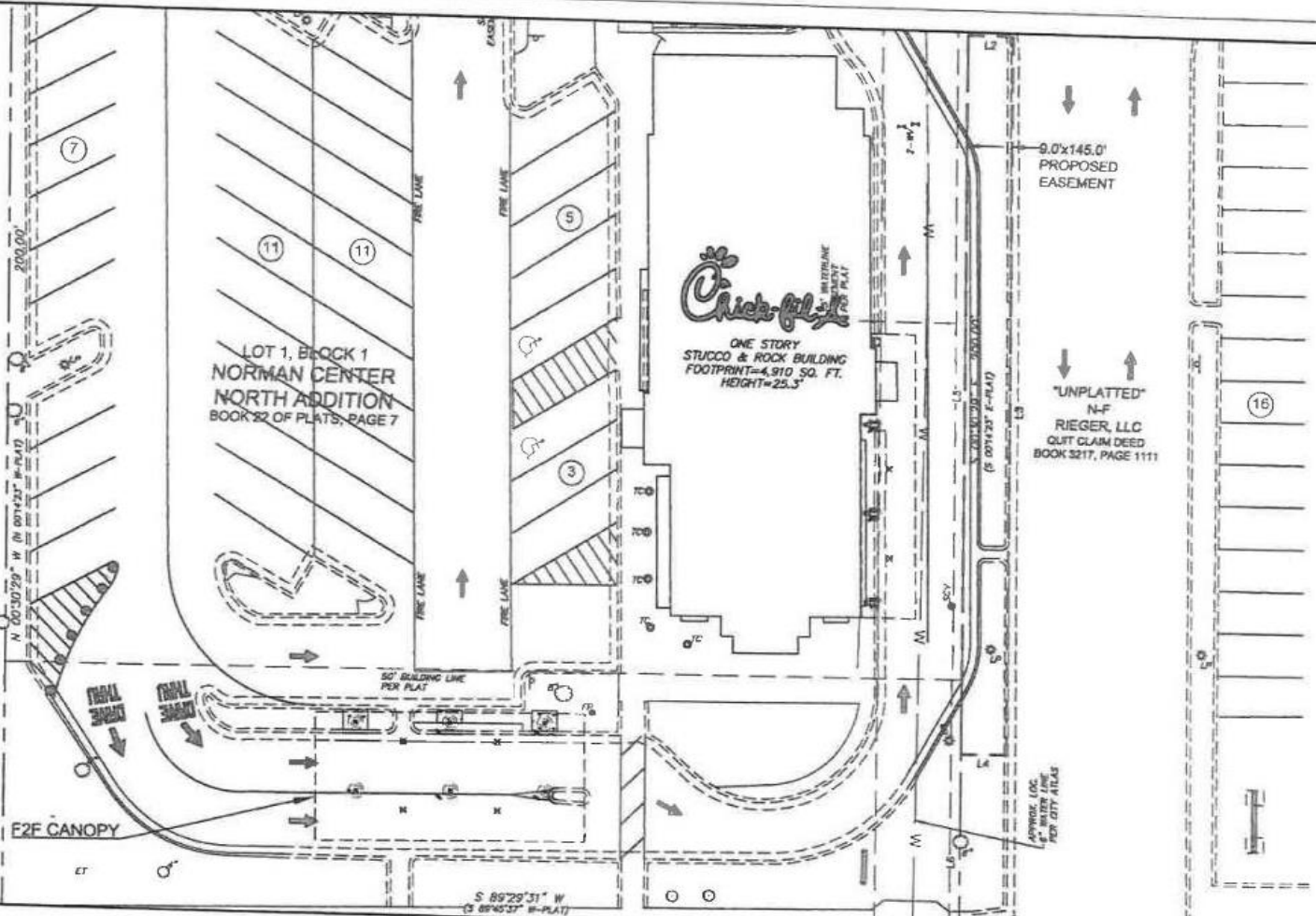
2019 Aerial Photography

Map produced by City of Norman GIS Division

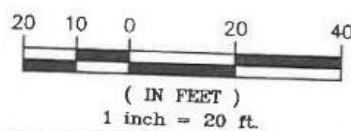




OF
ON
E 39



06/23/2019 - 5:26pm
E:\Projects\Special Projects\02133 Norman\Site\Site Plan\BASE-02153.dwg



PRELIMINARY CONCEPT
NOT FOR DESIGN

NORMAN FSU #02513
2437 WEST MAIN STREET
NORMAN, OK
SITE SKETCH 'B'

DATE: 10/22/19

ATKINS
Member of the SNC-Levin Group
1600 Riveridge Parkway NW, Suite 700
ATLANTA, GA 30328
(770) 933-0280 - fax (770) 933-0971

